

PORTLAND, OREGON

# HI-ILS or LOC RWY 10R

LOC/DME I-PDX <b>110.5</b> Chan <b>42</b>	APCH CRS <b>103°</b>	Rwy ldg <b>11,000</b> TDZE <b>24</b> Arprt Elev <b>31</b>
---	-------------------------	---

AL-330 [USAF]

PORTLAND INTL (KPDX)

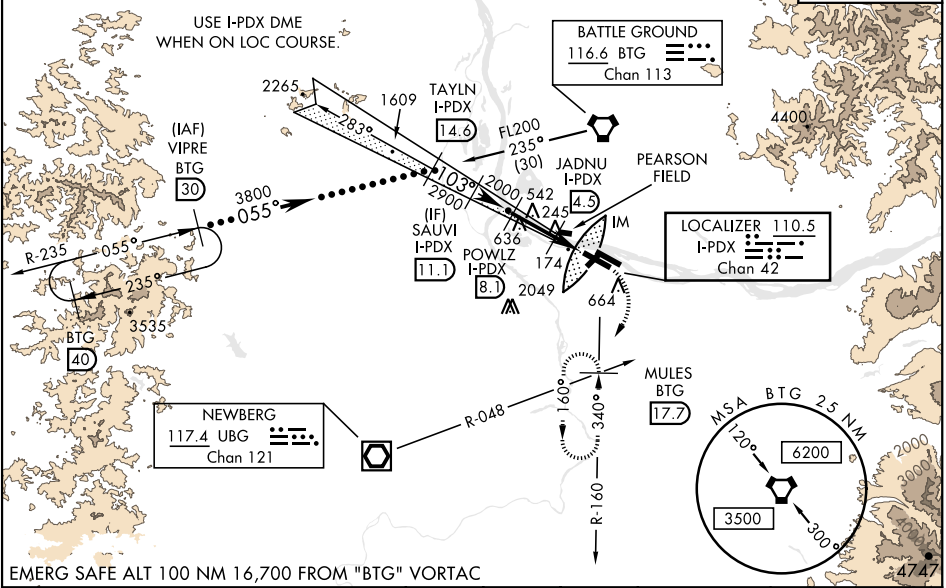
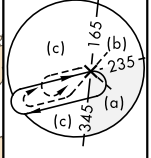
DME required.  
 \* When ALS inop, increase RVR to 40 and vis to 3/4 mile.



MISSED APPROACH: Climb to 1100 then climbing right turn to 5000 on BTG VORTAC R-160 to MULES/BTG 17.7 DME and hold, continue climb-in-hold to 5000.

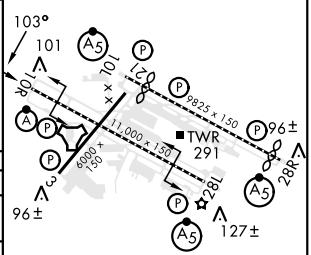
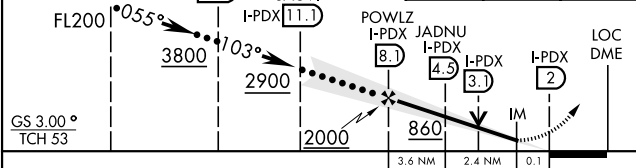
ATIS <b>128.35 269.9</b>	APP CON <b>118.1 284.6</b> (100°-279°) <b>124.35 299.2</b> (280°-099°)	TOWER <b>118.7 257.8</b> Rwy 10L-28R <b>123.775 251.125</b> Rwy 3-21, 10R-28L	GND CON <b>121.9 348.6</b>	CLNC DEL <b>120.125 318.1</b>
-----------------------------	--	---	-------------------------------	----------------------------------

\*\* When ALS inop, increase CAT CDE RVR to 60 and vis to 1 1/2 miles.  
 \*\*\* When VGSI rwy 28R inop, circling rwy 28R NA at night.  
 Simultaneous approach authorized.



EMERG SAFE ALT 100 NM 16,700 FROM "BTG" VORTAC

VGSI and ILS glidepath not coincident (VGSI Angle 3.00/TCH 71).	1100	5000	MULES BTG 17.7	ELEV 31	TDZE 24
	↑	BTG R-160		Rwy 10L ldg 8535'	Rwy 28R ldg 9290'



CATEGORY	C	D	E
S-ILS 10R*	224/18	200	(200-3%)
S-LOC 10R**	440/40	416	(500-3%)
CIRCLING***	1060-3	1029 (1100-3)	1140-3 1109 (1200-3)

REIL Rwy 3-21  
 TDZL/CL Rwy 10R  
 MIRL Rwy 3-21  
 HIRL Rwy 10L-28R, 28L-10R

PORTLAND, OREGON

45°35'N-122°36'W

PORTLAND INTL (KPDX)

Amdt 7C 03NOV22

# HI-ILS or LOC RWY 10R

NW-1, 20 FEB 2025 to 20 MAR 2025

NW-1, 20 FEB 2025 to 20 MAR 2025