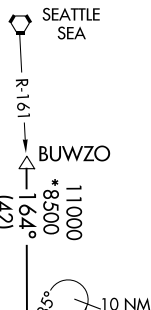


# KRATR TWO ARRIVAL (RNAV)

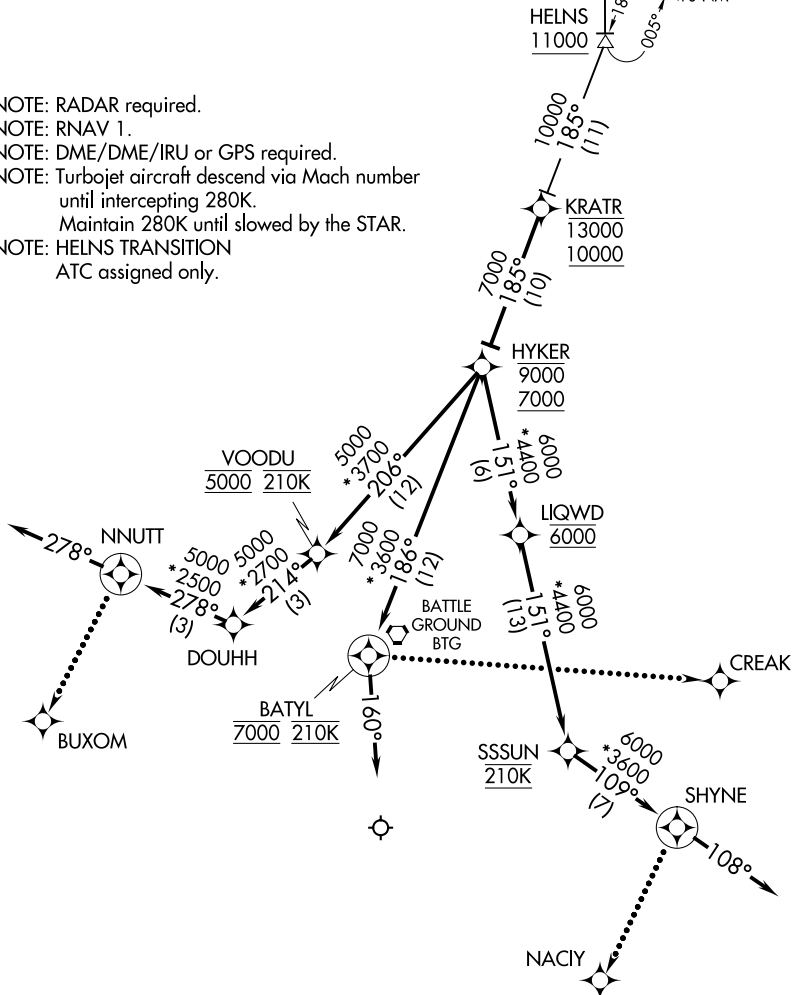
AL-330 (FAA)

PORTLAND, OREGON

D-ATIS  
 128.35 269.9  
 PORTLAND APP CON  
 124.35 299.2  
 PORTLAND TOWER  
 118.7 257.8 (Rwy 10L-28R)  
 123.775 251.125 (Rwys 3-21, 10R-28L)  
 GND CON  
 121.9 348.6



- NOTE: RADAR required.
- NOTE: RNAV 1.
- NOTE: DME/DME/IRU or GPS required.
- NOTE: Turbojet aircraft descend via Mach number until intercepting 280K.
- NOTE: Maintain 280K until slowed by the STAR.
- NOTE: HELNS TRANSITION ATC assigned only.



(NARRATIVE ON FOLLOWING PAGE)

NOTE: Chart not to scale.

# KRATR TWO ARRIVAL (RNAV)

(KRATR.KRATR2) 25JUN15

PORTLAND, OREGON

PORTLAND INTL (PDX)

NW-1, 20 FEB 2025 to 20 MAR 2025

NW-1, 20 FEB 2025 to 20 MAR 2025

ARRIVAL ROUTE DESCRIPTION

BUWZO TRANSITION (BUWZO.KRATR2)

HELNS TRANSITION (HELNS.KRATR2):

From KRATR on track 185° to cross HYKER between 7000 and 9000. Thence. . . .

LANDING RUNWAYS 10L/R: From HYKER on track 206° to cross VOODU at 5000 and at 210K, then on track 214° to DOUHH, then on track 278° to NNUTT, then on track 278°. Expect RADAR vectors to final approach course.

LANDING RUNWAY 21: From HYKER on track 186° to cross BATYL at 7000 and at 210K, then on track 160°. Expect RADAR vectors to final approach course.

LANDING RUNWAYS 28L/R: From HYKER on track 151° to cross LIQWD at 6000, then on track 151° to cross SSSUN at 210K, then on track 109° to SHYNE, then on track 108°. Expect RADAR vectors to final approach course.

LOST COMMUNICATIONS:

LANDING RUNWAYS 10L/R: At NNUTT, turn left direct to BUXOM and execute ILS RWY 10L approach.

LANDING RUNWAY 21: At BATYL turn left direct to CREAK and execute LOC/DME RWY 21 approach.

LANDING RUNWAYS 28L/R: At SHYNE, turn right direct to NACIY and execute ILS RWY 28R approach.

NW-1, 20 FEB 2025 to 20 MAR 2025

NW-1, 20 FEB 2025 to 20 MAR 2025