

|             |          |             |
|-------------|----------|-------------|
| APP CRS     | Rwy Idg  | <b>9290</b> |
| <b>283°</b> | TDZE     | <b>31</b>   |
|             | Apt Elev | <b>31</b>   |

# RNAV (RNP) Z RWY 28R

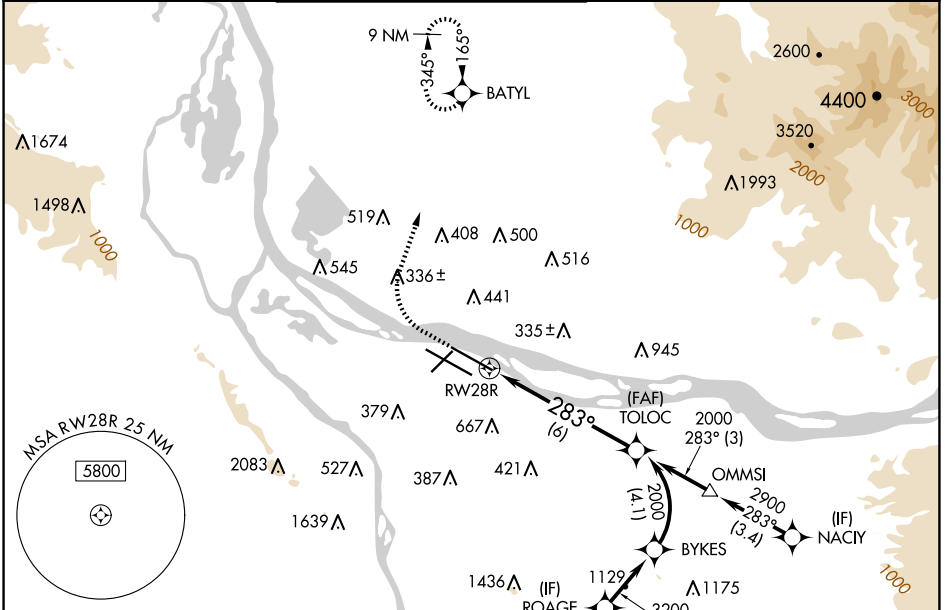
PORTLAND INTL (PDX)

RNP AR APCH - GPS. Authorization required. From BYKES: RF

▼ For uncompensated Baro-VNAV systems, procedure NA below -5°C or above 54°C. Simultaneous approach authorized. For inop ALS increase RNP 0.10 all Cats visibility to RVR 4500, increase RNP 0.20 all Cats visibility to RVR 5500, and increase RNP 0.30 all Cats visibility to RVR 6000.

MALSR MISSED APPROACH: Climb to 600 then climbing right turn to 4400 direct BATYL and hold, continue climb-in-hold to 4400.

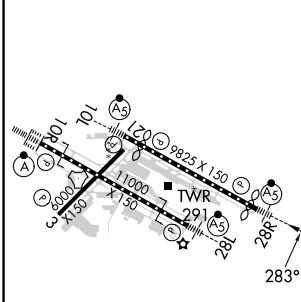
|               |                     |                    |                    |                      |       |
|---------------|---------------------|--------------------|--------------------|----------------------|-------|
| D-ATIS        | PORTLAND APP CON    | PORTLAND TOWER     | GND CON            | CLNC DEL             | CPDLC |
| <b>128.35</b> | <b>124.35 299.2</b> | Rwy 10L-28R        | <b>121.9 348.6</b> | <b>120.125 318.1</b> |       |
| <b>269.9</b>  |                     | Rwys 3-21, 10R-28L |                    |                      |       |



NW-1, 20 FEB 2025 to 20 MAR 2025

NW-1, 20 FEB 2025 to 20 MAR 2025

|      |           |          |      |           |
|------|-----------|----------|------|-----------|
| ELEV | <b>31</b> | <b>D</b> | TDZE | <b>31</b> |
|------|-----------|----------|------|-----------|



|   |      |       |  |          |
|---|------|-------|--|----------|
| 600                                     | 4400 | BATYL | VGSI and RNAV glidepath not coincident (VGSI Angle 3.00/TCH 70). | TOLOC    |
|   |      |       |  | 2000     |
| RWY 28R                                 |      | 283°  |  | 2000     |
| See planview for multiple IF locations. |      |       |  | GP 3.00° |
| 6 NM                                    |      |       |  | TCH 54   |

| CATEGORY    | A | B      | C           | D |
|-------------|---|--------|-------------|---|
| RNP 0.10 DA |   | 322/24 | 291 (300-½) |   |
| RNP 0.20 DA |   | 400/35 | 369 (400-¾) |   |
| RNP 0.30 DA |   | 451/40 | 420 (500-¾) |   |

## AUTHORIZATION REQUIRED