

LOC I-PUB 109.5	APP CRS 080°	Rwy Idg 10496
		TDZE 4671
		Apt Elev 4729

ILS or LOC RWY 8R

PUEBLO MEML (PUB)

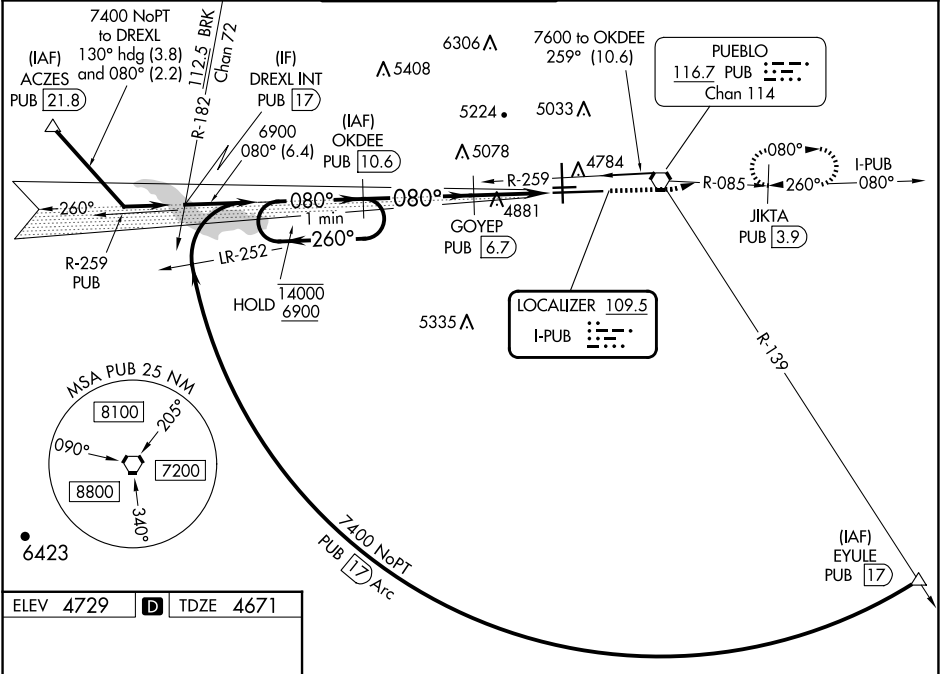
DME required.

⚠ Circling NA for Cat E west of Rwy 17-35. Autopilot coupled approach NA below 4950. Procedure turn NA for Cat E aircraft. DME from PUB VORTAC, simultaneous reception of I-PUB and PUB DME required. For inop ALS, increase S-ILS 8R Cat E visibility to 3/4 SM and S-LOC 8R Cat E visibility to 1 1/2 SM.

MALSR

MISSED APPROACH: Climb to 7000 on heading 070° and on PUB VORTAC R-085 to JIKTA/PUB 3.9 DME and hold, continue climb-in-hold to 7000.

ATIS 125.25	DENVER APP CON ★ 120.1 290.5	PUEBLO TOWER ★ 119.1 (CTAF) 0 257.8	GND CON 121.9	CLNC DEL 120.9	UNICOM 122.95
-----------------------	--	---	-------------------------	--------------------------	-------------------------



ELEV 4729 **D** TDZE 4671

HIRL Rwy 8R-26L **Ⓛ**

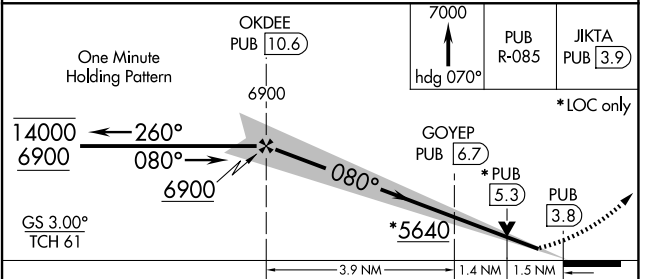
MIRL Rws 17-35 and 8L-26R **Ⓛ**

REIL Rws 8L, 17, 26L, 26R and 35 **Ⓛ**

8310 X 150 4690 X 75 10498 X 150

DOWN 1.0% UP 0.9% 0.4% UP

8R 26R 35 4698 TWR 4732



CATEGORY	A	B	C	D	E
S-ILS 8R	4871-1/2 200 (200-1/2)				
S-LOC 8R	5200-1/2 529 (500-1/2)	5200-1 529 (500-1)			
C CIRCLING	5340-1 611 (700-1)	5580-2 1/2 851 (900-2 1/2)	5800-3 1071 (1100-3)		

SW-1, 20 FEB 2025 to 20 MAR 2025

SW-1, 20 FEB 2025 to 20 MAR 2025