

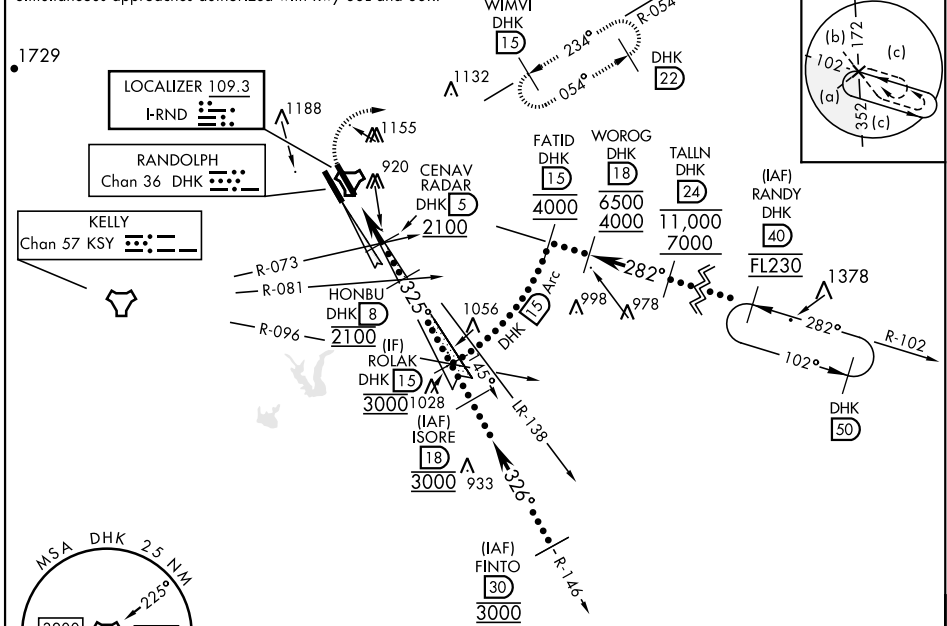
HI-ILS or LOC Z RWY 33R

LOC I-RND 109.3	APCH CRS 325°	Rwy ldg TDZE Arpt Elev 8351 733 761	[USAF]	RANDOLPH AFB (KRND)
---------------------------	-------------------------	---	--------	---------------------

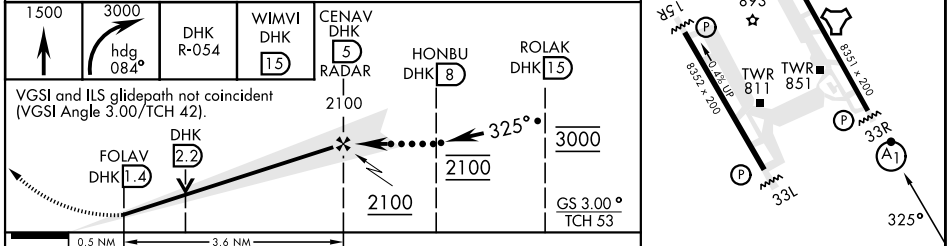
RADAR or DME required		ALSF-1 	MISSED APPROACH: Climb to 1500, then climbing right turn heading 084° to 3000, intercept DHK R-054 to WIMVI and hold.
-----------------------	--	------------	---

ATIS ★ 290.525	SAN ANTONIO APP CON 128.05 318.1	TOWER ★ 128.25 294.7	GND CON 119.65 275.8	CLNC DEL (RWY 15L-33R) 338.35	HANGOVER ATIS ★ 327.8	HANGOVER TOWER ★ 120.5 291.1	HANGOVER GND CON 124.75 353.75
--------------------------	--	--------------------------------	--------------------------------	---	---------------------------------	--	--

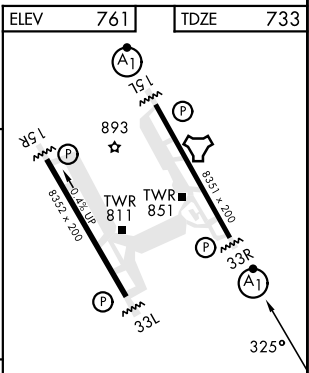
Simultaneous approaches authorized with Rwy 33L and 33R.



EMERG SAFE ALT 100 NM 4100



ELEV	761	TDZE	733
CATEGORY	C	D	E
S-ILS 33R*	933/24	200	(200-½)
S-LOC 33R**	1180/45	447	(500-¾)
CIRCLING***	1260-1½ 499 (500-1½)	1900-3	1139 (1200-3)



HI-ILS or LOC Z RWY 33R

SC-3, 20 FEB 2025 to 20 MAR 2025

SC-3, 20 FEB 2025 to 20 MAR 2025