

HI-TACAN A

TACAN DHK Chan 36	APCH CRS 144°	Rwy ldg TDZE Arprt Elev N/A N/A 761
-----------------------------	-------------------------	---

[USAF]

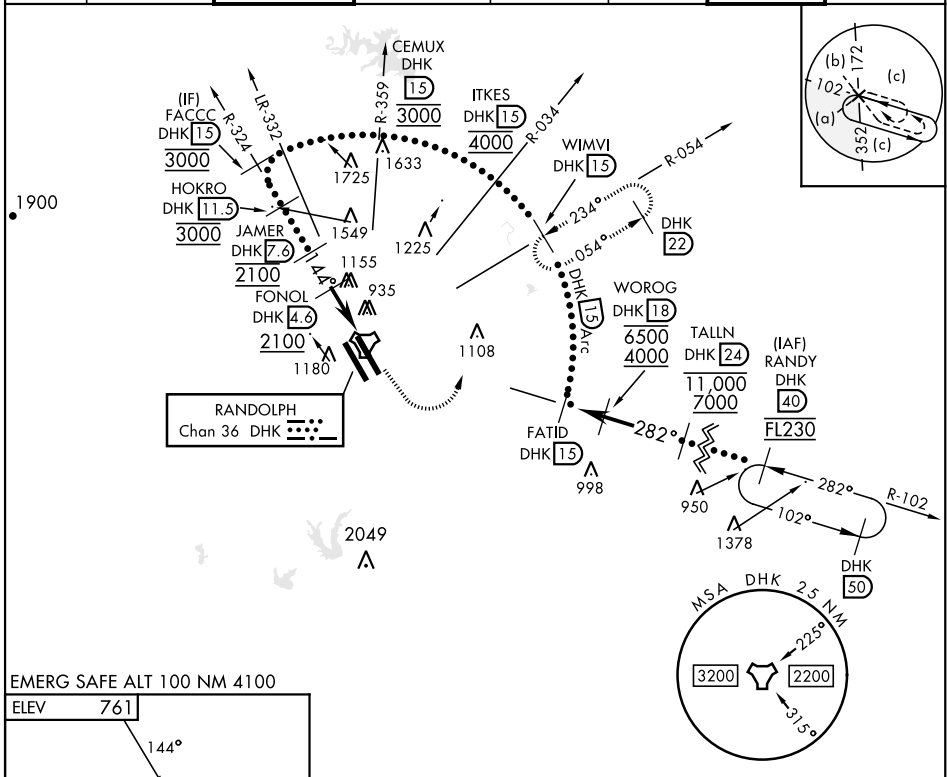
RANDOLPH AFB (KRND)

RADAR required for missed approach monitoring

* Circling not authorized SW of Rwy 15L-33R.

MISSED APPROACH: Track heading 145° to 1500. Then climbing left turn heading 024° to 3000. Intercept DHK TACAN R-054 to WIMVI and hold.

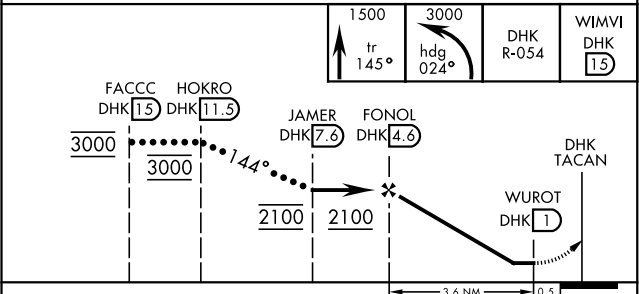
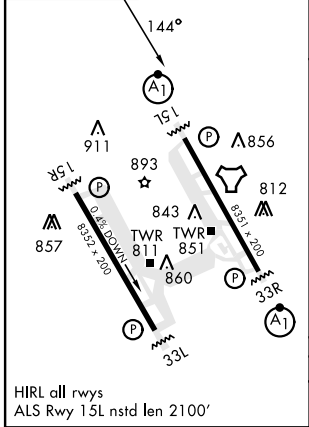
ATIS★ 290.525	SAN ANTONIO APP CON 128.05 318.1	TOWER★ 128.25 294.7	GND CON 119.65 275.8	CLNC DEL (RWY 15L-33R) 338.35	HANGOVER ATIS★ 327.8	HANGOVER TOWER★ 120.5 291.1	HANGOVER GND CON 124.75 353.75
-------------------------	---	-------------------------------	--------------------------------	--	-----------------------------------	--	---



SC-3, 20 FEB 2025 to 20 MAR 2025

SC-3, 20 FEB 2025 to 20 MAR 2025

EMERG SAFE ALT 100 NM 4100
ELEV **761**



CATEGORY	C	D	E
CIRCLING*	1320-1½ 559 (600-1½)	1900-3	1139 (1200-3)

HI-TACAN A