

ILS or LOC RWY 15R

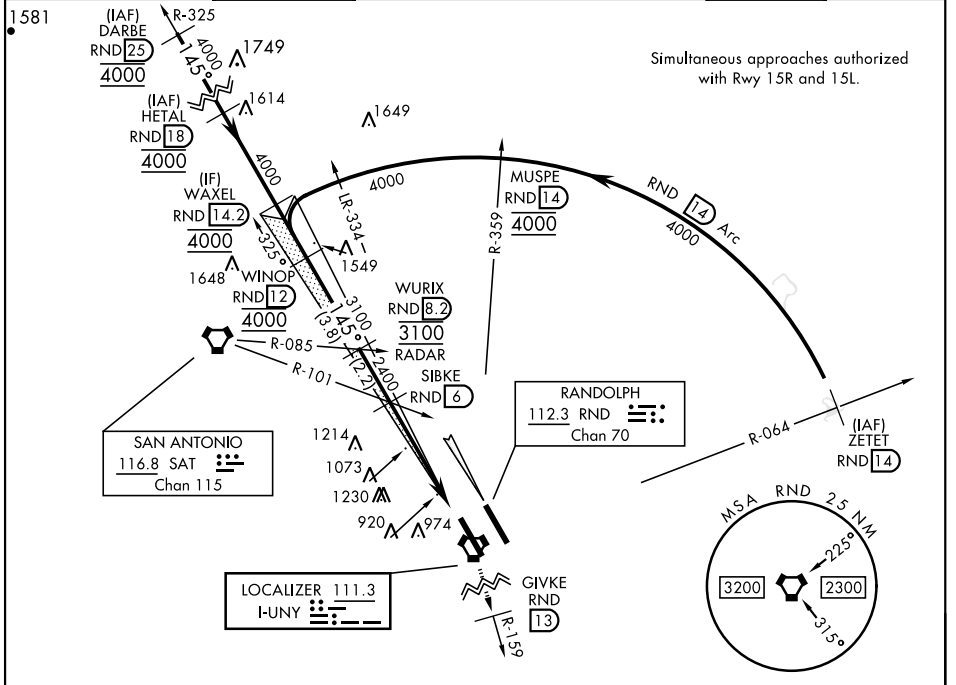
LOC I-UNY 111.3	APCH CRS 145°	Rwy Idg TDZE Arprt Elev 8352 761 761	[USAF]	RANDOLPH AFB (KRND)
---------------------------	-------------------------	--	--------	---------------------

RADAR or DME required.

* Circling not authorized NE of Rwy 15R-33L.

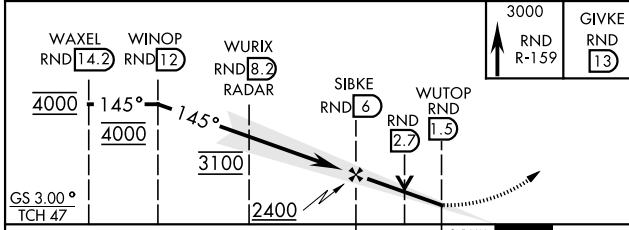
MISSED APPROACH: Climb to 3000 out RND VORTAC
R-159 to 13 DME (GIVKE). Expect ATC instructions.

ATIS ★ 290.525	SAN ANTONIO APP CON 128.05 318.1	TOWER ★ 128.25 294.7	GND CON 119.65 275.8	CLNC DEL (RWY 15L-33R) 338.35	HANGOVER ATIS ★ 327.8	HANGOVER TOWER ★ 120.5 291.1	HANGOVER GND CON 124.75 353.75
--------------------------	--	--------------------------------	--------------------------------	---	---------------------------------	--	--

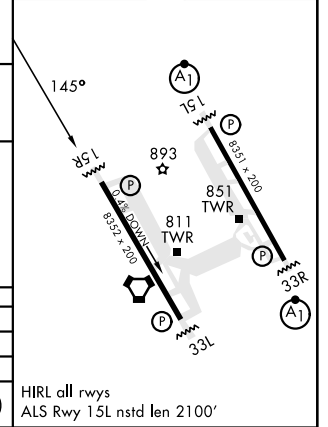


Simultaneous approaches authorized with Rwy 15R and 15L.

EMERG SAFE ALT 100 NM 4100



ELEV	761	TDZE	761
------	-----	------	-----



CATEGORY	A	B	C	D	E
S-ILS 15R	961/40		200	(200-3/4)	
S-LOC 15R	1340/55	579 (600-1)	1340-1 5/8	579	(600-1 5/8)
CIRCLING*	1340-1	579 (600-1)	1500-2 739 (800-2)	2000-3	1239 (1300-3)

HIRL all rwys
ALS Rwy 15L nstd len 2100'

ILS or LOC RWY 15R

SC-3, 20 FEB 2025 to 20 MAR 2025

SC-3, 20 FEB 2025 to 20 MAR 2025