

UNIVERSAL CITY, TEXAS

RNAV (GPS) RWY 15L

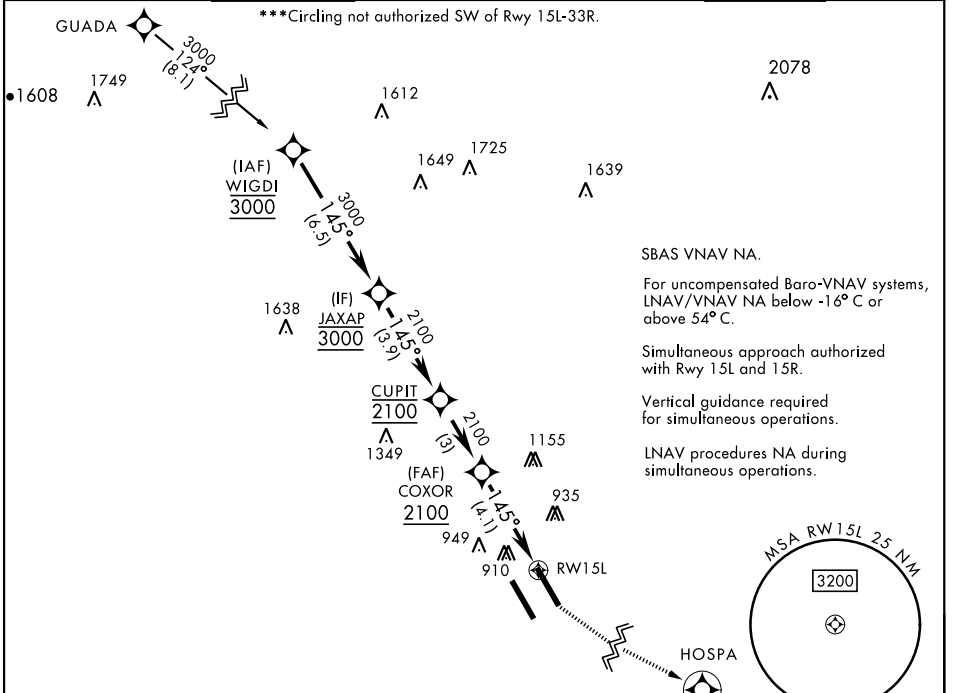
APCH CRS	Rwy Idg	8351
145°	TDZE	742
	Arpt Elev	761

[USAF]

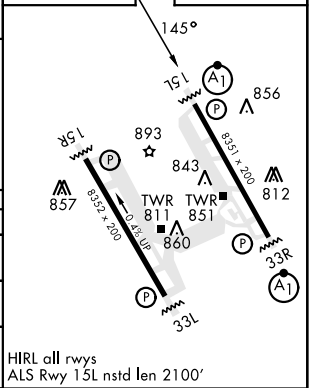
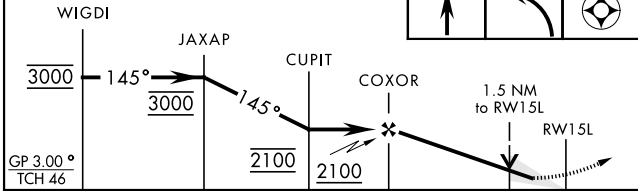
RANDOLPH AFB (KRND)

RNP APCH - GPS		ALSF-1 	MISSED APPROACH: Climb to 1500, then climbing left turn to 3000 direct HOSPA. Expect ATC instructions.
*When ALS inop, increase CAT ABC RVR to 45, vis to 7/8 mile, CAT DE RVR to 50, vis to 1 mile. **When ALS inop, increase CAT AB RVR to 55, vis to 1 mile; CAT CDE vis to 1 1/8 miles.			

ATIS★	SAN ANTONIO APP CON	TOWER★	GND CON	CLNC DEL (RWY 15L-33R)	HANGOVER ATIS★	HANGOVER TOWER★	HANGOVER GND CON
290.525	128.05 318.1	128.25 294.7	119.65 275.8	338.35	327.8	120.5 291.1	124.75 353.75



WIGDI	JAXAP	CUPIT	COXOR	RW15L	HOSPA
3000	3000	2100	2100	1500 / 3000	ELEV 761 / TDZE 742



CATEGORY	A	B	C	D	E
LNAV/VNAV DA*	1043/40 301 (300-3/4)	1054/40 312 (300-3/4)	1062/40 320 (400-3/4)	1073/40 331 (400-3/4)	
LNAV MDA**	1260/40 518 (500-3/4)		1260-1/4	518	(500-1/4)
CIRCLING***	1260-1	499 (500-1)	1260-1 1/2 499 (500-1 1/2)	1900-3	1139 (1200-3)

HIRL all rwys
ALS Rwy 15L nstd len 2100'

UNIVERSAL CITY, TEXAS

29°32'N-98°17'W

RANDOLPH AFB (KRND)

Amdt 4 20FEB25

RNAV (GPS) RWY 15L

SC-3, 20 FEB 2025 to 20 MAR 2025

SC-3, 20 FEB 2025 to 20 MAR 2025