

RNAV (GPS) RWY 15R

APCH CRS	Rwy Idg	8352
145°	TDZE	761
	Arprt Elev	761

[USAF]

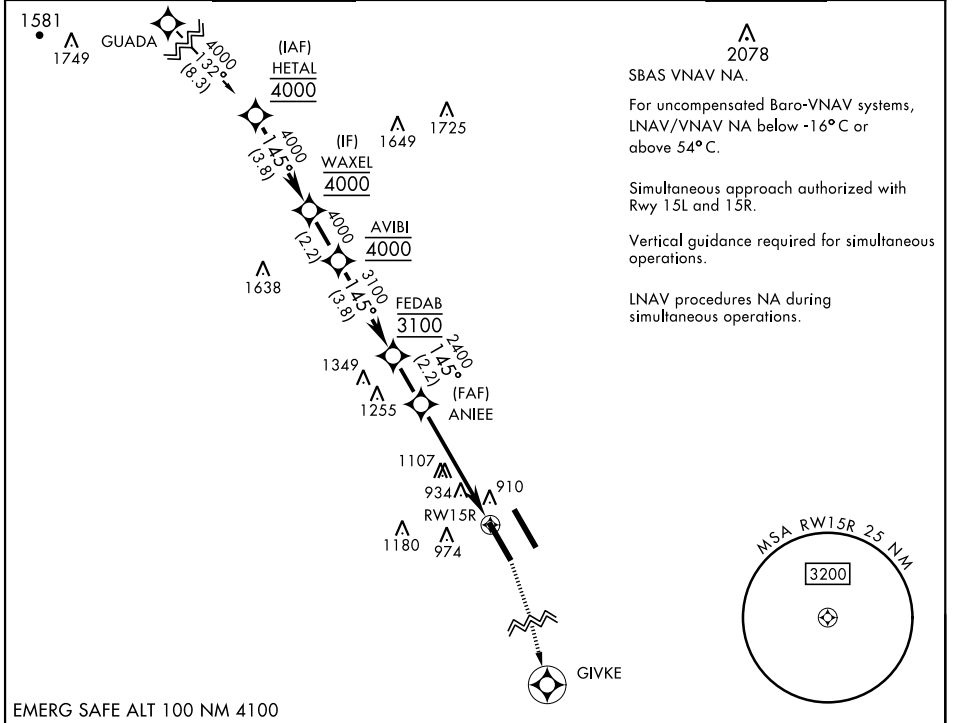
RANDOLPH AFB (KRND)

RNP APCH - GPS

* Circling not authorized NE of Rwy 15R-33L.

MISSED APPROACH: Climb to 1400 then climbing right turn to 3000 direct GIVKE. Expect ATC instructions.

ATIS ★	SAN ANTONIO APP CON	TOWER ★	GND CON	CLNC DEL (RWY 15L-33R)	HANGOVER ATIS ★	HANGOVER TOWER ★	HANGOVER GND CON
290.525	128.05 318.1	128.25 294.7	119.65 275.8	338.35	327.8	120.5 291.1	124.75 353.75



EMERG SAFE ALT 100 NM 4100

	WAXEL	AVIBI	FEDAB	ANIEE	RWY 15R	GIVKE	ELEV 761	TDZE 761
	4000	4000	3100	2400	1.7 NM to RWY 15R			
	145°		145°		5 NM			
	GP 3.00° TCH 47							
CATEGORY	A	B	C	D	E			
LNAV/VNAV DA	1206-1½		445	(500-1½)				
LNAV MDA	1340/55	579 (600-1)	1340-1½	579	(600-1½)			
CIRCLING*	1340-1	579 (600-1)	1500-2 739 (800-2)	2000-3	1239 (1300-3)			
						HIRL all rwys ALS Rwy 15L nstd len 2100'		

RNAV (GPS) RWY 15R

SC-3, 20 FEB 2025 to 20 MAR 2025

SC-3, 20 FEB 2025 to 20 MAR 2025