

SNIDR ONE DEPARTURE (RNAV)

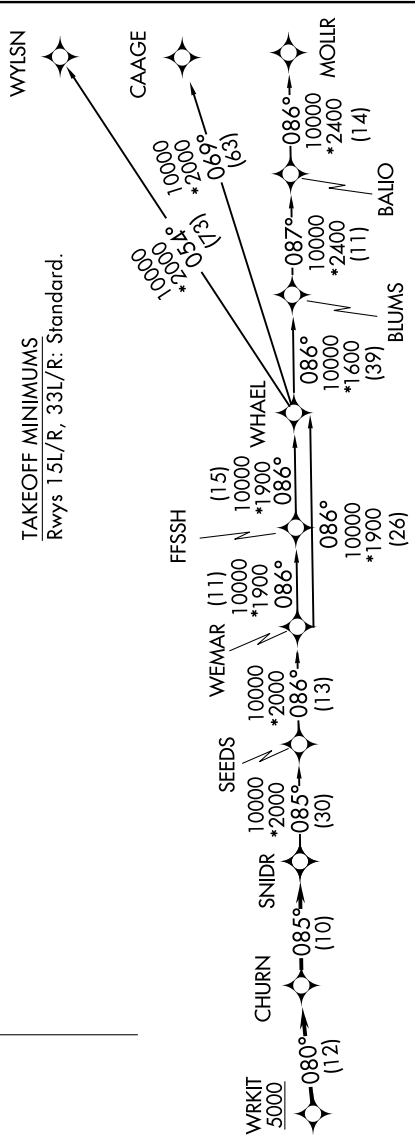
SC-3, 20 FEB 2025 to 20 MAR 2025

**TOP ALTITUDE:
ASSIGNED BY ATC**

RNAV 1 - DME/DME IRU OR GPS.
RADAR required.

RNAV 1 - DME/DME IRU OR GPS.
RADAR required.

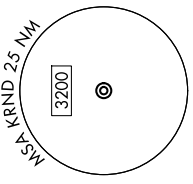
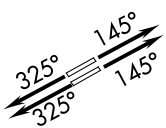
SAN ANTONIO DEP CON
127.1 290.225
ATIS ★
290.525
ATIS (HANGOVER) ★
327.8
CINC DEL (Rwy 15L-33R)
338.35
GND CON
119.65 275.8
GND CON (HANGOVER)
124.75 353.75
TOWER ★
128.25 294.7
HANGOVER TOWER ★
120.5 291.1



DEPARTURE ROUTE DESCRIPTION

TAKEOFF RUNWAYS 15L/R: Climb on heading 145° or as assigned by ATC, for vectors to WRKIT, thence . . .
 TAKEOFF RUNWAYS 33L/R: Climb on heading 325° or as assigned by ATC, for vectors to WRKIT, thence . . .
 . . . on track 080° to CHURN, then on track 085° to SNIDR, then on transition. Maintain ATC assigned altitude.

BLUMS TRANSITION (SNIDR1.BLUMS)
 CAAGE TRANSITION (SNIDR1.CAAGE)
 FFSH TRANSITION (SNIDR1.FFSH)
 MOLLR TRANSITION (SNIDR1.MOLLR)
 SEEDS TRANSITION (SNIDR1.SEEDS)
 WEMAR TRANSITION (SNIDR1.WEMAR)
 WHAEL TRANSITION (SNIDR1.WHAEL)
 WYLSN TRANSITION (SNIDR1.WYLSN)



NOTE: Chart not to scale.

SC-3, 20 FEB 2025 to 20 MAR 2025