

UNIVERSAL CITY, TEXAS

TACAN RWY 15R

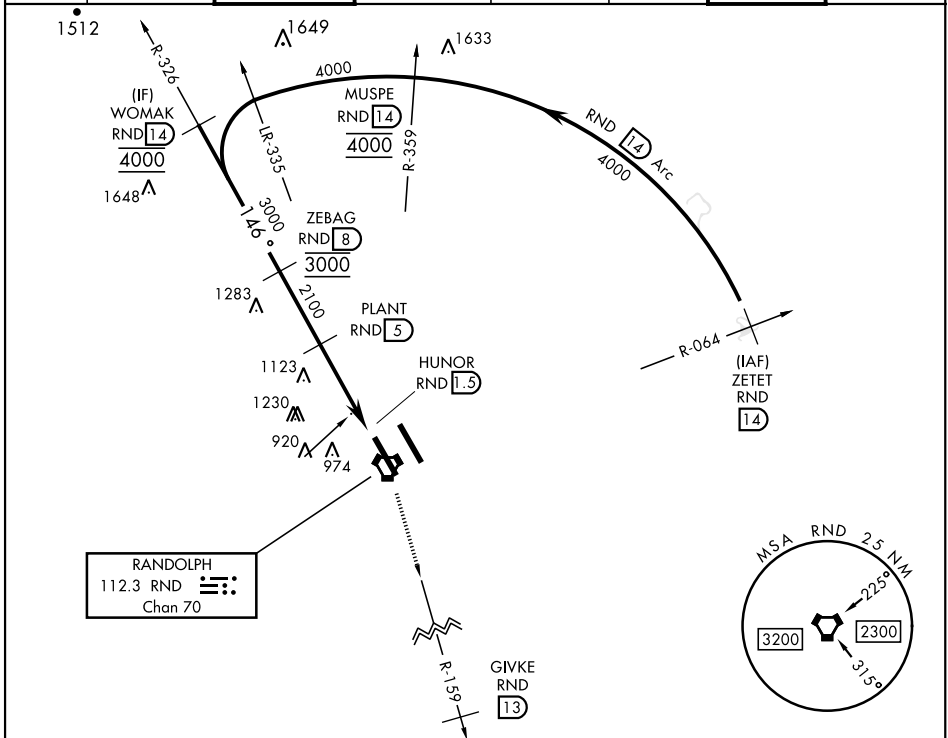
VORTAC RND 112.3 Chan 70	APCH CRS 146°	Rwy Idg TDZE Arpt Elev 8352 761 761	[USAF]	RANDOLPH AFB (KRND)
--	-------------------------	---	--------	---------------------

RADAR required

* Circling not authorized NE of Rwy 15R-33L.

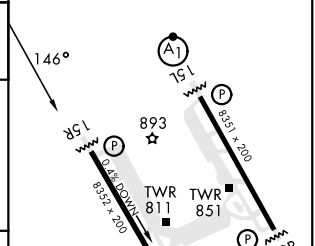
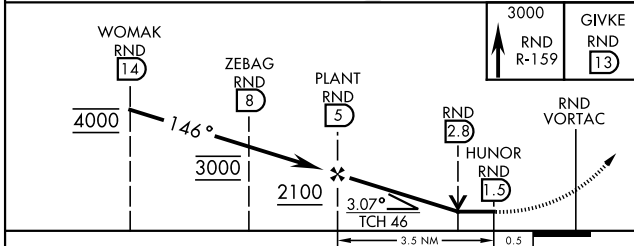
MISSED APPROACH: Climb to 3000 out RND VORTAC R-159 to 13 DME (GIVKE). Expect ATC instructions.

ATIS ★ 290.525	SAN ANTONIO APP CON 128.05 318.1	TOWER ★ 128.25 294.7	GND CON 119.65 275.8	CLNC DEL (RWY 15L-33R) 338.35	HANGOVER ATIS ★ 327.8	HANGOVER TOWER ★ 120.5 291.1	HANGOVER GND CON 124.75 353.75
--------------------------	--	--------------------------------	--------------------------------	---	---------------------------------	--	--



EMERG SAFE ALT 100 NM 4100

ELEV	761	TDZE	761
------	-----	------	-----



CATEGORY	A	B	C	D	E
S-15R	1380/55 619 (700-1)		1380-1 619 (700-1)		
CIRCLING*	1380-1 619 (700-1)		1500-2 739 (800-2)	2000-3 1239 (1300-3)	

HIRL all rwys
ALS Rwy 15L nstd len 2100'

UNIVERSAL CITY, TEXAS 29°32'N-98°17'W RANDOLPH AFB (KRND)

Amdt 3 26DEC24

TACAN RWY 15R

SC-3, 20 FEB 2025 to 20 MAR 2025

SC-3, 20 FEB 2025 to 20 MAR 2025