

(YODUH1.YODUH) 24025

AL-341 (FAA)

RANDOLPH AFB (KRND)

# YODUH ONE DEPARTURE (RNAV)

UNIVERSAL CITY, TEXAS

RNAV 1 - DME/DME IRU or GPS.

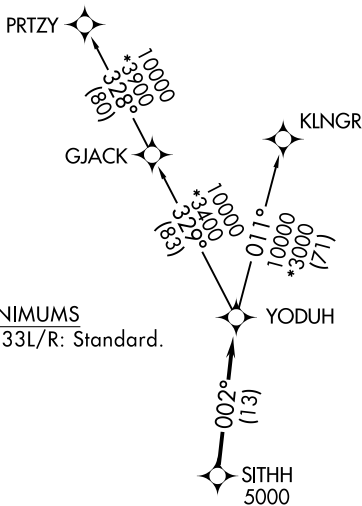
**TOP ALTITUDE:  
ASSIGNED BY ATC**

RADAR required.

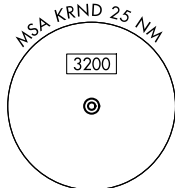
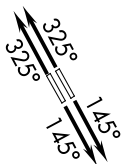
- SAN ANTONIO DEP CON  
127.1 290.225
- ATIS \*
- 290.525
- ATIS (HANGOVER) \*
- 327.8
- CLNC DEL (Rwy 15L-33R)  
338.35
- GND CON  
119.65 275.8
- GND CON (HANGOVER)  
124.75 353.75
- TOWER \*
- 128.25 294.7
- HANGOVER TOWER \*
- 120.5 291.1

### TAKEOFF MINIMUMS

Rwys 15L/R, 33L/R: Standard.



NOTE: Aircraft destined for airports north/northeast of DFW terminal area must file the KLNGR Transition.



NOTE: Chart not to scale.

### DEPARTURE ROUTE DESCRIPTION

TAKEOFF RUNWAYS 15L/R: Climb on heading 145° or as assigned by ATC, for vectors to SITHH, thence . . .

TAKEOFF RUNWAYS 33L/R: Climb on heading 325° or as assigned by ATC, for vectors to SITHH, thence . . .

. . . on track 002° to YODUH, then on Transition. Maintain ATC assigned altitude.

KLNGR TRANSITION (YODUH1.KLNGR)

PRTZY TRANSITION (YODUH1.PRTZY)

# YODUH ONE DEPARTURE (RNAV)

(YODUH1.YODUH) 25JAN24

UNIVERSAL CITY, TEXAS  
RANDOLPH AFB (KRND)

SC-3, 20 FEB 2025 to 20 MAR 2025

SC-3, 20 FEB 2025 to 20 MAR 2025