

LOC I-RCA <b>110.3</b>	APCH CRS <b>310°</b>	Rwy ldg <b>13,497</b> TDZE <b>3192</b> Arprt Elev <b>3276</b>
---------------------------	-------------------------	---

[USAF]

ELLSWORTH AFB (KRCA)

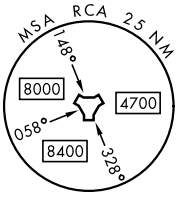
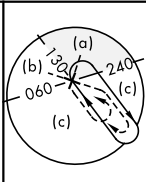
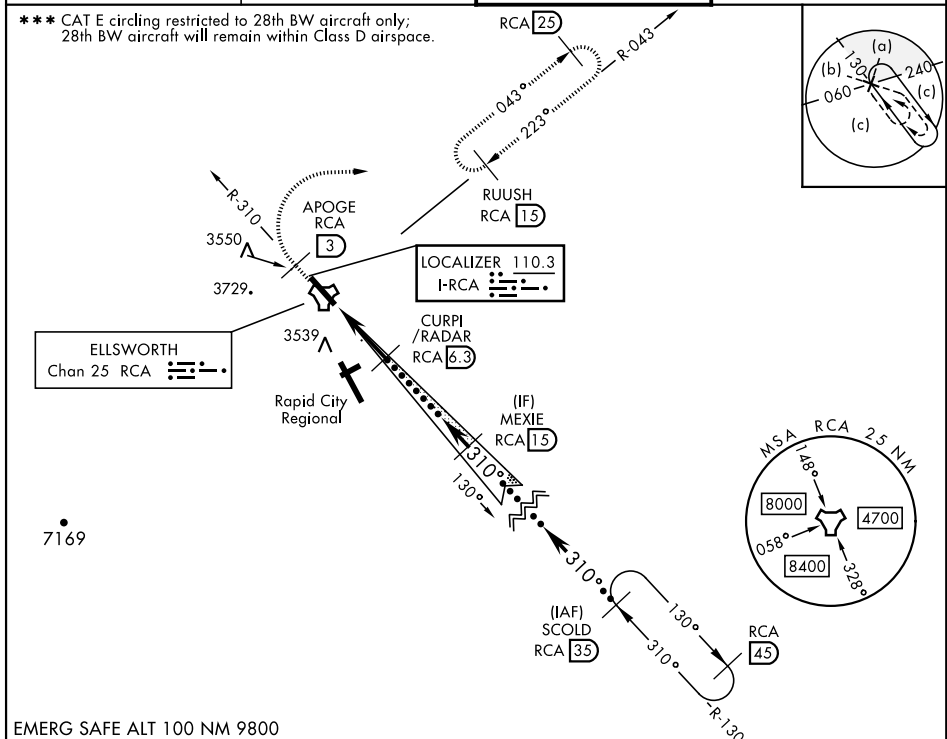
RADAR or DME required.

ALSF-1 MISSED APPROACH: Track outbound RCA R-310 to 3 DME (APOGE), then turn right to join RCA R-043 to 15 DME (RUUSH) and hold. Maintain 6000.

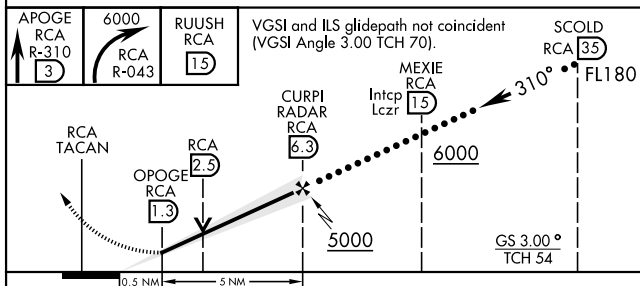
**▼** \* When ALS inop, increase RVR to 40, vis to 3/4 mile.  
\*\* When ALS inop, increase vis to 1 3/4 miles.

ATIS ★ <b>120.625 269.9</b>	APP CON <b>119.5 259.1</b>	TOWER ★ <b>126.05 253.5</b>	GND CON <b>121.8 275.8</b>
--------------------------------	-------------------------------	--------------------------------	-------------------------------

\*\*\* CAT E circling restricted to 28th BW aircraft only; 28th BW aircraft will remain within Class D airspace.



EMERG SAFE ALT 100 NM 9800



ELEV	3276	TDZE	3192
HIRL Rwy 13-31			
FAF to MAP 5.0 NM			
Knots	120	140	160
Min:Sec	2:30	2:09	1:53
	180	200	1:40
			1:30

CATEGORY	C	D	E
S-ILS 31*	3392/24	200	(200-1/2)
S-LOC 31**	3800-1 3/8	608	(600-1 3/8)
*** CIRCLING	3880-1 3/4 604 (700-1 3/4)	3980-2 1/4 704 (800-2 1/4)	4040-2 3/4 764 (800-2 3/4)

NC-1, 20 FEB 2025 to 20 MAR 2025

NC-1, 20 FEB 2025 to 20 MAR 2025