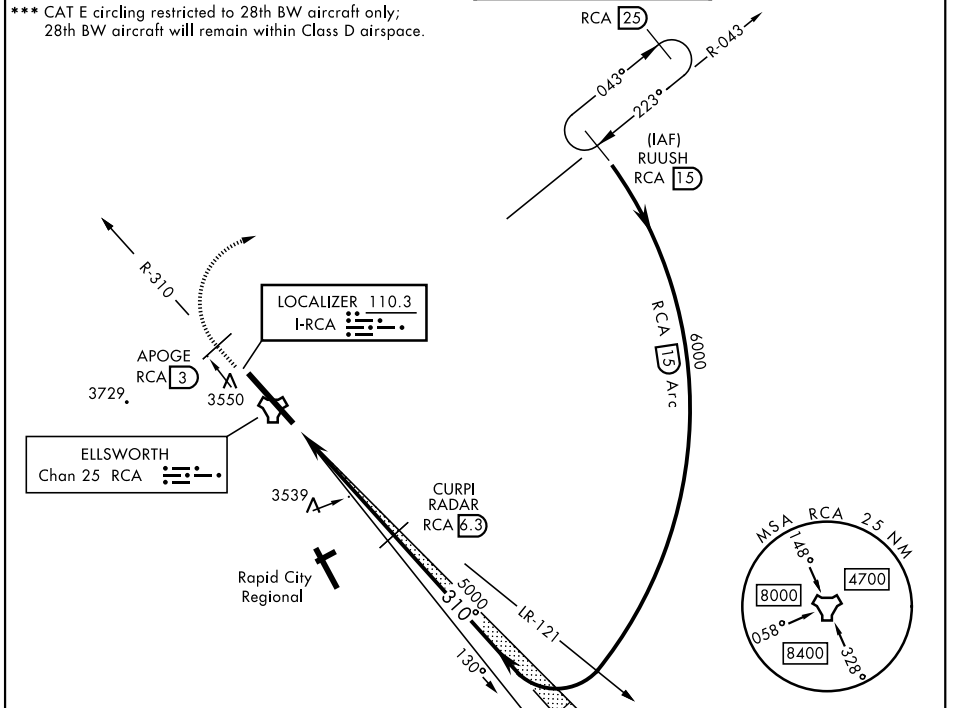


# ILS or LOC Y RWY 31

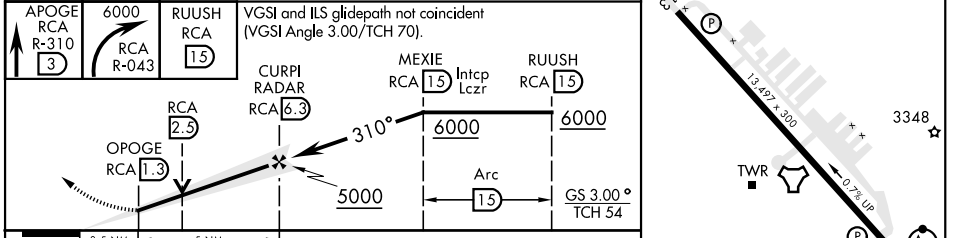
LOC I-RCA <b>110.3</b>	APCH CRS <b>310°</b>	Rwy Ldg <b>13,497</b> TDZE <b>3192</b> Arprt Elev <b>3276</b>	[USAF]	ELLSWORTH AFB (KRCA)
---------------------------	-------------------------	--	--------	----------------------

RADAR or DME required.	ALSF-1 	MISSED APPROACH: Track outbound RCA R-310 to 3 DME (APOGE), then turn right to join RCA R-043 outbound to RCA 15 DME (RUUSH) and hold. Maintain 6000.
------------------------	------------	---

ATIS ★ <b>120.625 269.9</b>	APP CON <b>119.5 259.1</b>	TOWER ★ <b>126.05 253.5</b>	GND CON <b>121.8 275.8</b>
--------------------------------	-------------------------------	--------------------------------	-------------------------------



4364	ELEV 3276	TDZE 3192
EMERG SAFE ALT 100 NM 9800		



CATEGORY	A	B	C	D	E	HIRL Rwy 13-31	
S-ILS 31*	3392/24					200 (200-1/2)	310°
S-LOC 31**	3800/24	608 (600-1/2)	3800-1 3/8	608 (600-1 3/8)		FAF to MAP 5 NM	
CIRCLING ***	3860-1	3880-1	3880-1 3/4	3980-2 1/4	4040-2 3/4	Knots	
	584 (600-1)	604 (700-1)	604 (700-1 3/4)	704 (800-2 1/4)	764 (800-2 3/4)	Min:Sec	
						5:00	
						3:20	
						2:30	
						2:00	
						1:40	

# ILS or LOC Y RWY 31

NC-1, 20 FEB 2025 to 20 MAR 2025

NC-1, 20 FEB 2025 to 20 MAR 2025