

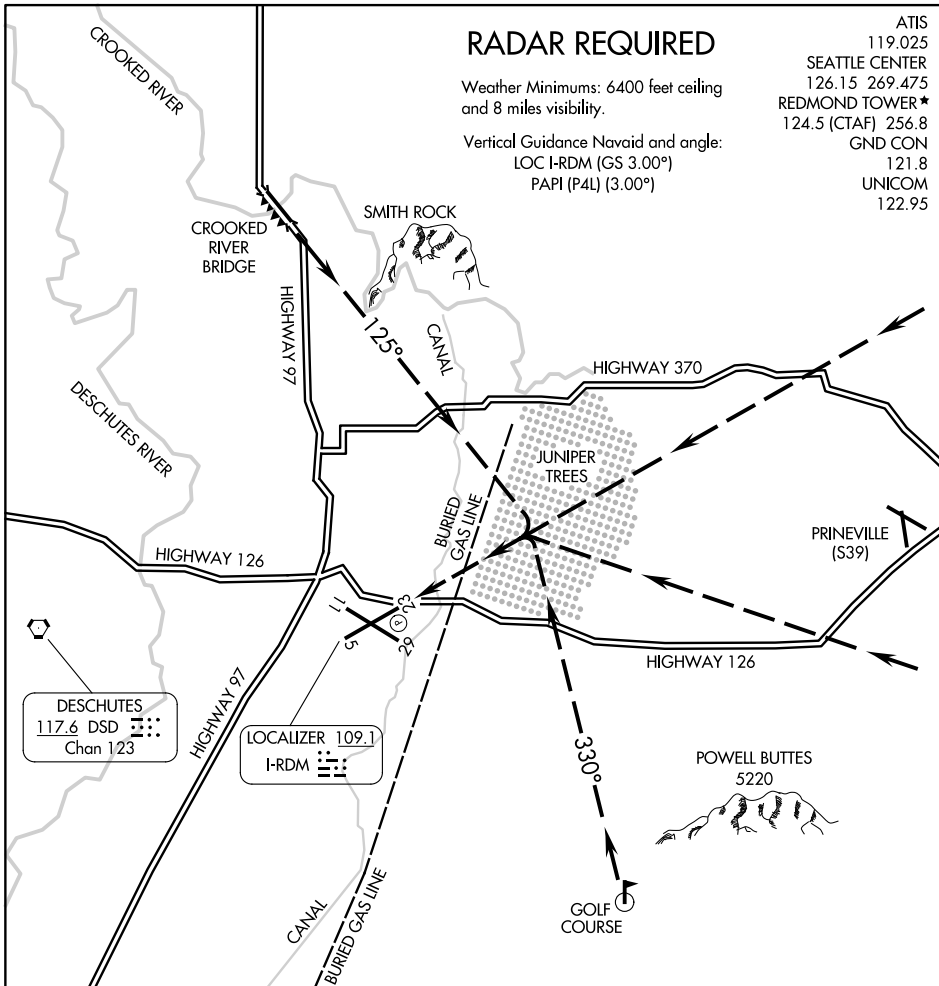
# JUNIPER VISUAL RWY 23

## RADAR REQUIRED

Weather Minimums: 6400 feet ceiling and 8 miles visibility.

Vertical Guidance Navaid and angle:  
LOC I-RDM (GS 3.00°)  
PAPI (P4L) (3.00°)

ATIS 119.025  
 SEATTLE CENTER 126.15 269.475  
 REDMOND TOWER \* 124.5 (CTAF) 256.8  
 GND CON 121.8  
 UNICOM 122.95



NW-1, 20 FEB 2025 to 20 MAR 2025

NW-1, 20 FEB 2025 to 20 MAR 2025

DESCHUTES  
 117.6 DSD  
 Chan 123

LOCALIZER 109.1  
 I-RDM

1 NM	2	3	4	5	6	7	8	9	10	11	12	13	14	15	16	17	18
------	---	---	---	---	---	---	---	---	----	----	----	----	----	----	----	----	----

JUNIPER VISUAL APPROACH RWY 23  
PROCEDURE NOT AUTHORIZED AT NIGHT

# JUNIPER VISUAL RWY 23