


WAAS CH 82514 W23A	APP CRS 226°	Rwy Idg TDZE Apt Elev	7031 3067 3080
--	------------------------	-----------------------------	---

RNAV (GPS) Y RWY 23

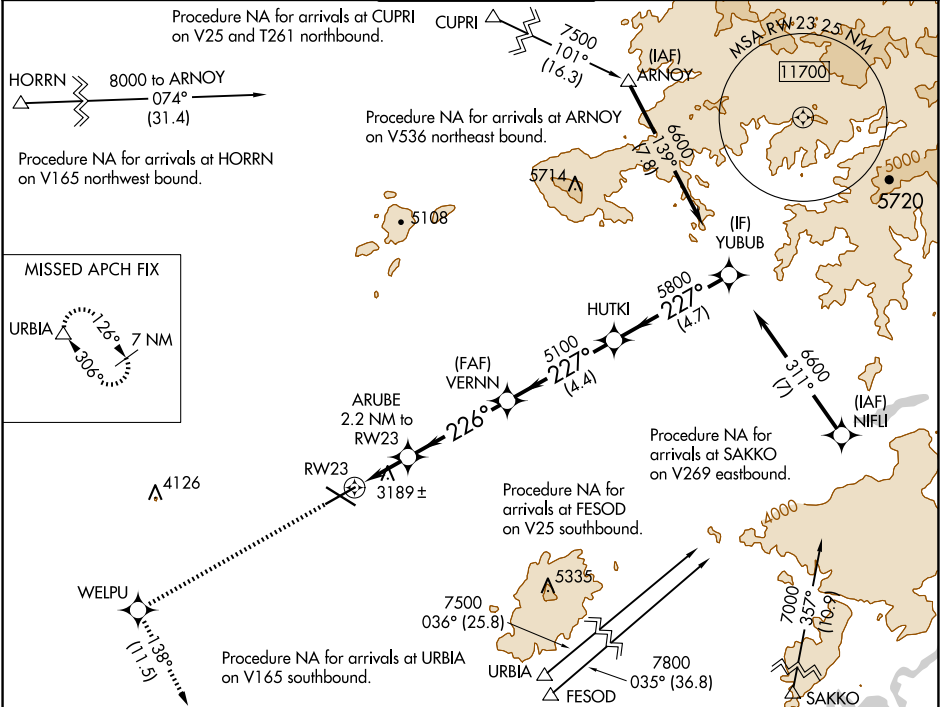
ROBERTS FLD (RDM)

⚠ For uncompensated Baro-VNAV systems, LNAV/VNAV NA below -20°C (-4°F) or above 53°C (128°F).
⚠ -17°C
 DME/DME RNP-0.3 NA. For inop ALS, increase LNAV/VNAV all Cats visibility to 3/8 SM and LNAV Cat C/D visibility to 1 SM.

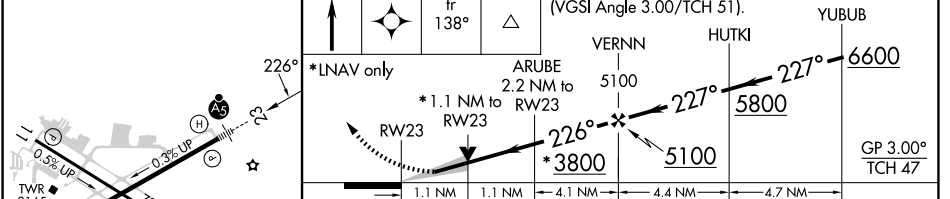
MALSR 

MISSED APPROACH: Climb to 8500 direct WELPU and on track 138° to URBIA and hold, continue climb-in-hold to 8500.

ATIS 119.025	SEATTLE CENTER 126.15 269.475	REDMOND TOWER★ 124.5 (CTAF) 0 256.8	GND CON 121.8	UNICOM 122.95
------------------------	---	---	-------------------------	-------------------------



ELEV 3080	D	TDZE 3067	8500	WELPU	tr 138°	URBIA	VGSI and RNAV glidepath not coincident (VGSI Angle 3.00/TCH 51).
-----------	----------	-----------	------	-------	---------	-------	--



	A	B	C	D
CATEGORY	A	B	C	D
LPV DA		3267-1/2	200 (200-1/2)	
LNAV/VNAV DA		3383-5/8	316 (400-5/8)	
LNAV MDA	3440-1/2	373 (400-1/2)	3440-3/4	373 (400-3/4)
C CIRCLING	3540-1 460 (500-1)	3560-1 480 (500-1)	3640-1 1/2 560 (600-1 1/2)	3760-2 1/4 680 (700-2 1/4)

NW-1, 20 FEB 2025 to 20 MAR 2025

NW-1, 20 FEB 2025 to 20 MAR 2025