

APP CRS	Rwy Idg	7006
288°	TDZE	3080
	Apt Elev	3080

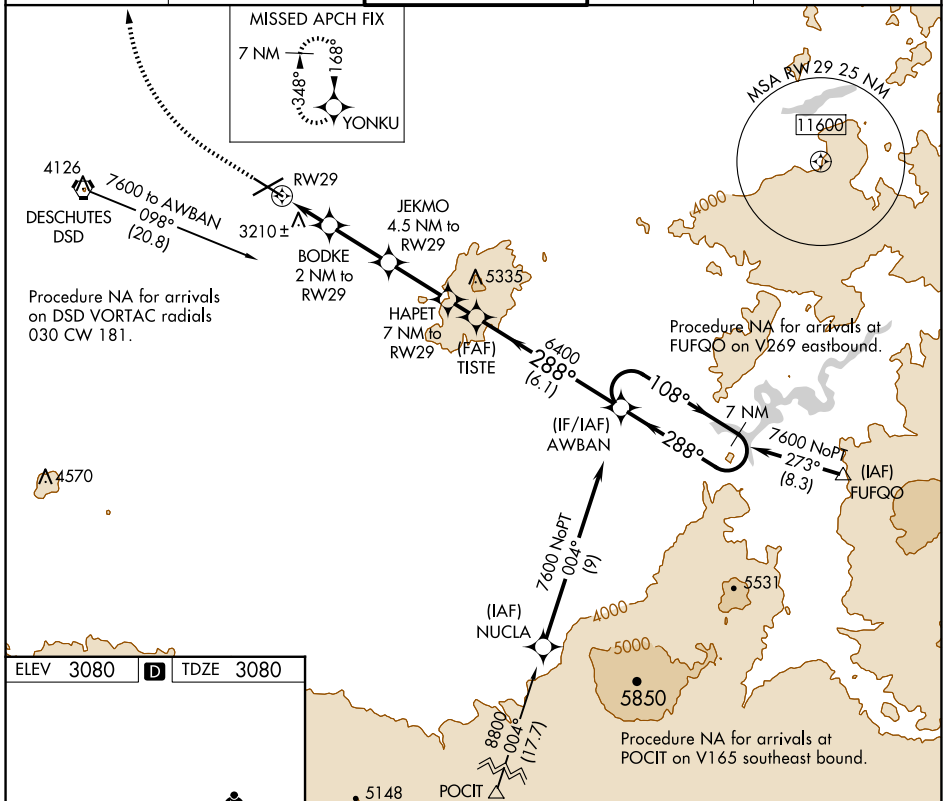
RNAV (GPS) Y RWY 29

ROBERTS FLD (RDM)

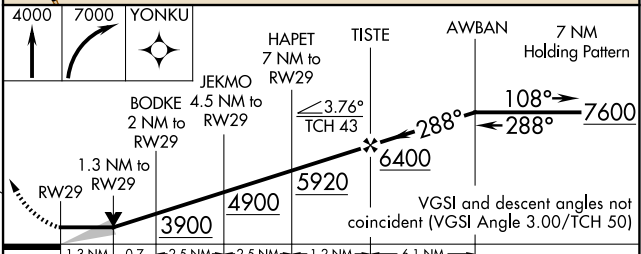
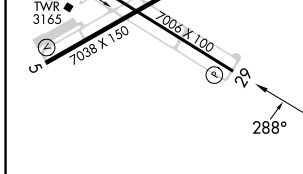
RNP APCH.
3 -17°C

MISSED APPROACH: Climb to 4000 then climbing right turn to 7000 direct YONKU and hold, continue climb-in-hold to 7000.

ATIS 119.025	SEATTLE CENTER 126.15 269.475	REDMOND TOWER★ 124.5 (CTAF) 256.8	GND CON 121.8	UNICOM 122.95
------------------------	---	---	-------------------------	-------------------------



ELEV 3080	D	TDZE 3080
-----------	----------	-----------



	1.3 NM	0.7	2.5 NM	2.5 NM	1.2 NM	6.1 NM
CATEGORY	A		B		C	
LNAV MDA	3560-1 480 (500-1)		3560-1½ 480 (500-1½)		NA	
C CIRCLING	3560-1 480 (500-1)		3640-1½ 560 (600-1½)		NA	

NW-1, 20 FEB 2025 to 20 MAR 2025

NW-1, 20 FEB 2025 to 20 MAR 2025