

(KLUBS.EELZA4) 24025

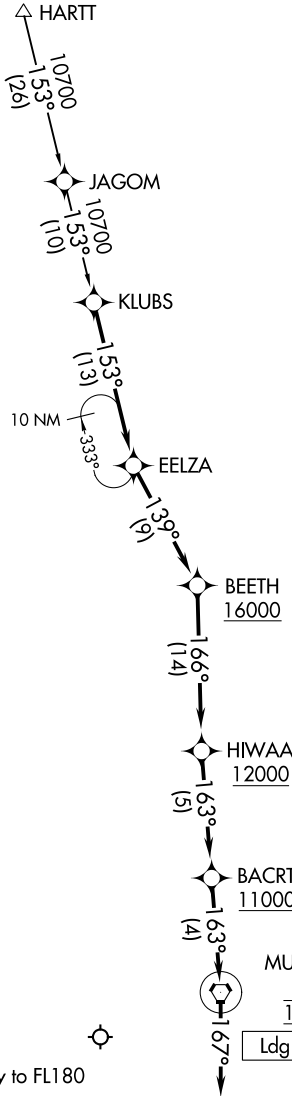
# EELZA FOUR ARRIVAL (RNAV)

AL-346 (FAA)

RENO/TAHOE INTL (RNO)  
RENO, NEVADA

RNAV 1 - GPS.  
RADAR required.

NORCAL APP CON  
126.3 353.9  
D-ATIS  
135.8 363.0  
RENO TOWER  
118.7 257.8



NOTE: GPS required.  
CAUTION: Intense glider activity to FL180

NOTE: Chart not to scale.

## ARRIVAL ROUTE DESCRIPTION

### HARTT TRANSITION (HARTT.EELZA4)

From KLUBS on track 153° to EELZA, then on track 139° to cross BEETH at or above 16000, then on track 166° to cross HIWAA at or above 12000, then on track 163° to cross BACRT at or above 11000, then on track 163° to cross FMG VORTAC at 10000, then on heading 167°. Expect assigned instrument approach for Rwy 35L/R or RADAR vectors to final approach course.

EELZA FOUR ARRIVAL (RNAV)  
(KLUBS.EELZA4) 25JAN24

RENO, NEVADA  
RENO/TAHOE INTL (RNO)

SW-4, 20 FEB 2025 to 20 MAR 2025

SW-4, 20 FEB 2025 to 20 MAR 2025