

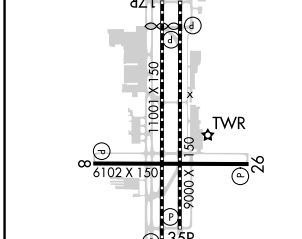
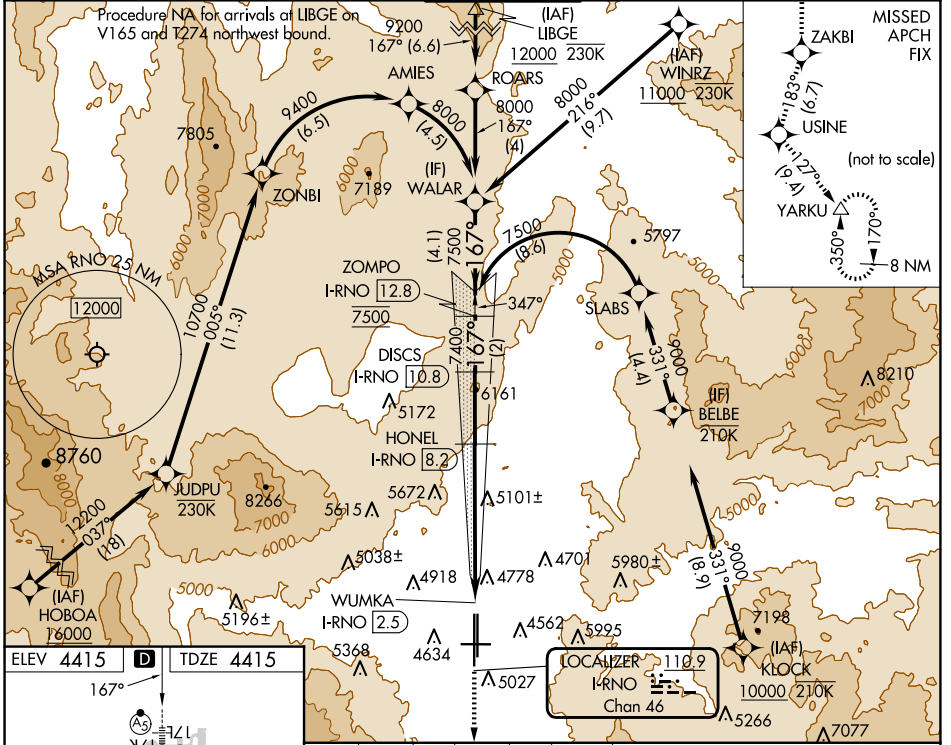
LOC/DME I-RNO 110.9 Chan 46	APP CRS 167°	Rwy Idg 10011 TDZE 4415 Apt Elev 4415
---	------------------------	--

ILS Z or LOC Z RWY 17R

RENO/TAHOE INTL (RNO)

DME required. RNP APCH - GPS. From HOBOA or KLOCK: RF		MALS R	MISSED APPROACH: Climb to 13000 on the RNAV missed approach route to YARKU and hold, continue climb-in-hold to 13000. *Missed approach requires minimum climb of 390 feet per NM to 8000.
<p>▼ Circling Rwy 8 NA at night. # For inop ALS, increase S-ILS 17R all Cats visibility to 2 SM. ❄ -13°C *RVR 1800 authorized with use of FD or AP or HUD to DA.</p>			

D-ATIS 135.8 363.0	NORCAL APP CON 119.2 279.55	CON 126.3 353.9	RENO TOWER 118.7 257.8	GND CON 121.9 348.6	CLNC DEL 124.9 370.85	CPDLC
------------------------------	---------------------------------------	---------------------------	----------------------------------	-------------------------------	---------------------------------	-------



13000	ZAKBI	tr 183°	USINE	tr 127°	YARKU	VGSI and ILS glidepath not coincident (VGSI Angle 3.06/TCH 77).
See planview for multiple IF locations.						DISCS I-RNO [10.8]
						ZOMPO I-RNO [12.8]
						WALAR
						HONEL I-RNO [8.2]
						7400
						WUMKA I-RNO [2.5]
						4.7
						6540
						7400
						8000
						GS 3.10° TCH 59
						0.6
						2.2 NM
						3.5 NM
						2.6 NM
						2 NM
						4.1 NM

CATEGORY	A	B	C	D
S-ILS 17R*		4615/24	200 (200-1/2)	
S-ILS 17R#		5138-1 5/8	723 (800-1%)	
S-LOC 17R	5420/40 1005 (1100-3/4)	5420/55 1005 (1100-1)	5420-2 1/2	1005 (1100-2 1/2)
CIRCLING	5420-1 1/4 1005 (1100-1 1/4)	5420-1 1/2 1005 (1100-1 1/2)	6480-3	2065 (2100-3)

SW-4, 20 FEB 2025 to 20 MAR 2025

SW-4, 20 FEB 2025 to 20 MAR 2025