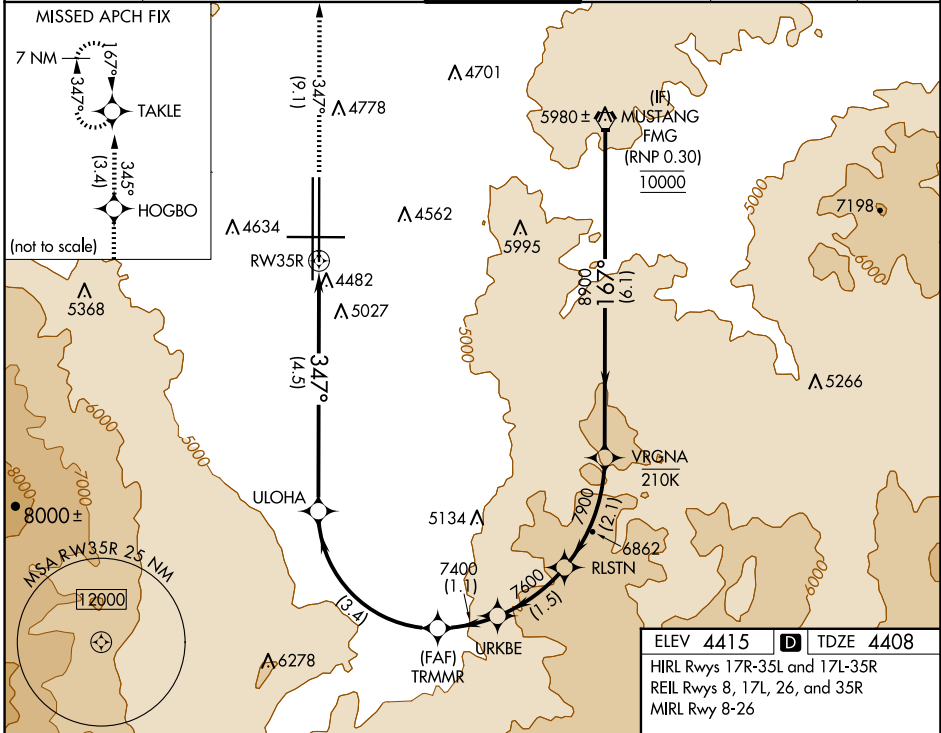


RNAV (RNP) W RWY 35R

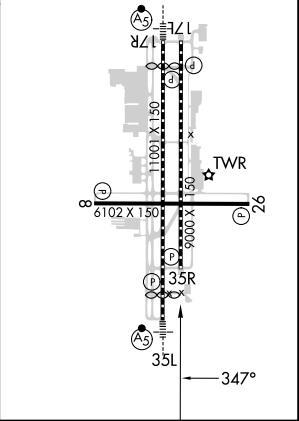
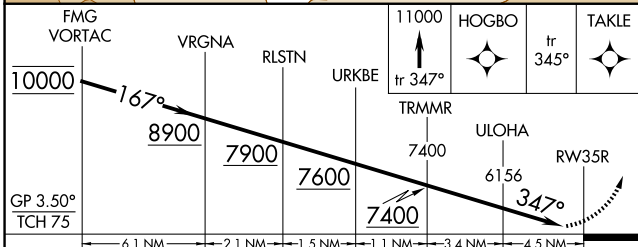
RENO/TAHOE INTL (RNO)

APP CRS 347°	Rwy Idg TDZE Apt Elev	9000 4408 4415
------------------------	-----------------------------	---

RNP AR APCH - GPS.		MISSED APPROACH: Climb to 11000 on track 347° to HOGBO and on track 345° to TAKLE and hold, continue climb-in-hold to 11000. *Missed approach requires minimum climb of 301 feet per NM to 7150.					
For uncompensated Baro-VNAV systems, procedure NA below -9°C or above 34°C. -13°C		D-ATIS	NORCAL APP CON	RENO TOWER	GND CON	CLNC DEL	CPDLC
		135.8 363.0	119.2 279.55 126.3 353.9	118.7 257.8	121.9 348.6	124.9 370.85	



ELEV 4415	D TDZE 4408
HIRL Rwys 17R-35L and 17L-35R	
REIL Rwys 8, 17L, 26, and 35R	
MIRL Rwy 8-26	



CATEGORY	A	B	C	D
RNP 0.11 DA*	4762-1 354 (400-1)			
RNP 0.30 DA	5349-2½ 941 (1000-2½)			

AUTHORIZATION REQUIRED

SW-4, 20 FEB 2025 to 20 MAR 2025

SW-4, 20 FEB 2025 to 20 MAR 2025