

APP CRS	Rwy Idg	9000
167°	TDZE	4415
	Apt Elev	4415

RNAV (RNP) Y RWY 17L

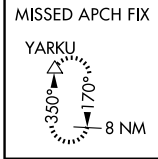
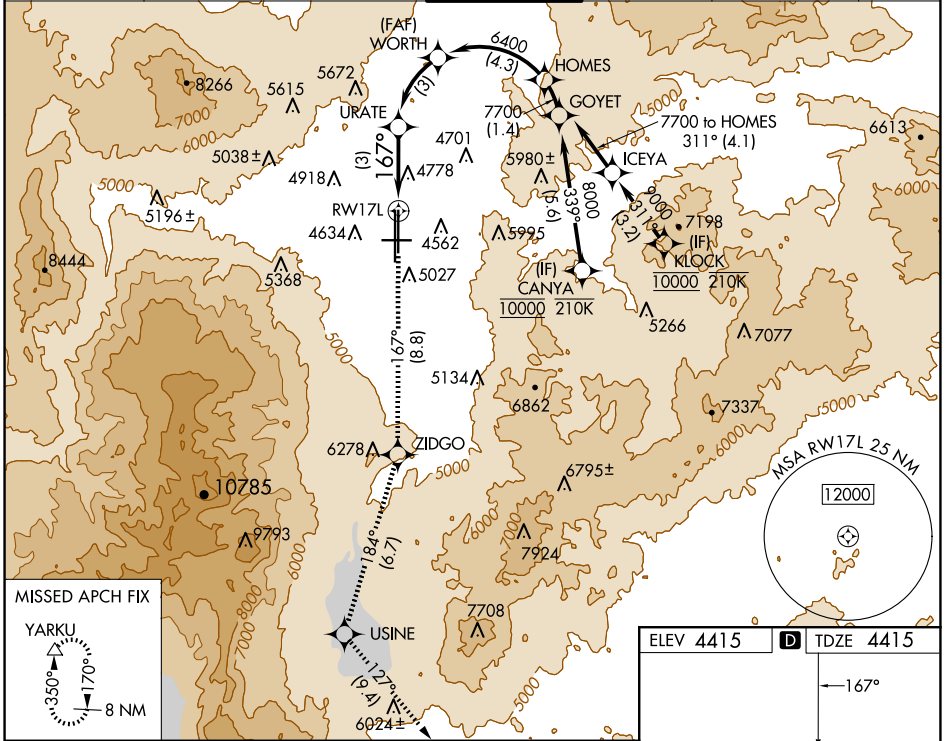
RENO/TAHOE INTL (RNO)

RNP AR APCH - GPS.

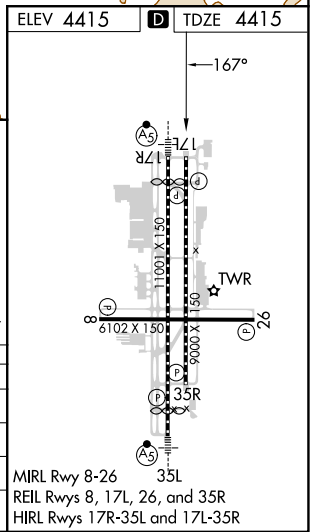
▼ For uncompensated Baro-VNAV systems, procedure NA below -9°C or above 54°C.

⚠ MISSED APPROACH: Climb to 13000 on track 167° to ZIDGO and on track 184° to USINE and on track 127° to YARKU and hold, continue climb-in-hold to 13000. *Missed approach requires minimum climb of 252 feet per NM to 7200. #Missed approach requires minimum climb of 203 feet per NM to 5040.

D-ATIS	NORCAL APP CON			RENO TOWER	GND CON	CLNC DEL	CPDLC
135.8 363.0	119.2	279.55	126.3 353.9	118.7 257.8	121.9 348.6	124.9 370.85	



13000	ZIDGO	USINE	YARKU	See planview for multiple IF locations.			
↑ tr 167°	◆ tr 184°	◆ tr 127°	△	WORTH	HOMES		
URATE		6400	7700				
RWY 17L		5445	6400	GP 3.00° TCH 75			
3 NM		3 NM	4.3 NM				
CATEGORY	A	B	C	D			
RNP 0.12 DA*	4754-1			339 (400-1)			
RNP 0.17 DA#	5017-1¾			602 (700-1¾)			
RNP 0.30 DA	5067-1⅞			652 (700-1⅞)			



AUTHORIZATION REQUIRED

SW-4, 20 FEB 2025 to 20 MAR 2025

SW-4, 20 FEB 2025 to 20 MAR 2025