

APP CRS	Rwy Idg	<b>10001</b>
<b>167°</b>	TDZE	<b>4415</b>
	Apt Elev	<b>4415</b>

# RNAV (RNP) Y RWY 17R

RENO/TAHOE INTL (RNO)

RNP AR APCH - GPS.

**⚠** For uncompensated Baro-VNAV systems, procedure NA below -9°C or above 54°C. For inop ALS, increase RNP 0.1 DA all Cats visibility to RVR 5500, increase RNP 0.2 DA all Cats visibility to 1% SM, increase RNP 0.3 DA all Cats visibility to 1% SM.

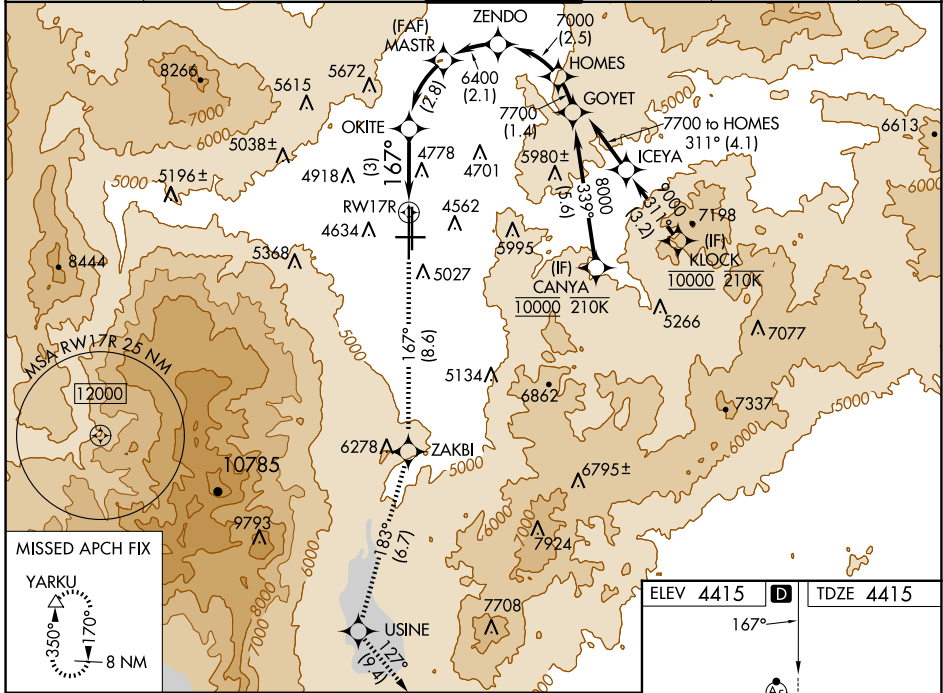
**MALSR**

**MISSED APPROACH:** Climb to 13000 on track 167° to ZAKBI and on track 183° to USINE and on track 127° to YARKU and hold, continue climb-in-hold to 13000.

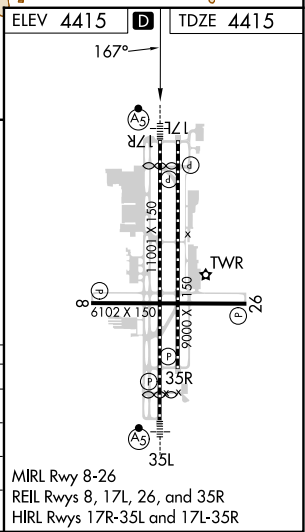
#MISSED approach requires minimum climb of 222 feet per NM to 7220.

\*MISSED approach requires minimum climb of 266 feet per NM to 7240.

D-ATIS	NORCAL APP CON	RENO TOWER	GND CON	CLNC DEL	CPDLC
<b>135.8 363.0</b>	<b>119.2 279.55 126.3 353.9</b>	<b>118.7 257.8</b>	<b>121.9 348.6</b>	<b>124.9 370.85</b>	



13000	ZAKBI	USINE	YARKU	See planview for multiple IF locations.	
↑ tr 167°	✦ tr 183°	✦ tr 127°	△	ZENDO	HOMES
CATEGORY	A	B	C	D	
RNP 0.10 DA*		4759/30	344 (400-3/4)		
RNP 0.20 DA#		4985-1¼	570 (600-1¼)		
RNP 0.30 DA		5091-1½	676 (700-1½)		



**AUTHORIZATION REQUIRED**

MIRL Rwy 8-26  
REIL Rwys 8, 17L, 26, and 35R  
HIRL Rwys 17R-35L and 17L-35R

SW-4, 20 FEB 2025 to 20 MAR 2025

SW-4, 20 FEB 2025 to 20 MAR 2025