

# RNAV (RNP) Z RWY 17L

RENO/TAHOE INTL (RNO)

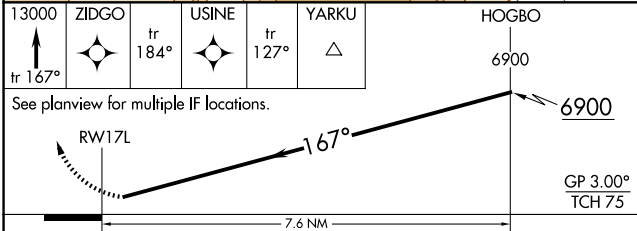
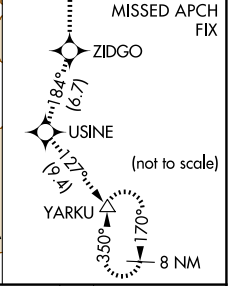
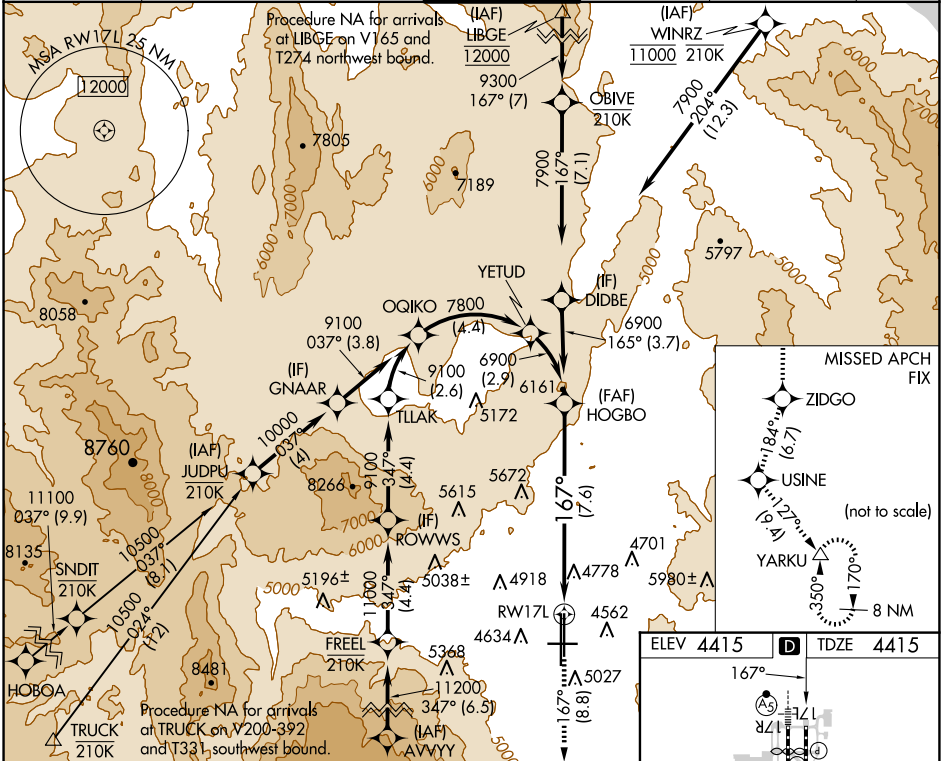
|             |          |             |
|-------------|----------|-------------|
| APP CRS     | Rwy Idg  | <b>9000</b> |
| <b>167°</b> | TDZE     | <b>4415</b> |
|             | Apt Elev | <b>4415</b> |

RNP AR APCH - GPS.

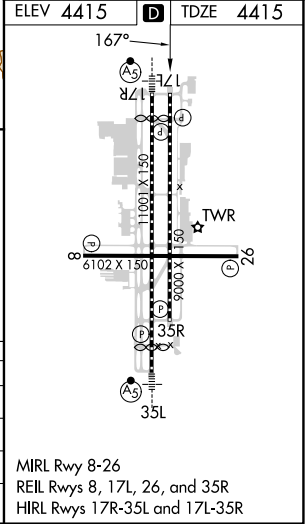
**▼** For uncompensated Baro-VNAV systems, procedure NA below -9°C or above 54°C.

**✈** MISSED APPROACH: Climb to 13000 on track 167° to ZIDGO and on track 184° to USINE and on track 127° to YARKU and hold, continue climb-in-hold to 13000.  
 # Missed approach requires minimum climb of 203 feet per NM to 5040.  
 \* Missed approach requires minimum climb of 264 feet per NM to 7260.

|                    |                                 |                    |                    |                     |       |
|--------------------|---------------------------------|--------------------|--------------------|---------------------|-------|
| D-ATIS             | NORCAL APP CON                  | RENO TOWER         | GND CON            | CLNC DEL            | CPDLC |
| <b>135.8 363.0</b> | <b>119.2 279.55 126.3 353.9</b> | <b>118.7 257.8</b> | <b>121.9 348.6</b> | <b>124.9 370.85</b> |       |



|              |   |         |              |   |
|--------------|---|---------|--------------|---|
| CATEGORY     | A | B       | C            | D |
| RNP 0.12 DA* |   | 4754-1  | 339 (400-1)  |   |
| RNP 0.17 DA# |   | 5017-1¾ | 602 (700-1¾) |   |
| RNP 0.30 DA  |   | 5067-1⅞ | 652 (700-1⅞) |   |



## AUTHORIZATION REQUIRED

SW-4, 20 FEB 2025 to 20 MAR 2025

SW-4, 20 FEB 2025 to 20 MAR 2025