

RNAV (RNP) Z RWY 35R

RENO/TAHOE INTL (RNO)

APP CRS 347°	Rwy Idg 9000
	TDZE 4408
	Apt Elev 4415

RNP AR APCH - GPS.

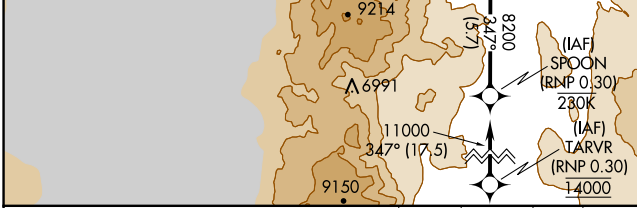
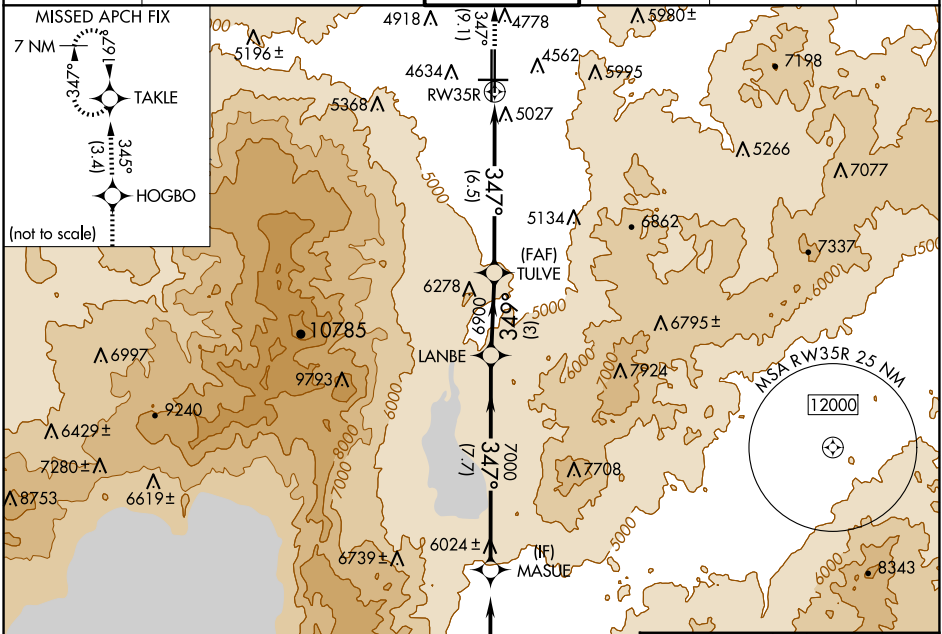
For uncompensated Baro-VNAV systems, procedure NA below -9°C or above 34°C.

-13°C

MISSED APPROACH: Climb to 11000 on track 347° to HOGBO and on track 345° to TAKLE and hold, continue climb-in-hold to 11000.

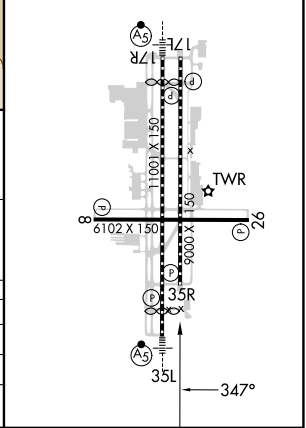
*Missed approach requires minimum climb of 301 feet per NM to 7150.

D-ATIS 135.8 363.0	NORCAL APP CON 119.2 279.55 126.3 353.9	RENO TOWER 118.7 257.8	GND CON 121.9 348.6	CLNC DEL 124.9 370.85	CPDLC
------------------------------	---	----------------------------------	-------------------------------	---------------------------------	-------



ELEV 4415 **D** TDZE 4408

REIL Rwy 8, 17L, 26, and 35R
HIRL Rwy 17R-35L and 17L-35R
MIRL Rwy 8-26



MASUE	LANBE	TULVE	HOGBO	TAKLE
8200	7000	6900	11000	
347°		349°		345°
347°		347°		
7.7 NM		3 NM		6.5 NM
GP 3.50°		TCH 75		

CATEGORY	A	B	C	D
RNP 0.11 DA*	4762-1		354 (400-1)	
RNP 0.30 DA	5349-2½		941 (1000-2½)	

AUTHORIZATION REQUIRED

SW-4, 20 FEB 2025 to 20 MAR 2025

SW-4, 20 FEB 2025 to 20 MAR 2025