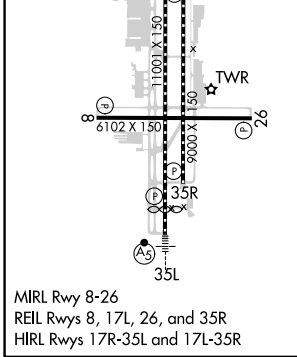
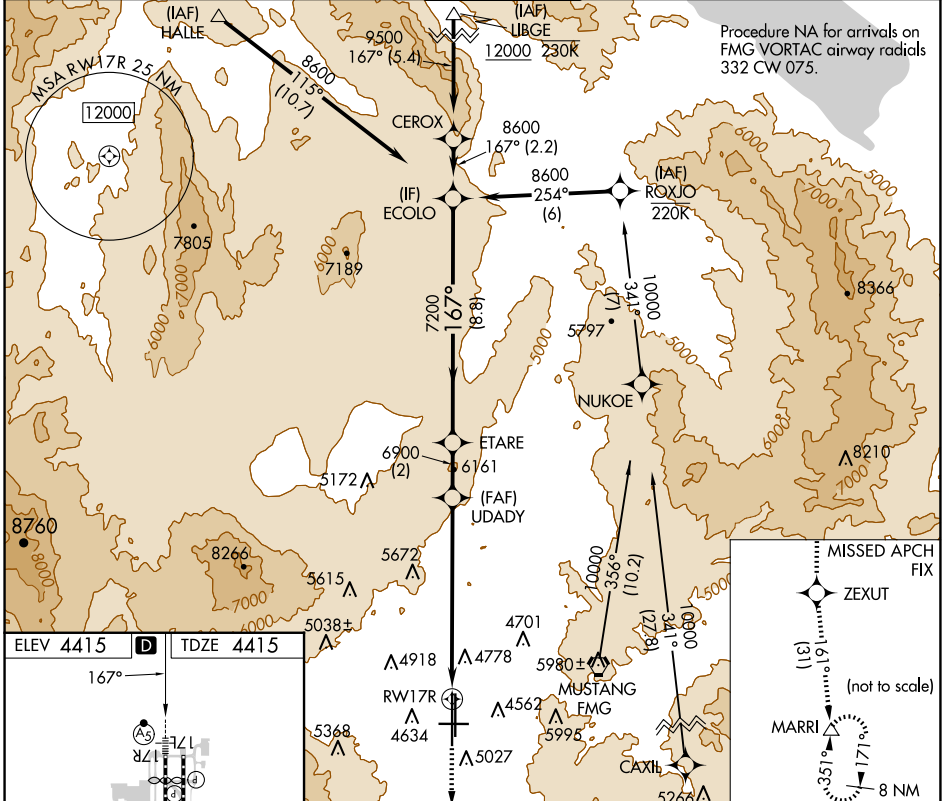


WAAS CH 78309 W17B	APP CRS 167°	Rwy Idg TDZE Apt Elev	10001 4415 4415
--	------------------------	-----------------------------	--

RNAV (GPS) X RWY 17R

RENO/TAHOE INTL (RNO)

RNP APCH - GPS.				MALSR		MISSED APPROACH: Climb to 13000 direct ZEXUT and on track 161° to MARRI and hold.		
<p>▼ For inop ALS, increase LPV all Cats visibility to 2 1/2 SM. ▲ Inop table does not apply to LNAV all Cats. ☁ -13°C</p>								
D-ATIS	NORCAL APP CON			RENO TOWER	GND CON	CLNC DEL		CPDLC
135.8 363.0	119.2 279.55	126.3 353.9	118.7 257.8	121.9 348.6	124.9 370.85			



ELEV 4415	D	TDZE 4415	167°	
<p>13000 ZEXUT ↑ tr 161° MARRI △</p> <p>VGSI and RNAV glidepath not coincident (VGSI Angle 3.06/TCH 77).</p>				
UDADY		ETARE	ECOLO	
RWY 17R		6900	8600	
5.2 NM to RWY 17R		7200	GP 3.16° TCH 59	
-5.2 NM		-2.1 NM	-2 NM	8.8 NM
CATEGORY	A	B	C	D
LPV DA	5239-1 7/8 824 (900-1 7/8)			
LNAV MDA	6200/40 1785 (1800-3/4)	6200/55 1785 (1800-1)	6200-3 1785 (1800-3)	

SW-4, 20 FEB 2025 to 20 MAR 2025

SW-4, 20 FEB 2025 to 20 MAR 2025