

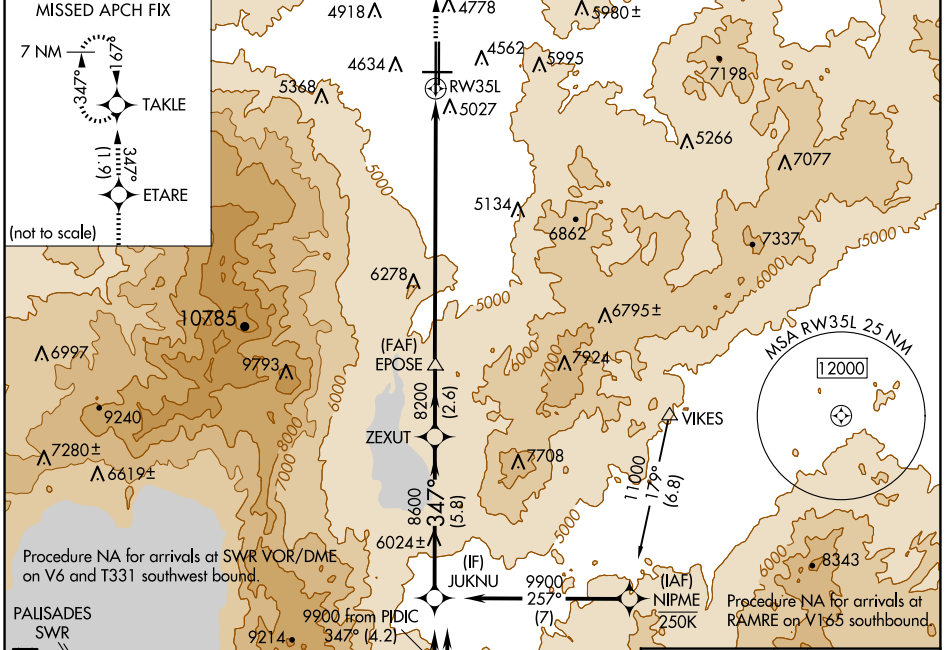
WAAS CH 82609 W35A	APP CRS 347°	Rwy ldg 10011 TDZE 4410 Apt Elev 4415
--	------------------------	--

RNAV (GPS) Y RWY 35L

RENO/TAHOE INTL (RNO)

RNP APCH - GPS. For inop ALS increase LPV all Cats visibility to 3 SM. -13°C	MALSR 	MISSED APPROACH: Climb to 11000 direct ETARE and on track 347° to TAKLE and hold, continue climb-in-hold to 11000. *Missed approach requires minimum climb to 260 feet per NM to 6860.
--	-----------	---

D-ATIS 135.8 363.0	NORCAL APP CON 119.2 279.55 126.3 353.9	RENO TOWER 118.7 257.8	GND CON 121.9 348.6	CLNC DEL 124.9 370.85	CPDLC
------------------------------	---	----------------------------------	-------------------------------	---------------------------------	-------



ELEV 4415	TDZE 4410
HIRL Rwy 17R-35L and 17L-35R REIL Rwy 8, 17L, 26, and 35R MIRL Rwy 8-26	

Procedure NA for arrivals at SWR VOR/DME on V6 and T331 southwest bound.

PALISADES SWR
 11500 091° (16.8)

Procedure NA for arrivals at RICHY on V28-113 southwest bound.

ZAPTU 210K 6991
 11500 to PIDIC 047° (13.5)

9900 from PIDIC 347° (4.2)
 11500 to PIDIC 250K

9900 from SPOON 347° (4.4)
 11500 to SPOON 347° (17.5)

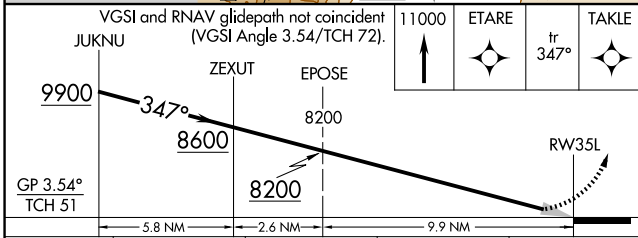
9900 to JUKNU 323° (9.8)
 14000

(IAF) TARVR 14000

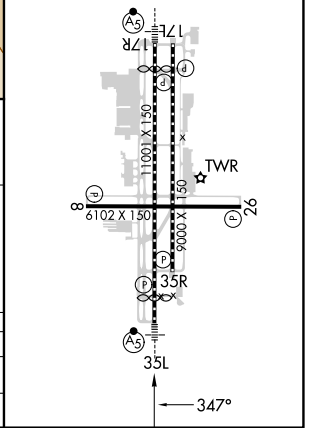
(IAF) SPOON 250K

(IAF) NIPME 250K

(IAF) VIKES



CATEGORY	A	B	C	D
LPV DA*	4740-1/2	330 (400-1/2)		NA
LPV DA	5384-2 1/2	974 (1000-2 1/2)		NA



SW-4, 20 FEB 2025 to 20 MAR 2025

SW-4, 20 FEB 2025 to 20 MAR 2025