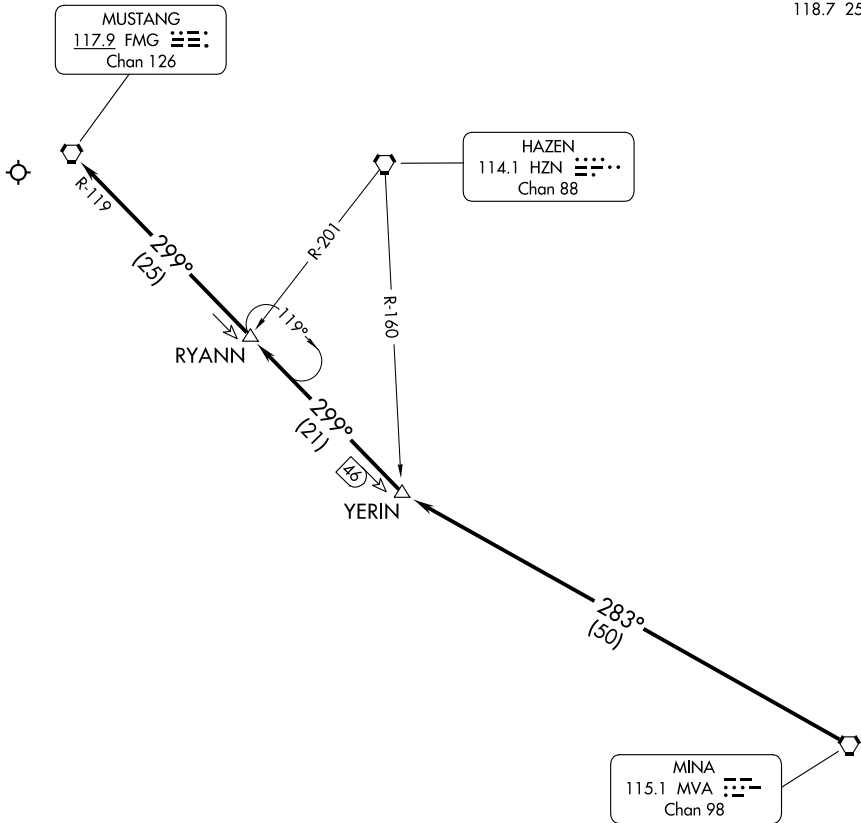


NORCAL APP CON  
 119.2 279.55  
 D-ATIS  
 135.8 363.0  
 RENO TOWER  
 118.7 257.8



SW-4, 20 FEB 2025 to 20 MAR 2025

SW-4, 20 FEB 2025 to 20 MAR 2025

CAUTION: Intense glider activity to FL180.

NOTE: Runways 17L/R only.

NOTE: RADAR required.

NOTE: Chart not to scale.

### ARRIVAL ROUTE DESCRIPTION

RUNWAYS 17L/R: From over MVA VORTAC on MVA R-283 to YERIN, thence on FMG R-119 to FMG VORTAC. Expect RADAR vectors to Runways 17L/R.