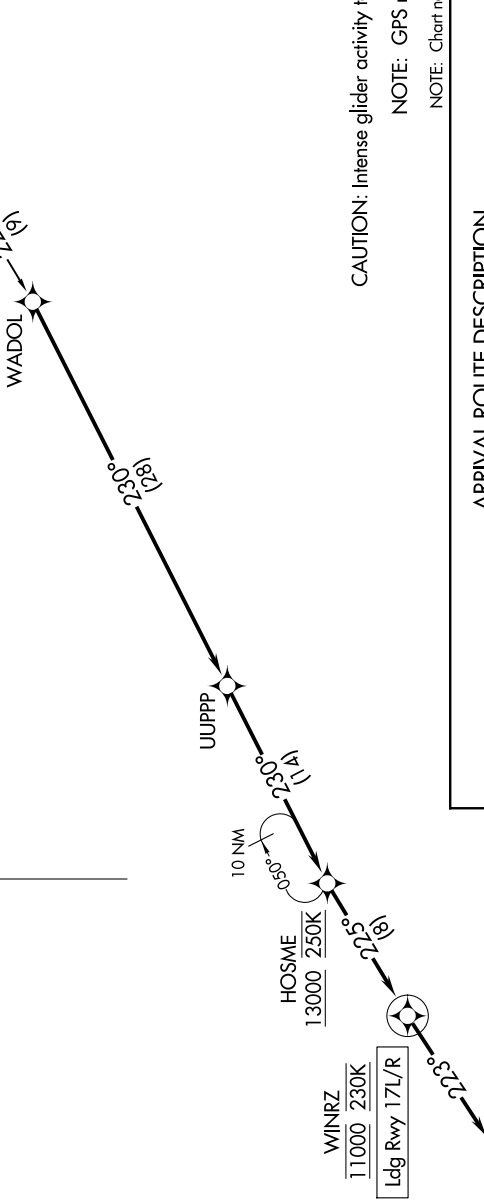


SW-4, 20 FEB 2025 to 20 MAR 2025

NORCAL APP CON
126.3 353.9
D-ATIS
135.8 363.0
RENO TOWER
118.7 257.8

RNAV 1 - GPS.
RADAR required.



CAUTION: Intense glider activity to FL180.
NOTE: GPS required.
NOTE: Chart not to scale.

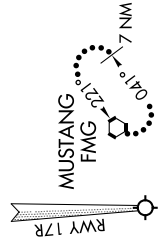
ARRIVAL ROUTE DESCRIPTION

MYBAD TRANSITION (MYBAD.WINRZ1)

From WADOL on track 230° to UUPPP, then on track 230° to cross HOSME at or above 13000 and at 250K, then on track 225° to cross WINRZ at 11000 and at 230K, then on heading 223°. Expect assigned instrument approach for Rwy 17L/R or RADAR vectors to final approach course.

LOST COMMUNICATIONS

At WINRZ, proceed inbound via Rwy 17R ILS approach. If unable, direct to FMG VORTAC and hold.



SW-4, 20 FEB 2025 to 20 MAR 2025