

HI-ILS or LOC Z RWY 32

LOC I-RIV 110.1	APCH CRS 315°	Rwy Ldg 13,302 TDZE 1497 Arpt Elev 1536	AL-348 [USAF]	MARCH ARB (KRIV)
---------------------------	-------------------------	--	----------------------	-------------------------

▼ * When ALS inop, increase CAT CDE RVR to 40 and vis to ¾ mile.
 ** When ALS inop, increase CAT CDE RVR to 60 and vis to 1 ½ mile.
 *** Circling not authorized NE of Rwy 14-32. Rapid rising terrain.

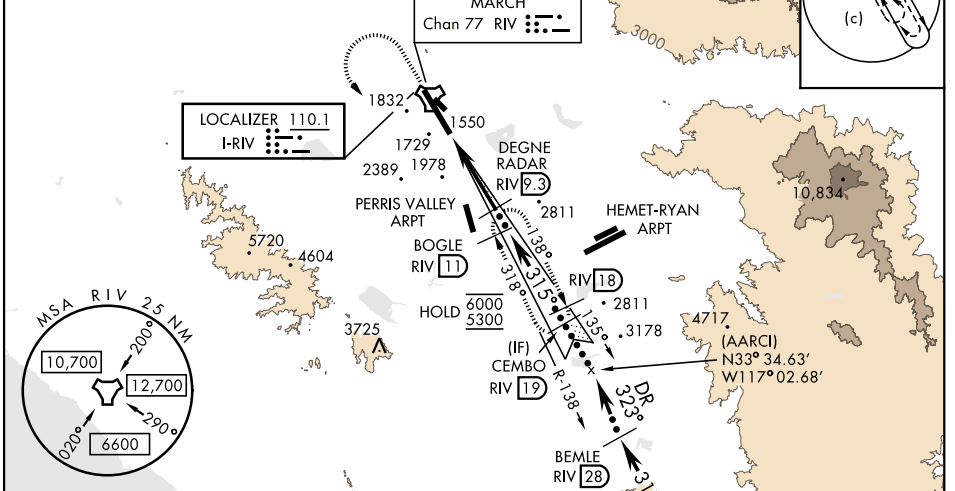
ALS-1

† MISSED APPROACH: Climb to 5300 direct RIV TACAN, then turn left to intercept RIV R-138 direct BOGLE, continue climb in hold to 5300.

ATIS 134.75 239.05	APP/DEP CON ★ 133.5 306.975	TOWER 127.65 253.5	GND CON 121.75 335.8	CLNC DEL 127.775 268.7
------------------------------	---------------------------------------	------------------------------	--------------------------------	----------------------------------

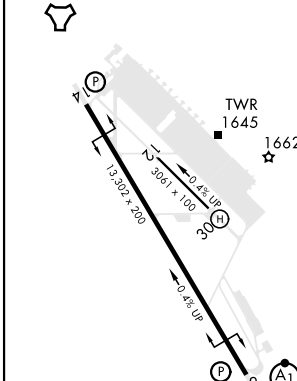
CAUTION: Ultralights, balloons, parachutists in vicinity of Perris Valley Arpt.

† Missed approach requires use of RNAV or ATC RADAR monitoring.



EMERG SAFE ALT 100 NM 13,700 FROM "RIV" TACAN

ELEV 1536	TDZE 1497
------------------	------------------



HIRL Rwy 14-32	BOGLE RIV [1]	DEGNE RADAR RIV [9.3]	CEMBO RIV [19]	BEMLE R-137 RIV [28]	HENSA RIV [45] R-137
FAF to MAP 5.9 NM	RIV R-138	RIV [9.9]	Intcp Ldzt (AARCI)	FL240	FL240
Category	C	C	D	E	E
S-ILS 32 *		1697/24	200	(200-½)	
S-LOC 32 **		1900/40	403	(400-¾)	
Min:Sec		2:57	2:32	2:13	1:58
Min:Sec		2:57	2:32	2:13	1:58
Ⓢ CIRCLING		2300-2¼ 764 (800-2¼)	2440-3 904 (1000-3)	2840-3 1304 (1400-3)	

HI-ILS or LOC Z RWY 32

SW-3, 20 FEB 2025 to 20 MAR 2025

SW-3, 20 FEB 2025 to 20 MAR 2025