

ILS or LOC X RWY 32

LOC I-RIV 110.1	APCH CRS 315°	Rwy Idg 13,302 TDZE 1497 Arpt Elev 1536	AL-348 [USAF]	MARCH ARB (KRIV)
---------------------------	-------------------------	--	---------------	------------------

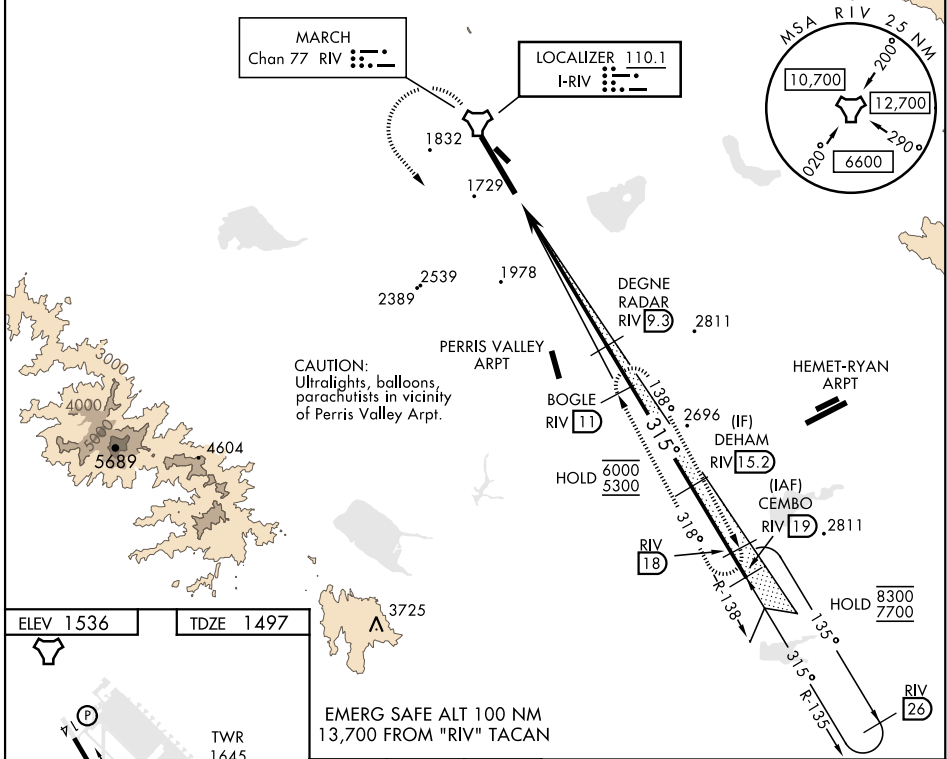
▼ *When ALS inop, increase RVR to 40 and vis to ¼ mile.
 **When ALS inop, increase CAT AB RVR to 55 and vis to 1 mile and CAT CDE RVR to 60 and vis to 1½ miles.

† MISSED APPROACH: Climb to 5300 direct RIV TACAN, then turn left to intercept RIV R-138 direct BOGLE, continue climb in hold to 5300.

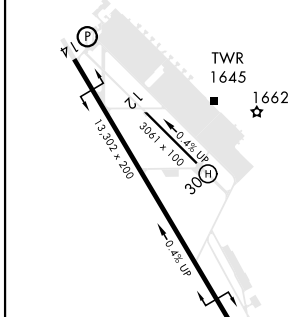
ATIS 134.75 239.05	APP/DEP CON ★ 133.5 306.975	TOWER 127.65 253.5	GND CON 121.75 335.8	CLNC DEL 127.775 268.7
------------------------------	---------------------------------------	------------------------------	--------------------------------	----------------------------------

*** Circling not authorized NE of Rwy 14-32. Rapid rising terrain.

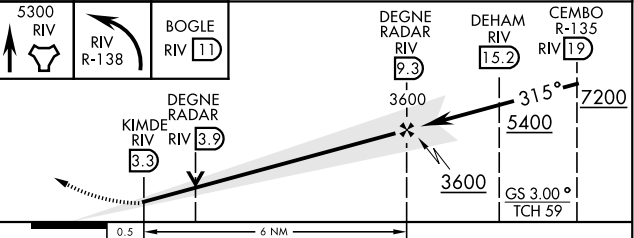
† Missed approach requires use of RNAV or ATC monitoring.



ELEV 1536	TDZE 1497
-----------	-----------



EMERG SAFE ALT 100 NM
13,700 FROM "RIV" TACAN



CATEGORY	A	B	C	D	E
S-ILS 32 *	1697/24		200	(200-½)	
S-LOC 32 **	1900/24	403 (400-½)	1900/40	403 (400-¾)	
Ⓢ CIRCLING ***	2180-1 644 (700-1)	2260-1 724 (800-1)	2300-2¼ 764 (800-2¼)	2440-3 904 (1000-3)	2840-3 1304 (1400-3)

ILS or LOC X RWY 32

SW-3, 20 FEB 2025 to 20 MAR 2025

SW-3, 20 FEB 2025 to 20 MAR 2025