

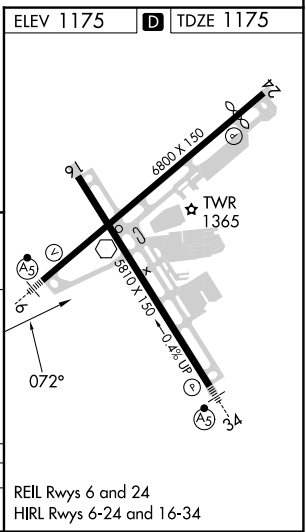
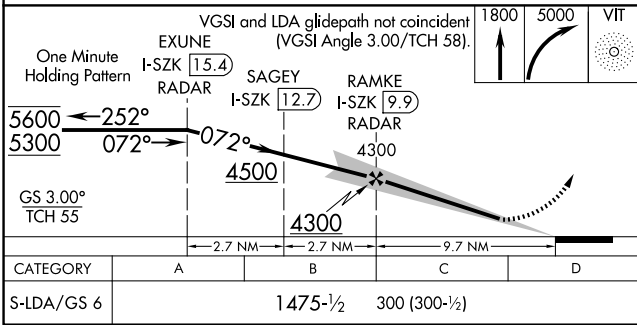
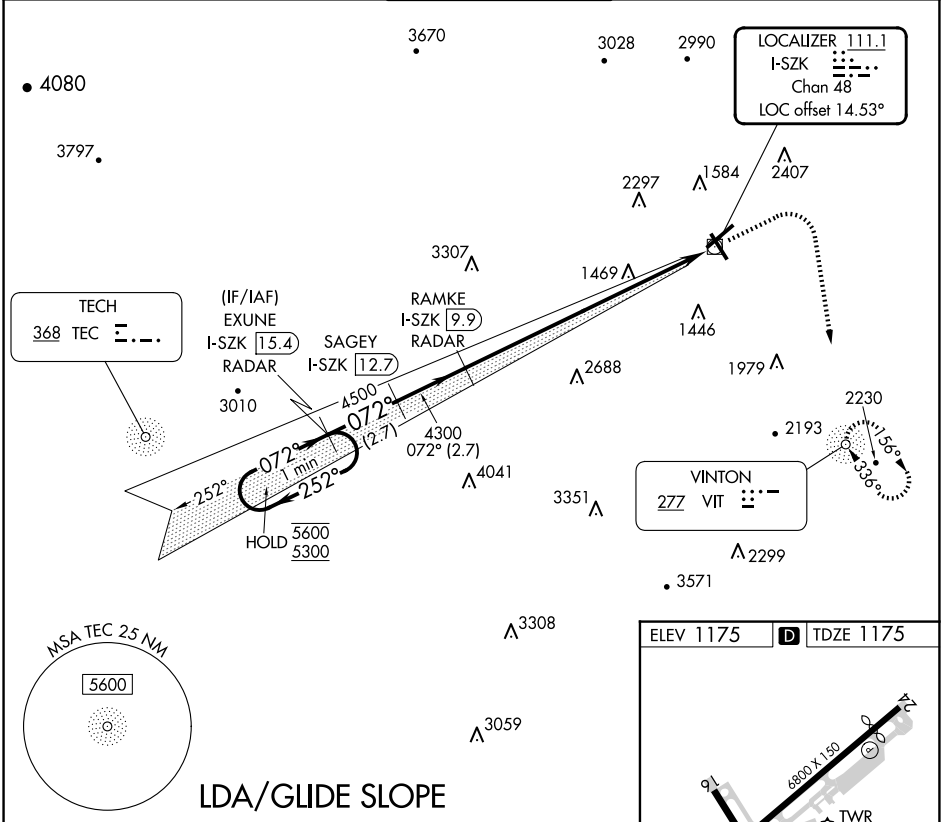
LOC/DME I-SZK <b>111.1</b> Chan <b>48</b>	APP CRS <b>072°</b>	Rwy Idg <b>6800</b> TDZE <b>1175</b> Apt Elev <b>1175</b>
---	------------------------	---

# LDA Z RWY 6

ROANOKE/BLACKSBURG RGNL (WOODRUM FLD) (R.O.A)

ADF required. RADAR required for procedure entry.		MALSR	MISSED APPROACH: Climb to 1800 then climbing right turn to 5000 direct VIT NDB and hold, continue climb-in-hold to 5000. Missed approach requires minimum climb of 350 feet per NM to 3600.	
-13°C For inop ALS, increase S-LDA/GS 6 visibility all Cats to 7/8 SM.		AS		

ATIS <b>132.375</b>	ROANOKE APP CON <b>126.9 339.8</b>	ROANOKE TOWER <b>118.3 257.8</b>	GND CON <b>121.9 257.8</b>	CLNC DEL <b>119.7</b>
------------------------	---------------------------------------	-------------------------------------	-------------------------------	--------------------------



NE-3, 20 FEB 2025 to 20 MAR 2025

NE-3, 20 FEB 2025 to 20 MAR 2025