

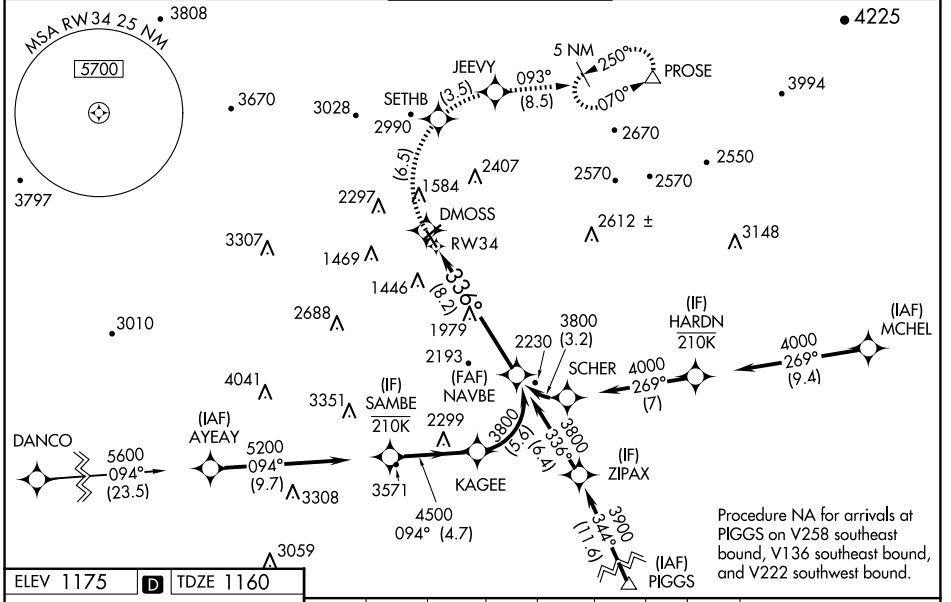
APP CRS	Rwy Idg	<b>5810</b>
<b>336°</b>	TDZE	<b>1160</b>
	Apt Elev	<b>1175</b>

# RNAV (RNP) Z RWY 34

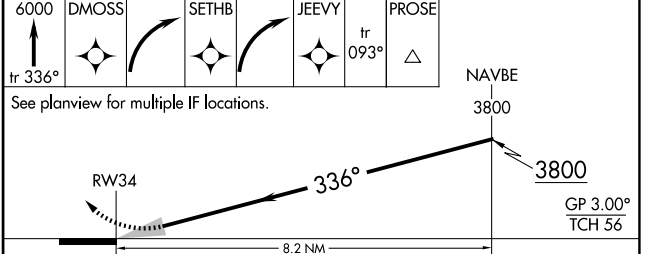
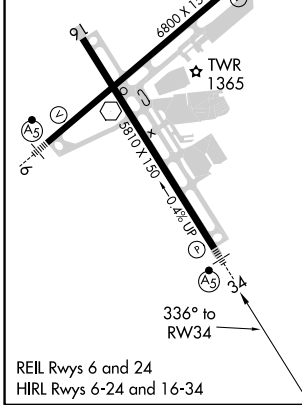
ROANOKE/BLACKSBURG RGNL (WOODRUM FLD) (R.O.A)

RNP AR APCH. RF required.	<b>MALSR</b> 	MISSED APPROACH: Climb to 6000 on track 336° to DMOSS, right turn to SETHB, right turn to JEEVY and on track 093° to PROSE and hold. * Missed approach requires minimum climb of 350 feet per NM to 4100. # Missed approach requires minimum climb of 415 feet per NM to 4100.
<p>Missed approach requires RNP less than 1.0. For inop ALS, increase RNP 0.30* all Cats visibility to 1<math>\frac{1}{2}</math> SM. Inop table does not apply to RNP 0.30. For uncompleted Baro-VNAV systems, procedure NA below -14°C or above 54°C.</p>		

ATIS <b>132.375</b>	ROANOKE APP CON <b>126.9 339.8</b>	ROANOKE TOWER <b>118.3 257.8</b>	GND CON <b>121.9 257.8</b>	CLNC DEL <b>119.7</b>
------------------------	---------------------------------------	-------------------------------------	-------------------------------	--------------------------



ELEV 1175	<b>D</b>	TDZE 1160
-----------	----------	-----------



CATEGORY	A	B	C	D
RNP 0.15 DA #		1495-1/2	335 (400-1/2)	
RNP 0.30 DA*		1646-1	486 (500-1)	
RNP 0.30 DA		2115-4	955 (1000-4)	

## AUTHORIZATION REQUIRED

ROANOKE/BLACKSBURG RGNL (WOODRUM FLD) (R.O.A)  
 37°20'N-79°59'W  
**RNAV (RNP) Z RWY 34**

NE-3, 20 FEB 2025 to 20 MAR 2025

NE-3, 20 FEB 2025 to 20 MAR 2025