

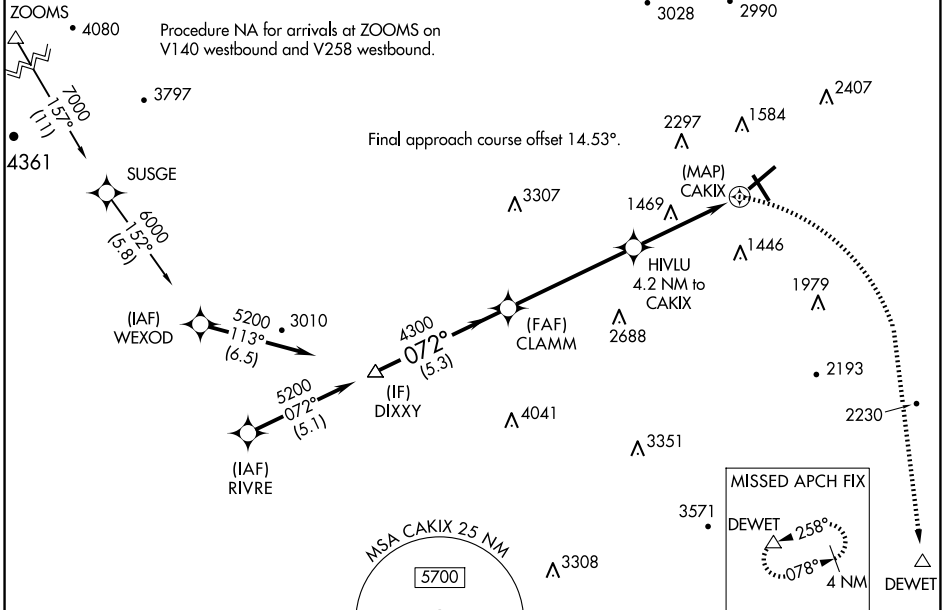
APP CRS	Rwy Idg	6800
072°	TDZE	1175
	Apt Elev	1175

RNAV (GPS) Y RWY 6

ROANOKE/BLACKSBURG RGNL (WOODRUM FLD) (R.O.A)

RNP APCH - GPS.		MALSR	MISSED APPROACH: Climbing right turn to 4000 direct DEWET and hold. ** Missed approach requires minimum climb of 276 feet per NM to 2700.
<p>Circling NA northwest of Rwy 6-24. For inop ALS, increase LNAV Cat C and D visibility to 2 1/2 SM.</p>			
-13°C			

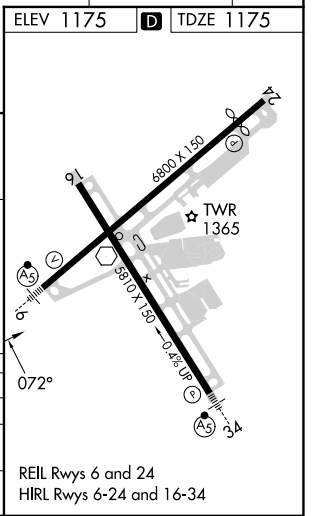
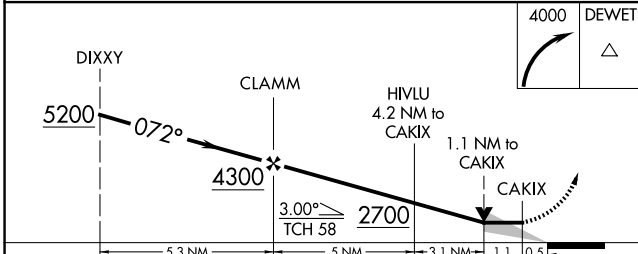
ATIS 132.375	ROANOKE APP CON 126.9 339.8	ROANOKE TOWER 118.3 257.8	GND CON 121.9 257.8	CLNC DEL 119.7
------------------------	---------------------------------------	-------------------------------------	-------------------------------	--------------------------



NE-3, 20 FEB 2025 to 20 MAR 2025

NE-3, 20 FEB 2025 to 20 MAR 2025

ELEV 1175	D	TDZE 1175
-----------	----------	-----------



CATEGORY	A	B	C	D
LNAV MDA**	1720-1/2	545 (600-1/2)	1720-1 1/8	545 (600-1 1/8)
LNAV MDA	1980-1/2 805 (900-1/2)	1980-3/4 805 (900-3/4)	1980-1 1/8	805 (900-1 1/8)
C CIRCLING	1980-1 805 (900-1)	1980-1 1/4 805 (900-1 1/4)	2460-3 1285 (1300-3)	2800-3 1625 (1700-3)

REIL Rwy 6 and 24
HIRL Rwy 6-24 and 16-34