

LOC I-MCU 110.7	APP CRS 044°	Rwy ldg TDZE Apt Elev	8001 535 559
---------------------------	------------------------	-----------------------------	---

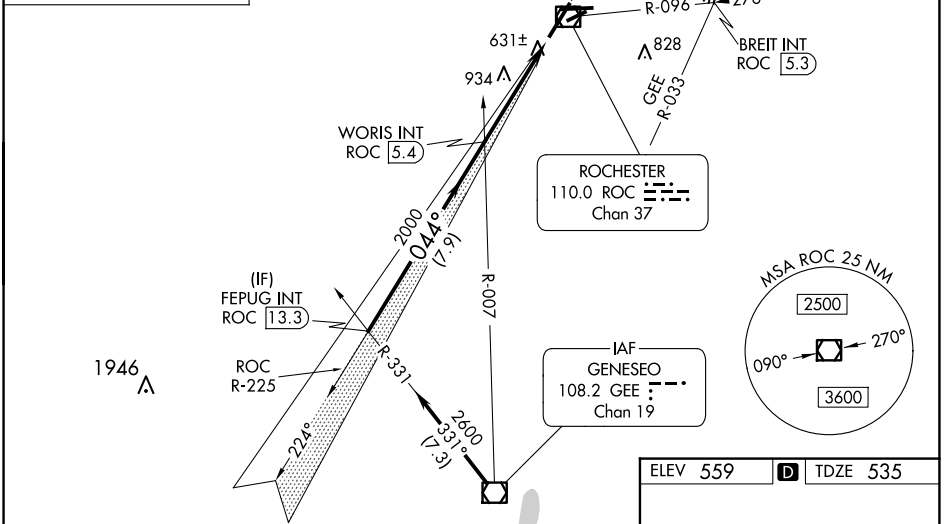
ILS RWY 4 (CAT II)

FREDERICK DOUGLASS/GREATER ROCHESTER INTL (ROC)

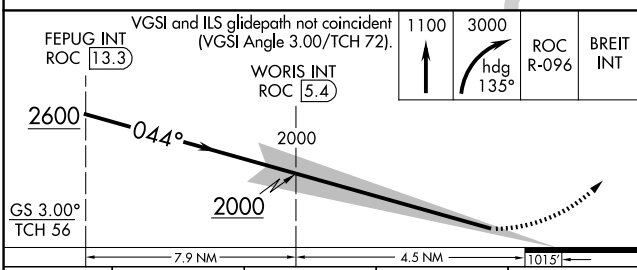
	MISSED APPROACH: Climb to 1100 then climbing right turn to 3000 on heading 135° and ROC VOR/DME R-096 to BREIT INT/ROC 5.3 DME and hold, continue climb-in-hold to 3000.			
	ATIS 124.825	ROCHESTER APP CON 119.55 269.6	ROCHESTER TOWER 118.3 254.3	GND CON 121.7

ALTERNATE MISSED APCH FIX

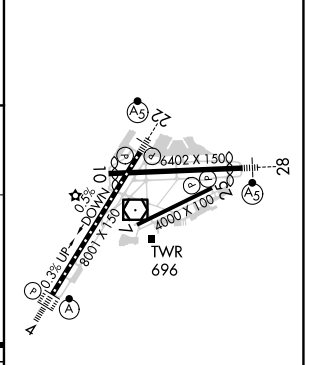
GENESECO
GEE
108.2
Chan 19



Procedure NA for arrivals at GEE VOR/DME on airway radials 287 CW 018.



ELEV 559	D TDZE 535
----------	-------------------



CATEGORY	A	B	C	D
S-ILS 4	RA 107/12 100 DA 635			

CATEGORY II ILS - SPECIAL AIRCREW & AIRCRAFT CERTIFICATION REQUIRED

TDZ/CL Rwy 4
REIL Rwy 7, 10 and 25
MIRL Rwy 7-25
HIRL Rwy 10-28 and 4-22

ILS RWY 4 (CAT II)

NE-2, 20 FEB 2025 to 20 MAR 2025

NE-2, 20 FEB 2025 to 20 MAR 2025