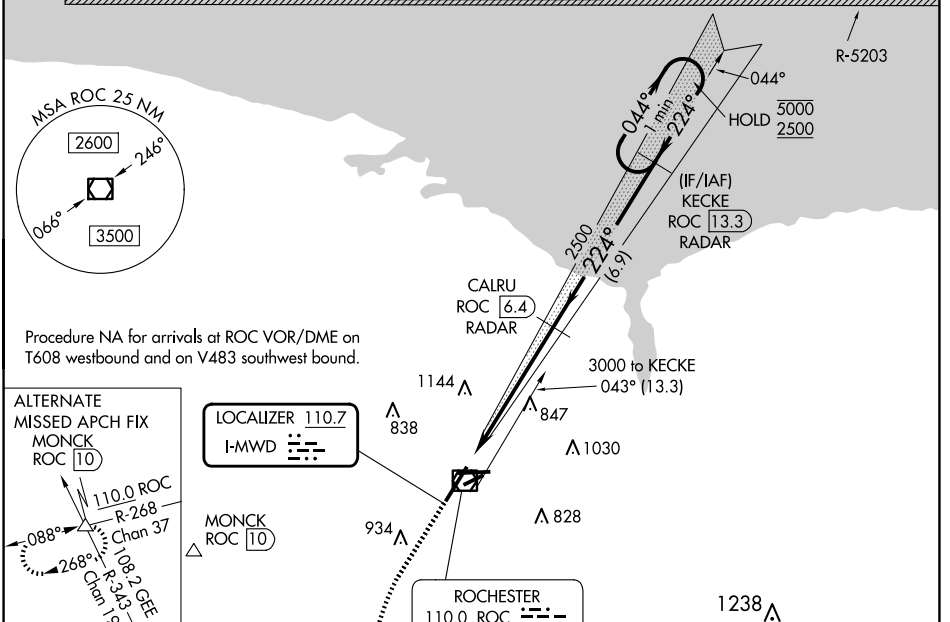


LOC I-MWD <b>110.7</b>	APP CRS <b>224°</b>	Rwy Idg <b>8001</b>
		TDZE <b>559</b>
		Apt Elev <b>559</b>

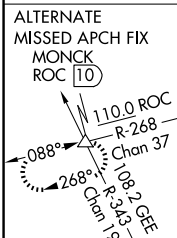
# ILS or LOC RWY 22

FREDERICK DOUGLASS/GREATER ROCHESTER INTL (ROC)

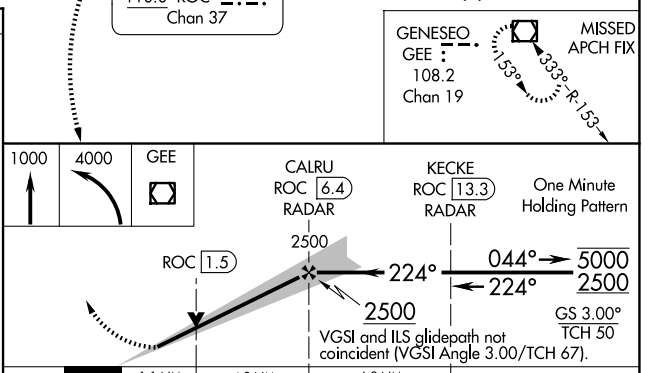
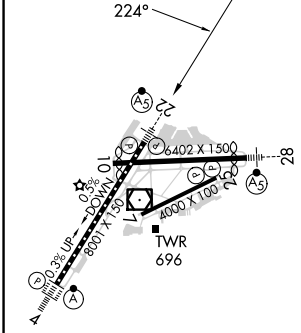
DME or RADAR required.		MALSR	MISSED APPROACH: Climb to 1000 then climbing left turn to 4000 direct GEE VOR/DME and hold.		
▼ When R-5203 active hold in lieu NA. DME from ROC VOR/DME. ▲ DME use requires simultaneous reception of I-MWD and ROC DME. * RVR 1800 authorized with use of FD or AP or HUD to DA.					
ATIS <b>124.825</b>	ROCHESTER APP CON <b>119.55 269.6</b>	ROCHESTER TOWER <b>118.3 254.3</b>	GND CON <b>121.7</b>	CLNC DEL <b>118.8 343.65</b>	



Procedure NA for arrivals at ROC VOR/DME on T608 westbound and on V483 southwest bound.



ELEV 559	<b>D</b>	TDZE 559
----------	----------	----------



TDZ/CL Rwy 4 REIL Rwys 7, 10 and 25 MIRL Rwy 7-25 HIRL Rwys 4-22 and 10-28	FAF to MAP 5.9 NM	1000 4000 GEE CALRU ROC 6.4 RADAR KECKE ROC 13.3 RADAR ROC 1.5 2500 2500 224° 044° 5000 2500 GS 3.00° TCH 50 VGSi and ILS glidepath not coincident (VGSi Angle 3.00/TCH 67).		
CATEGORY S-ILS 22 * S-LOC 22 CIRCLING	A 759/24 980/24 1060-1	B 200 (200-½) 421 (500-½) 501 (600-1)	C 980/40 1460-2¾ 901 (1000-2¾)	D 421 (500-¾) 1460-3 901 (1000-3)

NE-2, 20 FEB 2025 to 20 MAR 2025

NE-2, 20 FEB 2025 to 20 MAR 2025