

LOC I-MCU 110.7	APP CRS 044°	Rwy ldg TDZE Apt Elev	8001 535 559
---------------------------	------------------------	-----------------------------	---

ILS or LOC RWY 4

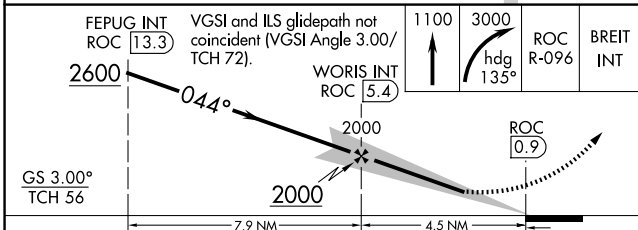
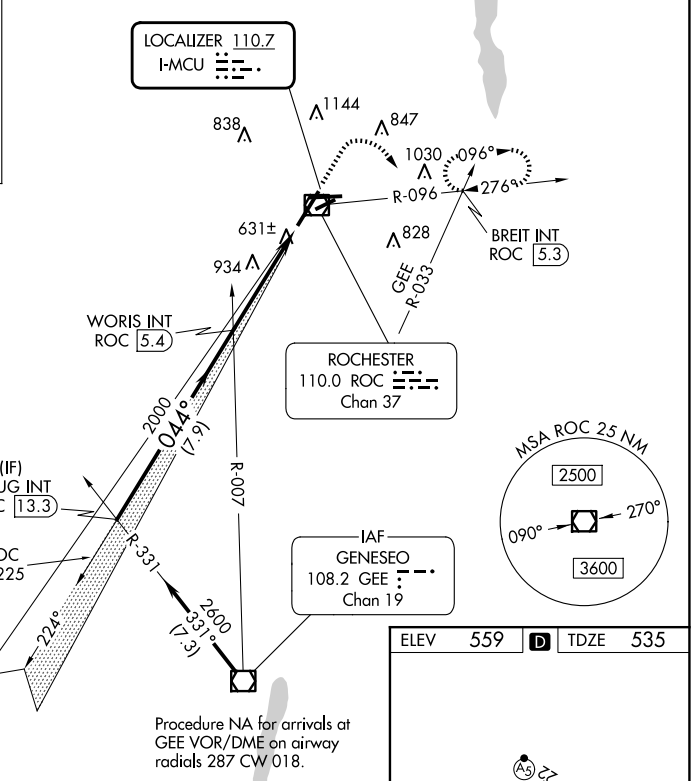
FREDERICK DOUGLASS/GREATER ROCHESTER INTL (ROC)

	MISSED APPROACH: Climb to 1100 then climbing right turn to 3000 on heading 135° and ROC VOR/DME R-096 to BREIT INT/ROC 5.3 DME and hold, continue climb-in-hold to 3000.			

ATIS 124.825	ROCHESTER APP CON 119.55 269.6	ROCHESTER TOWER 118.3 254.3	GND CON 121.7	CLNC DEL 118.8 343.65
------------------------	--	---------------------------------------	-------------------------	---------------------------------

ALTERNATE MISSED APCH FIX

GENESECO
GEE
108.2
Chan 19



ELEV	559	TDZE	535
TDZ/CL Rwy 4 REIL Rwys 7, 10 and 25 MIRL Rwy 7-25 HIRL Rwys 10-28 and 4-22			
FAF to MAP 4.5 NM			
Knots	60	90	120 150 180
Min:Sec	4:30	3:00	2:15 1:48 1:30

CATEGORY	A	B	C	D
S-ILS 4	735/18		200 (200-½)	
S-LOC 4	920/24	385 (400-½)	920/35	385 (400-¾)
CIRCLING	1060-1	501 (600-1)	1500-2¾ 941 (1000-2¾)	1500-3 941 (1000-3)

NE-2, 20 FEB 2025 to 20 MAR 2025

NE-2, 20 FEB 2025 to 20 MAR 2025