

VOR/DME ROC 110.0 Chan 37	APP CRS 052°	Rwy Idg 8001 TDZE 535 Apt Elev 559
---	------------------------	---

VOR RWY 4

FREDERICK DOUGLASS/GREATER ROCHESTER INTL (ROC)

⚠ For inop ALSF-2, increase S-4 Cat A visibility to RVR 5000, increase Cats C/D visibility to 2. Helicopter visibility reduction below RVR 4000 NA.

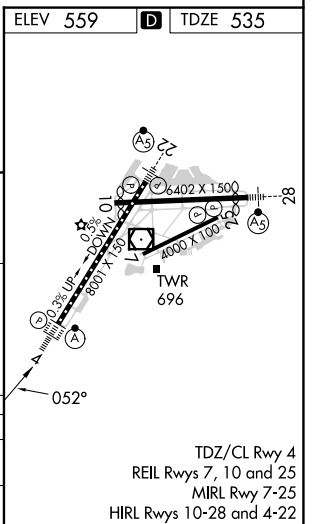
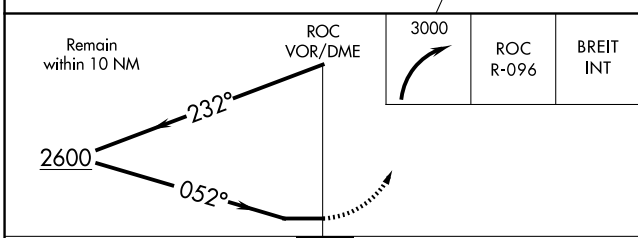
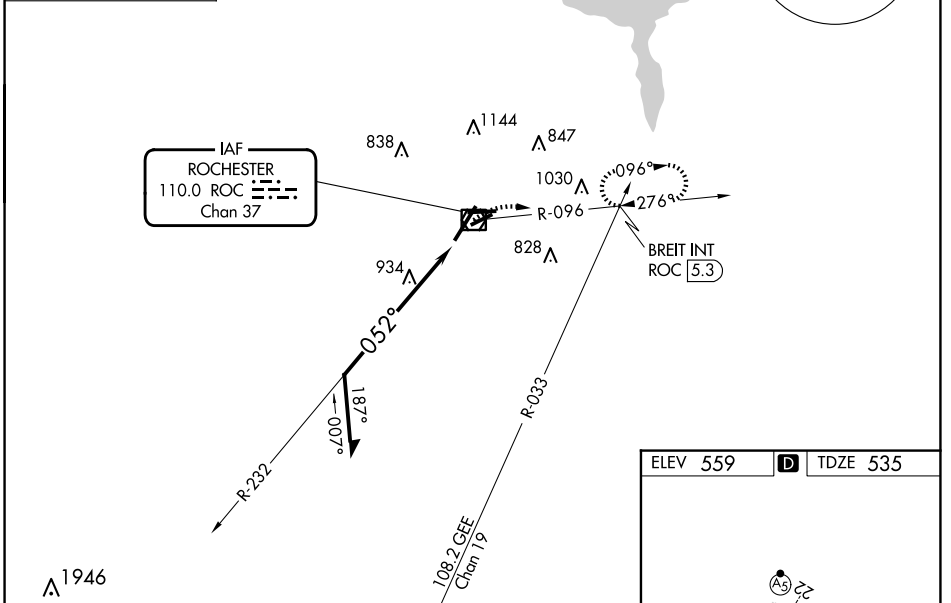
ALSF-2

MISSED APPROACH: Climbing right turn to 3000 on ROC VOR/DME R-096 to BREIT INT/ROC 5.3 DME and hold, continue climb-in-hold to 3000.

ATIS 124.825	ROCHESTER APP CON 119.55 269.6	ROCHESTER TOWER 118.3 254.3	GND CON 121.7	CLNC DEL 118.8 343.65
------------------------	--	---------------------------------------	-------------------------	---------------------------------

GENESEO
GEE
108.2
Chan 19

ALTERNATE
MISSED APCH FIX



CATEGORY	A	B	C	D
S-4	1280/40	745 (800-¾)	1280-1¾	745 (800-1¾)
C CIRCLING	1280-1 721 (800-1)	1280-1¼ 721 (800-1¼)	1500-2¾ 941 (1000-2¾)	1500-3 941 (1000-3)

TDZ/CL Rwy 4
REIL Rwys 7, 10 and 25
MIRL Rwy 7-25
HIRL Rwys 10-28 and 4-22

NE-2, 20 FEB 2025 to 20 MAR 2025

NE-2, 20 FEB 2025 to 20 MAR 2025