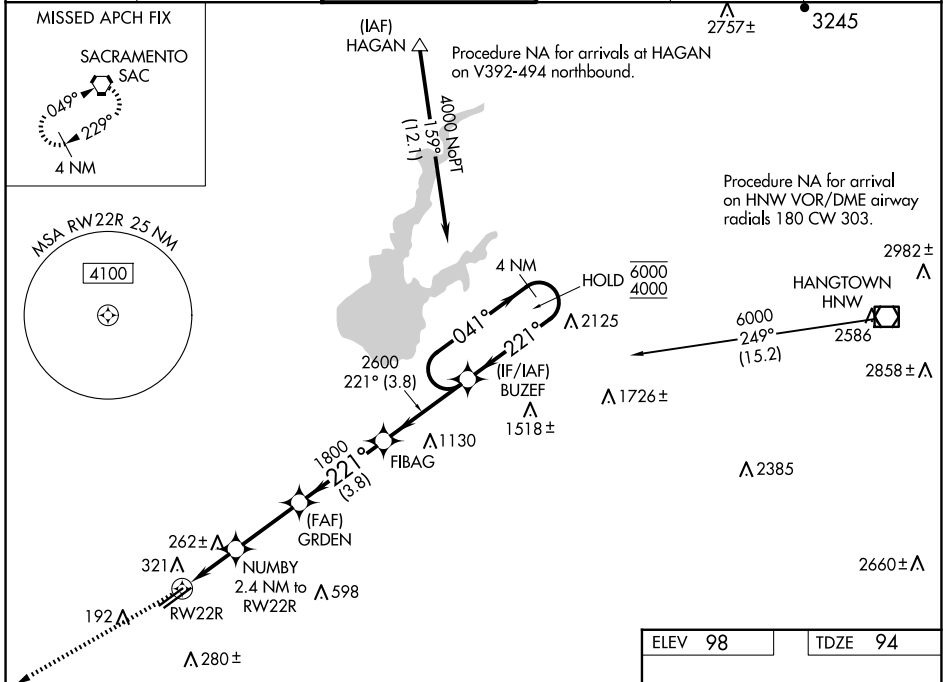


WAAS CH <b>42943</b> <b>W22B</b>	APP CRS <b>221°</b>	Rwy Idg TDZE Apt Elev	<b>6081</b> <b>94</b> <b>98</b>
--	------------------------	-----------------------------	---------------------------------------

# RNAV (GPS) RWY 22R

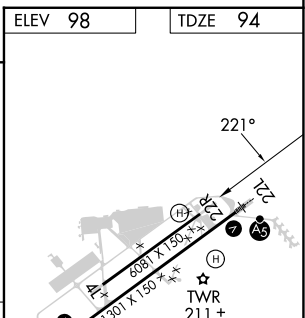
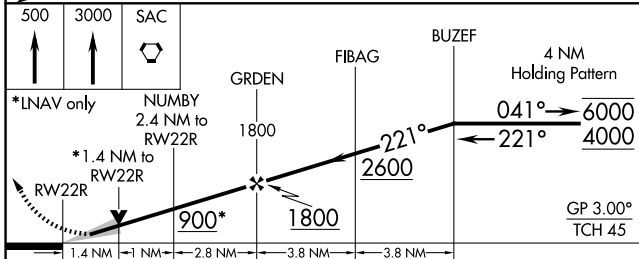
SACRAMENTO MATHER (MHR)

RNP APCH.		MISSED APPROACH: Climb to 500 then climb to 3000 direct SAC VORTAC and hold.			
<p><b>▽</b> Circling NA northwest of Rwy 4L-22R. For uncompensated Baro-VNAV systems, LNAV/VNAV NA below -15°C or above 54°C. Procedure NA at night.</p>					
ATIS <b>118.325</b>	NORCAL APP CON <b>127.4 317.5</b>	MATHER TOWER ★ <b>120.65 (CTAF) 282.25</b>	GND CON <b>121.85 307.9</b>	CLNC DEL <b>121.85 307.9</b>	UNICOM <b>122.95</b>



SW-2, 20 FEB 2025 to 20 MAR 2025

SW-2, 20 FEB 2025 to 20 MAR 2025



CATEGORY	A	B	C	D
LPV DA		294-3/4	200 (200-3/4)	
LNAV/VNAV DA		369-7/8	275 (300-7/8)	
LNAV MDA	580-1	486 (500-1)	580-13/8	486 (500-13/8)
<b>C</b> CIRCLING	580-1	482 (500-1)	600-11/2 502 (600-11/2)	800-21/4 702 (800-21/4)