

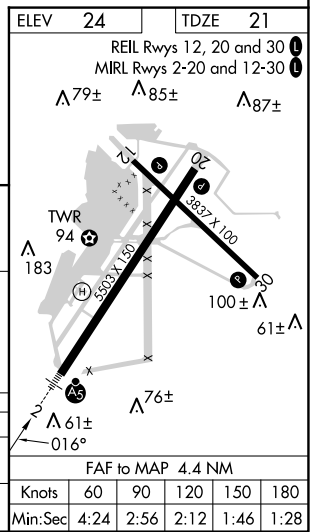
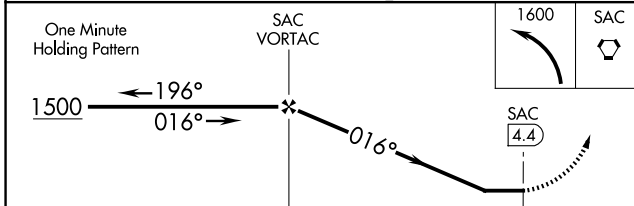
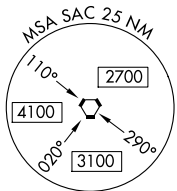
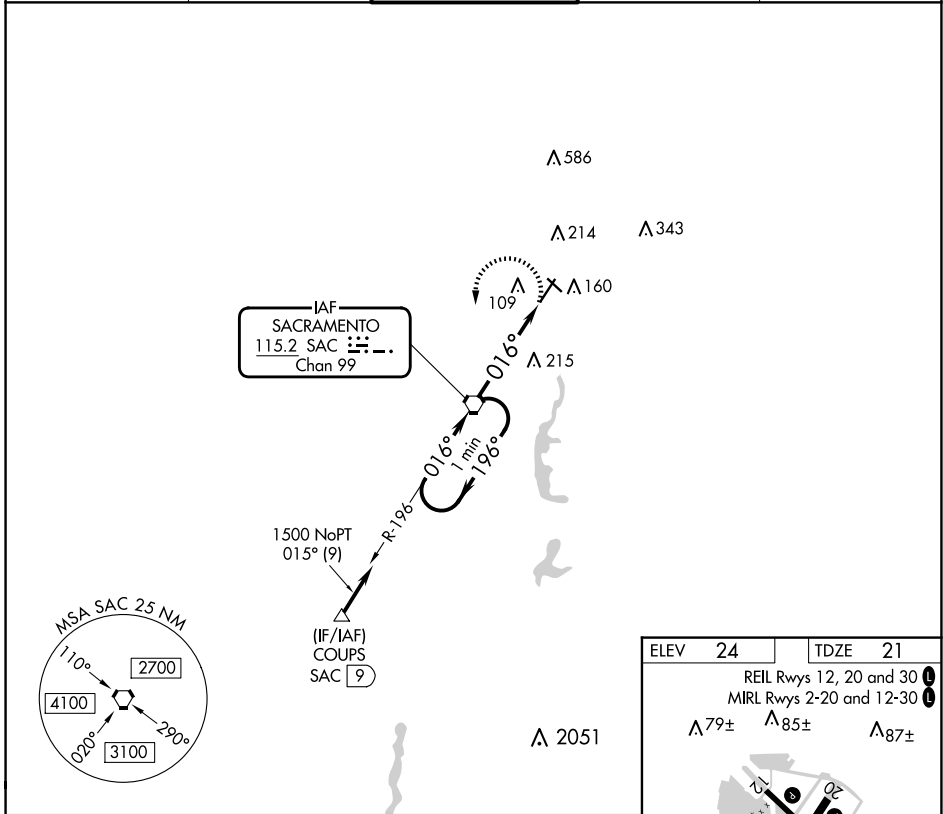
VORTAC SAC 115.2 Chan 99	APP CRS 016°	Rwy Idg 5503 TDZE 21 Apt Elev 24
--	------------------------	---

VOR RWY 2

SACRAMENTO EXEC (SAC)

<p>When local altimeter setting not received, use Sacramento Intl altimeter setting and increase all MDAs 40 feet and Circling Cat D visibility ¼ SM.</p>	MALSR 	MISSED APPROACH: Climbing left turn to 1600 direct SAC VORTAC and hold.

ATIS 125.5	NORCAL APP CON 125.25 257.9	EXEC TOWER* 119.5 (CTAF) 0 278.8	GND CON 125.0	UNICOM 122.95
----------------------	---------------------------------------	--	-------------------------	-------------------------



CATEGORY	A	B	C	D
S-2	520-1½	499 (500-½)	520-1	499 (500-1)
CIRCLING	520-1	496 (500-1)	560-1½ 536 (600-1½)	800-2½ 776 (800-2½)

SW-2, 20 FEB 2025 to 20 MAR 2025

SW-2, 20 FEB 2025 to 20 MAR 2025