

CHIEF NINE DEPARTURE

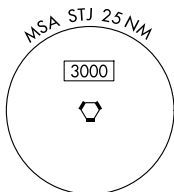
AL-359 (FAA)

ROSECRANS MEML (STJ)
ST. JOSEPH, MISSOURI

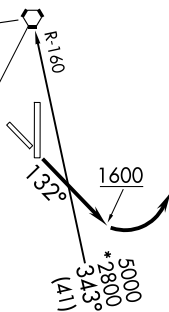
**TOP ALTITUDE:
10000**

RADAR required.

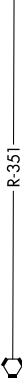
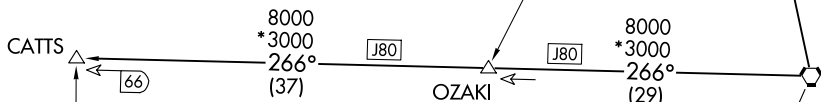
ST. JOSEPH DEP CON *
120.35 360.8
ATIS
125.05



ST. JOSEPH
115.5 STJ
Chan 102



KANSAS CITY
113.25 MCI
Chan 79(Y)



EMPORIA
112.8 EMP
Chan 75

TAKEOFF MINIMUMS

Rwys 13, 17, 35: Standard.

Rwy 31: 400-2¼ or standard with minimum climb of 340' per NM to 1300.

NOTE: Chart not to scale.

DEPARTURE ROUTE DESCRIPTION

TAKEOFF RUNWAY 13: Climb on heading 132° to 1600 before turning left, thence . . .
. . . climb on assigned heading for RADAR vectors to appropriate route. Maintain 10000 or
as assigned by ATC, expect filed altitude 10 minutes after departure.

TAKEOFF ALL OTHER RUNWAYS: Climb on assigned heading for RADAR vectors to
appropriate route. Maintain 10000 or as assigned by ATC, expect filed altitude 10 minutes
after departure.

CATTS TRANSITION (CHIEF9.CATTS): From over MCI VORTAC on MCI R-266 to CATTS.

ST. JOSEPH TRANSITION (CHIEF9.STJ): From over MCI VORTAC on MCI R-343 and STJ
R-160 to STJ VORTAC.

CHIEF NINE DEPARTURE