

VORTAC STJ 115.5 Chan 102	APP CRS 167°	Rwy Idg TDZE Apt Elev	8061 827 827
---	------------------------	-----------------------------	---

VOR or TACAN RWY 17

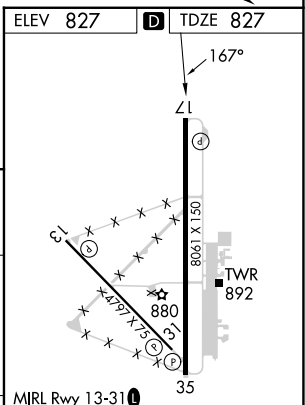
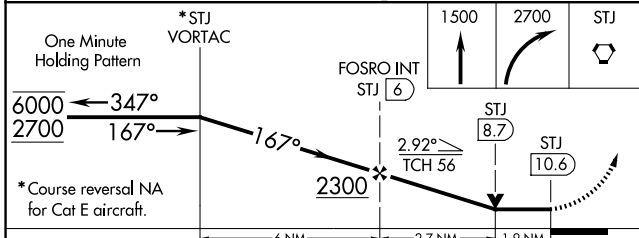
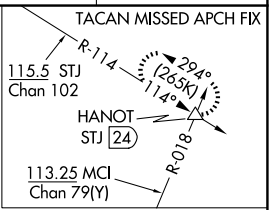
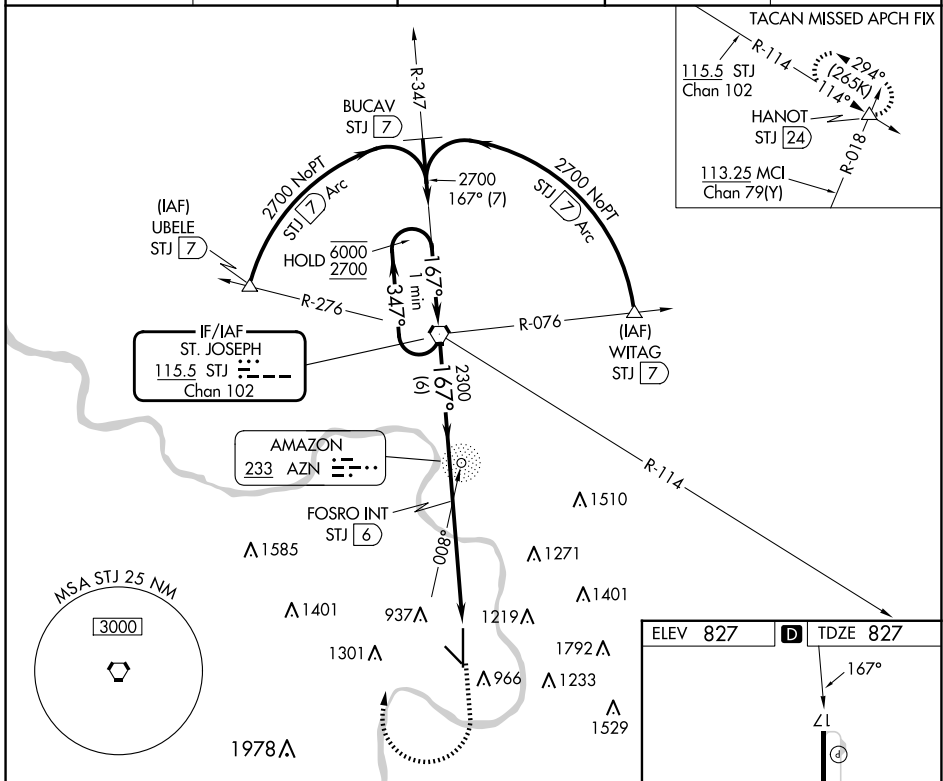
ROSECRANS MEML (STJ)

ADF or DME required.

MISSED APPROACH TO STJ VORTAC NA for Cat E aircraft.
ASR/PAR

MISSED APPROACH: Climb to 1500 then climbing right turn to 2700 direct STJ VORTAC and hold. (TACAN aircraft climb to 2300 then climbing left turn to 3100 direct HANOT INT/STJ 24 DME and hold NW, LT, 114° inbound, GPS required).

ATIS 125.05	ST. JOSEPH APP CON * 120.35 360.8	ST. JOSEPH TOWER * 126.9 (CTAF) 239.0	GND CON 121.9	UNICOM 122.95
-----------------------	---	---	-------------------------	-------------------------



CATEGORY	A	B	C	D	E
S-17	1500-1	673 (700-1)	1500-1 $\frac{7}{8}$	673 (700-1 $\frac{7}{8}$)	
CIRCLING	1500-1	673 (700-1)	1620-2 $\frac{1}{4}$ 793 (800-2 $\frac{1}{4}$)	1640-2 $\frac{3}{4}$ 813 (900-2 $\frac{3}{4}$)	1760-3 933 (1000-3)

ELEV 827	TDZE 827
1500	1500
800	800
880	880
892	892
35	35

MIRL Rwy 13-31	HIRL Rwy 17-35	REIL Rwys 17 and 35			
FAF to MAP 4.6 NM					
Knots	60	90	120	150	180
Min:Sec	4:36	3:04	2:18	1:50	1:32

NC-3, 20 FEB 2025 to 20 MAR 2025

NC-3, 20 FEB 2025 to 20 MAR 2025