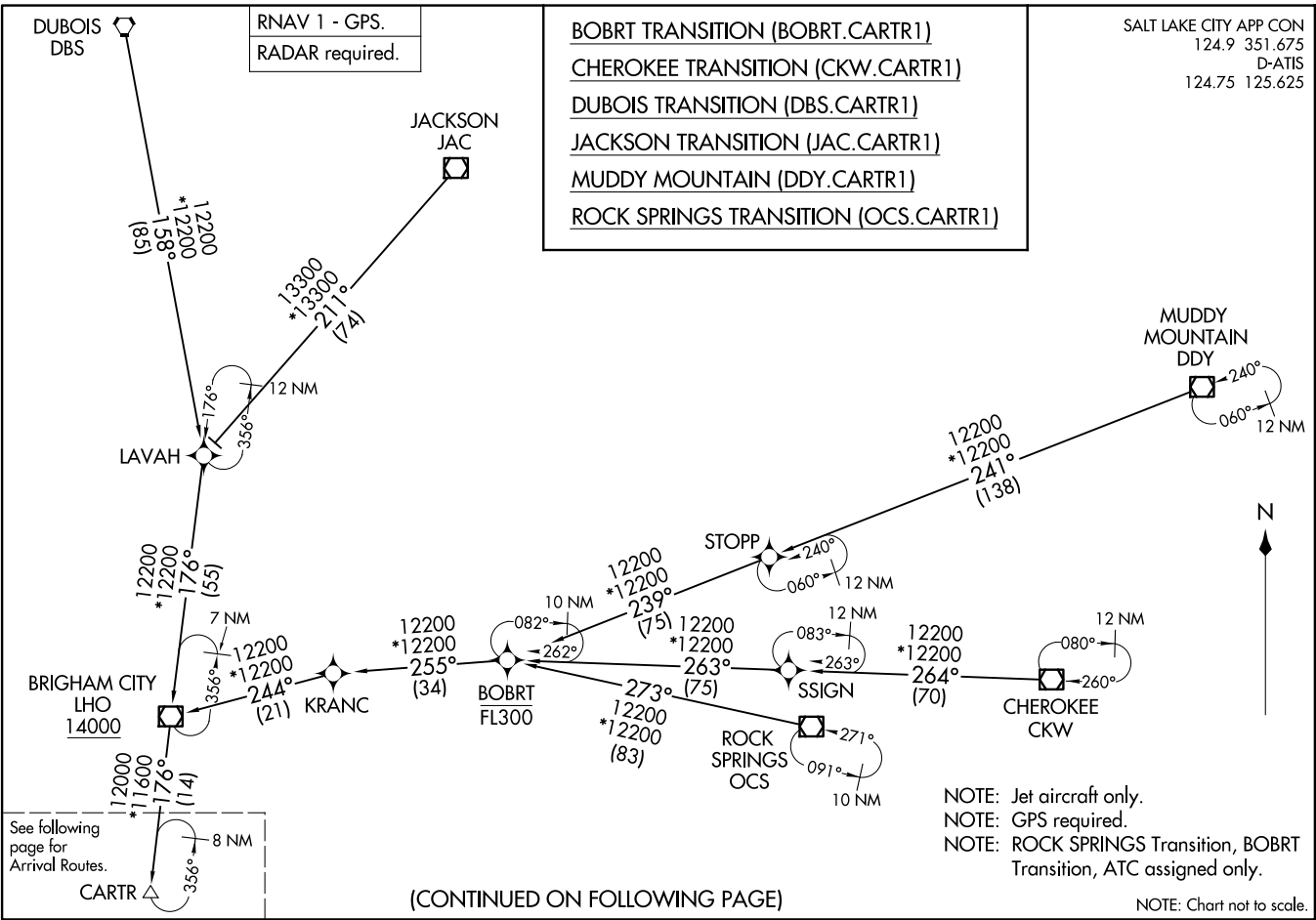


CARTR ONE ARRIVAL (RNAV) Transition Routes  
(CARTR.CARTR1) 20FEB25

SALT LAKE CITY, UTAH  
SALT LAKE CITY INTL (SLC)



(CONTINUED ON FOLLOWING PAGE)

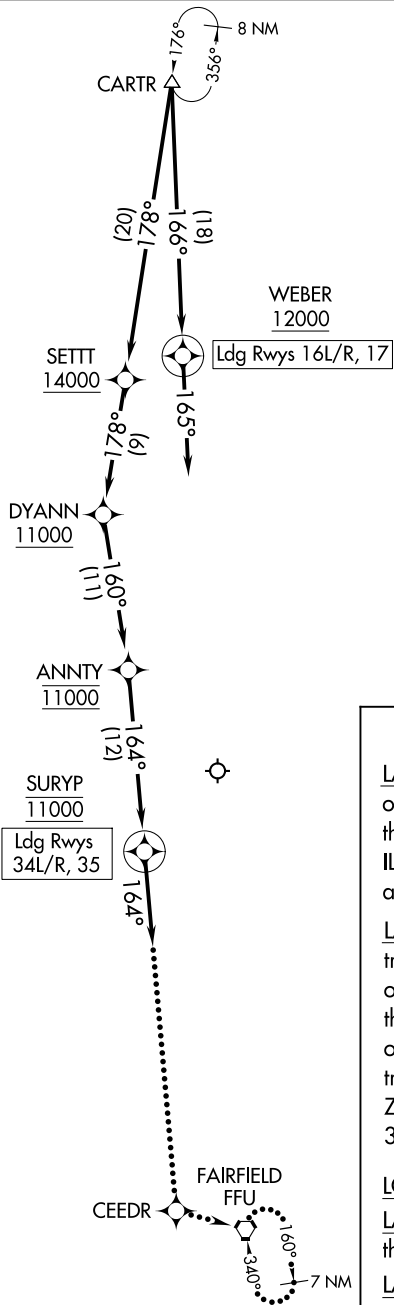
(CARTR.CARTR1) 25051  
CARTR ONE ARRIVAL (RNAV) Transition Routes

SALT LAKE CITY INTL (SLC)  
SALT LAKE CITY, UTAH

# CARTR ONE ARRIVAL (RNAV) Arrival Routes

RNAV 1 - GPS.  
RADAR required.

SALT LAKE CITY APP CON  
124.9 351.675  
D-ATIS  
124.75 125.625



- NOTE: Jet aircraft only.
- NOTE: GPS required.
- NOTE: ROCK SPRINGS Transition, BOBRT Transition, ATC assigned only.

NOTE: Chart not to scale.

### ARRIVAL ROUTE DESCRIPTION

**LANDING RUNWAYS 16L/R, 17:** From CARTR on track 166° to cross WEBER at or above 12000, then on track 165°. Expect RADAR vectors for ILS or RNAV approach to Rwy 16L/R or Rwy 17 approach.

**LANDING RUNWAYS 34L/R, 35:** From CARTR on track 178° to cross SETTT at or above 14000, then on track 178° to cross DYANN at or above 11000, then on track 160° to cross ANNTY at 11000, then on track 164° to cross SURYP at 11000, then on track 164°. Expect RADAR vectors for RNAV (RNP) Z RWY 34L approach or RADAR vectors to 34L/R, RWY 35 final approach course.

### LOST COMMUNICATIONS

**LANDING NORTH:** After SURYP proceed to CEEDR, then left turn to FFU VORTAC and hold at 11000.

**LANDING SOUTH:** After WEBER proceed on the ILS or RNAV RWY 16L approach.

SW-4, 20 FEB 2025 to 20 MAR 2025

SW-4, 20 FEB 2025 to 20 MAR 2025