

LOC/DME I-MOY <b>109.5</b> Chan <b>32</b>	APP CRS <b>164°</b>	Rwy Idg <b>12002</b> TDZE <b>4231</b> Apt Elev <b>4231</b>
---	------------------------	--

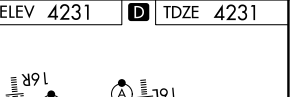
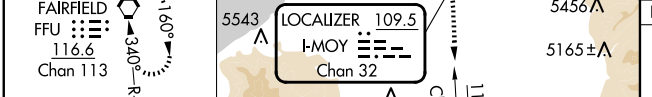
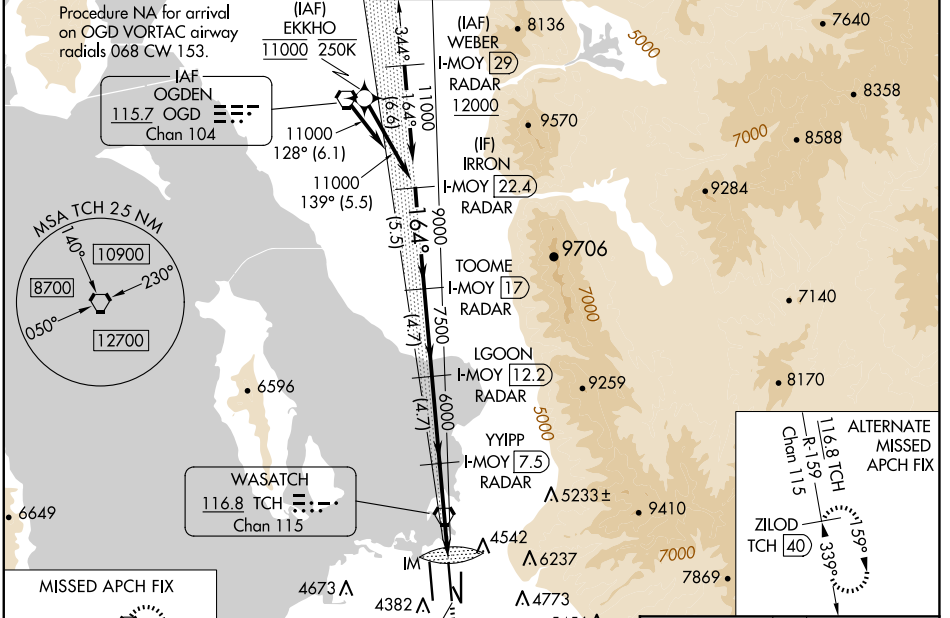
# ILS RWY 16L (CAT II & III)

SALT LAKE CITY INTL (SLC)

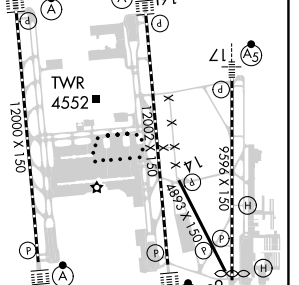
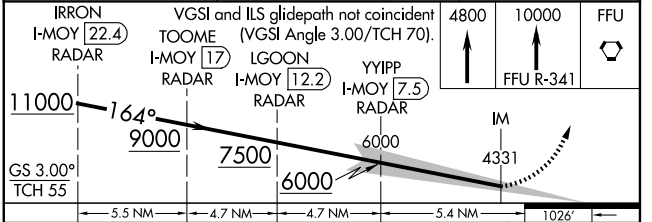
RNP APCH - GPS. From EKKHO.  
DME or RADAR required.  
Simultaneous approach authorized. CAT II: RVR 1000 authorized with specific OPSPEC, MSPEC, or LOA approval and use of autoland or HUD to touchdown.

ALSF-2  
MISSED APPROACH: Climb to 4800 then climb to 10000 on FFU VORTAC R-341 to FFU VORTAC and hold.

D-ATIS <b>124.75 125.625</b>	SALT LAKE CITY APP CON <b>125.7 284.6</b>	SALT LAKE CITY TOWER <b>119.05 257.8</b>	GND CON <b>123.775 348.6</b>	CLNC DEL <b>127.3 379.975</b>	CPDLC
---------------------------------	--	---	---------------------------------	----------------------------------	-------



IRRON I-MOY [22.4] RADAR	TOOME I-MOY [17] RADAR	LGOON I-MOY [12.2] RADAR	YIIPP I-MOY [7.5] RADAR	LOCALIZER 109.5 I-MOY Chan 32	IM	4800	10000	FFU
--------------------------	------------------------	--------------------------	-------------------------	-------------------------------	----	------	-------	-----



CATEGORY	A	B	C	D
S-ILS 16L	CAT II RA 109/12 100 DA 4331			
S-ILS 16L	CAT III RVR 03			

## CATEGORY II & III ILS - SPECIAL AIRCREW & AIRCRAFT CERTIFICATION REQUIRED

HIRL all Rwwys  
TDZ/CL Rwwys 16L, 16R, 17, 34L, 34R and 35

SW-4, 20 FEB 2025 to 20 MAR 2025

SW-4, 20 FEB 2025 to 20 MAR 2025