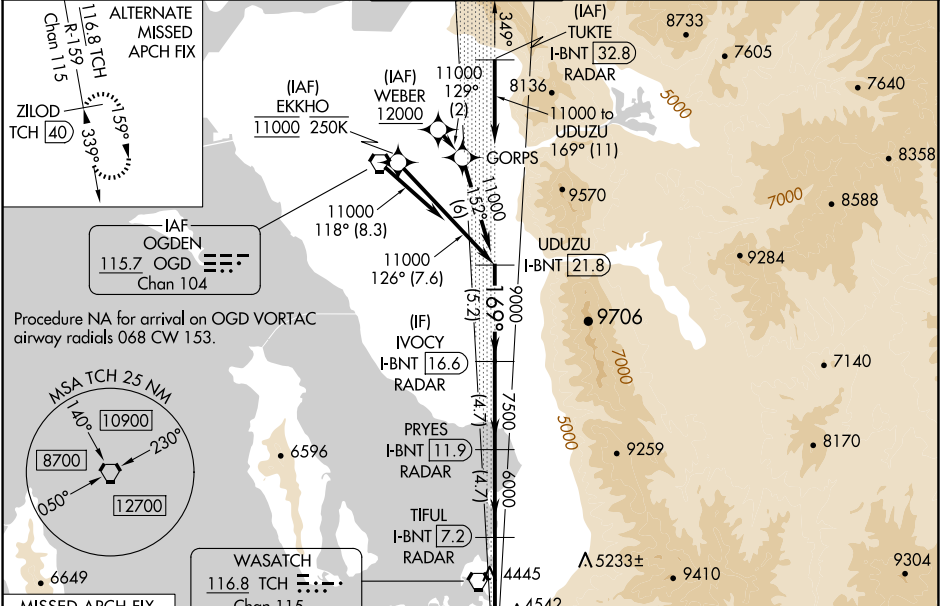


| | | | |
|--|------------------------|-----------------------------|---|
| LOC/DME I-BNT 111.5 Chan 52 | APP CRS 169° | Rwy Idg TDZE Apt Elev | 9596 4222 4231 |
|--|------------------------|-----------------------------|---|

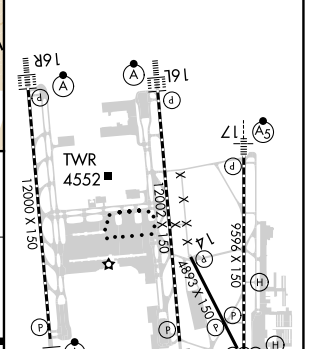
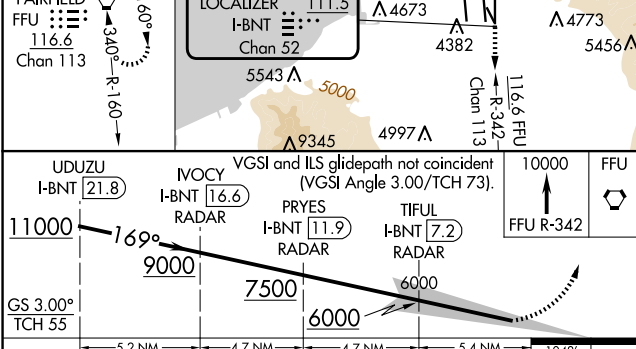
ILS RWY 17 (SA CAT I & II)

SALT LAKE CITY INTL (SLC)

| | | | | | |
|--|--|--|-------------------------------|--|-------|
| From WEBER, EKKHO: RNAV 1-GPS required. | | MALSR | | MISSED APPROACH: Climb to 10000 on FFU R-342 to FFU VORTAC and hold. | |
| DME or RADAR required. | | | | | |
| <p>Simultaneous approach authorized. SA CAT I: Requires specific OPSPEC, MSPEC, or LOA approval and use of HUD to DH. SA CAT II: Reduced lighting: Requires specific OPSPEC, MSPEC, or LOA approval and use of autoland or HUD to touchdown.</p> | | | | | |
| D-ATIS 124.75 125.625 | SALT LAKE CITY APP CON 125.7 284.6 | SALT LAKE CITY TOWER 118.3 257.8 | GND CON 121.9 348.6 | CLNC DEL 127.3 379.975 | CPDLC |



| | | |
|-----------|----------|-----------|
| ELEV 4231 | D | TDZE 4222 |
|-----------|----------|-----------|



| | | | | | |
|---|---------------------------------|---|------|-------|-----------|
| UDUZU I-BNT [21.8] | IVOCY I-BNT [16.6] RADAR | VGS1 and ILS glidepath not coincident (VGS1 Angle 3.00/TCH 73). | | 10000 | FFU |
| PRYES I-BNT [11.9] RADAR | TIFUL I-BNT [7.2] RADAR | 9000 | 7500 | 6000 | FFU R-342 |
| <p>GS 3.00° TCH 55</p> <p>5.2 NM 4.7 NM 4.7 NM 5.4 NM 5.4 NM 1048'</p> | | | | | |
| CATEGORY | A | B | C | D | |
| S-ILS 17 | SA CAT I RA 150/14 150 DA 4372 | | | | |
| S-ILS 17 | SA CAT II RA 100/12 100 DA 4322 | | | | |
| SA CATEGORY I & II ILS - SPECIAL AIRCREW & AIRCRAFT CERTIFICATION REQUIRED | | | | | |

HIRL all Rwy's
TDZ/CL Rwy's 16L, 16R, 17, 34L, 34R and 35

SW-4, 20 FEB 2025 to 20 MAR 2025

SW-4, 20 FEB 2025 to 20 MAR 2025