

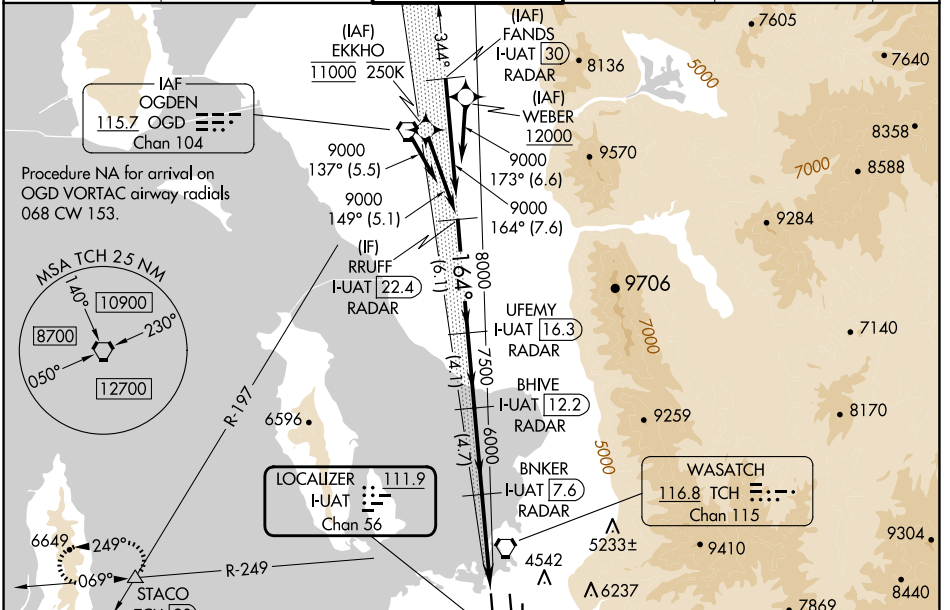
LOC/DME I-UAT <b>111.9</b> Chan <b>56</b>	APP CRS <b>164°</b>	Rwy ldg <b>12000</b> TDZE <b>4226</b> Apt Elev <b>4231</b>
---	------------------------	--

# ILS or LOC RWY 16R

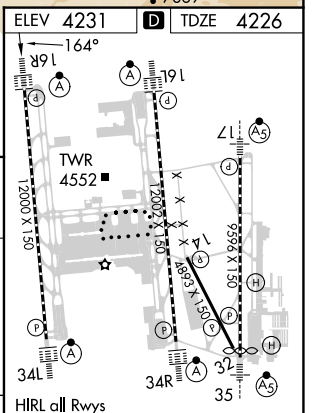
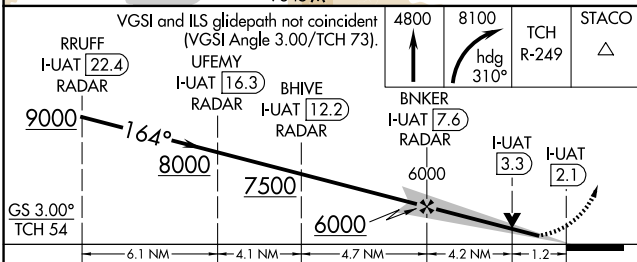
SALT LAKE CITY INTL (SLC)

RNP APCH - GPS. From EKKHO or WEBER.		ALSIF-2 	MISSED APPROACH: Climb to 4800 then climbing right turn to 8100 on heading 310° and on TCH VORTAC R-249 to STACO INT/TCH 20 DME and hold.
DME or RADAR required.			
<p>Simultaneous approach authorized. For inop ALS, increase S-LOC 16R Cat A and B visibilities to RVR 5500, and Cat C and D visibilities to 1 3/8 SM.</p>			

D-ATIS <b>124.75 125.625</b>	SALT LAKE CITY APP CON <b>125.7 284.6</b>	SALT LAKE CITY TOWER <b>132.65 336.4</b>	GND CON <b>123.775 348.6</b>	CLNC DEL <b>127.3 379.975</b>	CPDLC
---------------------------------	--	---	---------------------------------	----------------------------------	-------



ELEV 4231	<b>D</b> TDZE 4226
-----------	--------------------



CATEGORY	A	B	C	D	
S-ILS 16R	4426/18		200 (200-1/2)		
S-LOC 16R	4680/24	454 (500-1/2)	4680/45	454 (500-7/8)	
FAF to MAP 5.4 NM					
HIRL all Rwys TDZ/CL Rwys 16L, 16R, 17, 34L, 34R, and 35					
Knots					
	60	90	120	150	180
Min:Sec					
	5:24	3:36	2:42	2:10	1:48

SW-4, 20 FEB 2025 to 20 MAR 2025

SW-4, 20 FEB 2025 to 20 MAR 2025