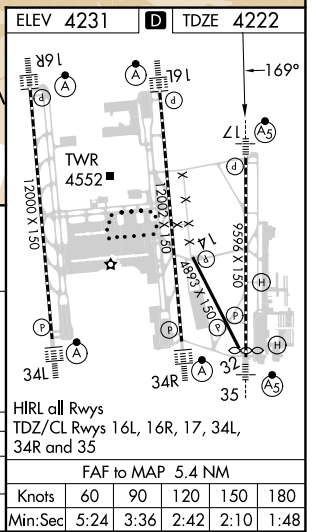
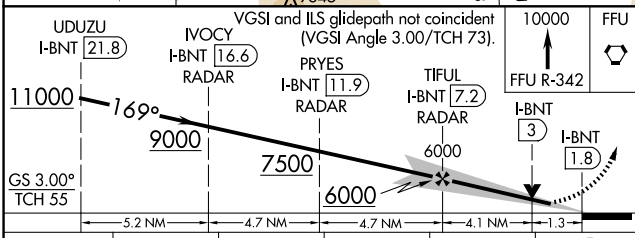
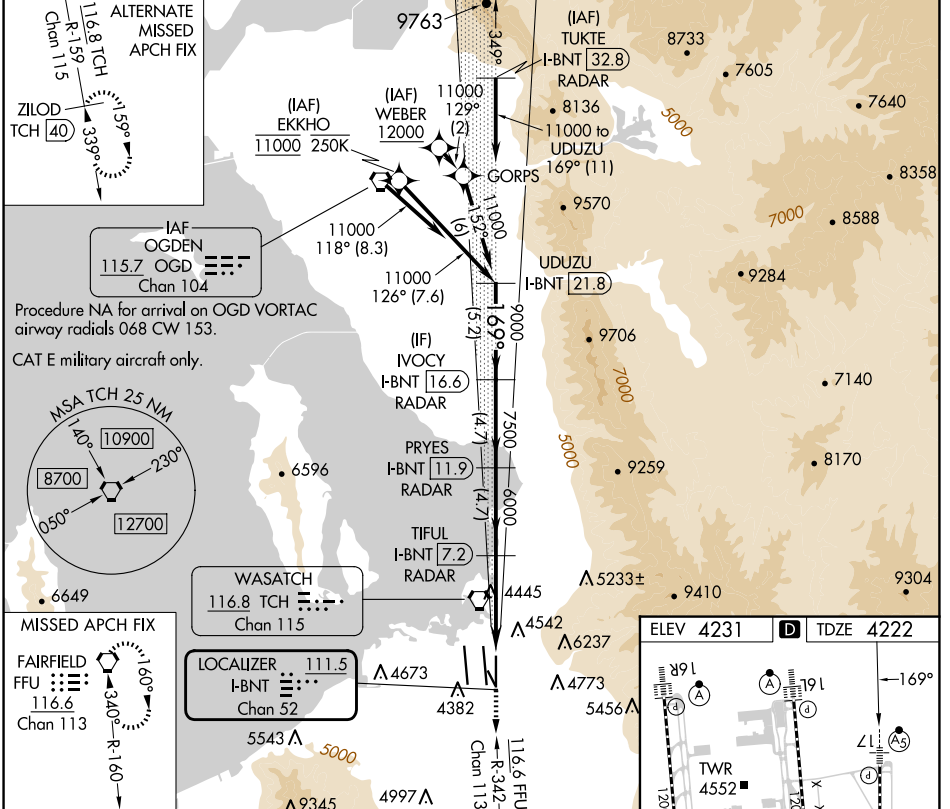


LOC/DME I-BNT 111.5 Chan 52	APP CRS 169°	Rwy Idg TDZE Apt Elev	9596 4222 4231
---	------------------------	-----------------------------	---

ILS or LOC RWY 17

SALT LAKE CITY INTL (SLC)

From WEBER, EKKHO: RNAV 1-GPS required.		MALSR 	MISSED APPROACH: Climb to 10000 on FFU R-342 to FFU VORTAC and hold.		
DME or RADAR required.					
<p>Simultaneous approach authorized. For inop ALS, increase S-ILS 17 Cat E visibility to RVR 4000, increase S-LOC 17 Cat C/D/E visibility to 1/2 SM.</p>					
D-ATIS 124.75 125.625	SALT LAKE CITY APP CON 125.7 284.6	SALT LAKE CITY TOWER 118.3 257.8	GND CON 121.9 348.6	CLNC DEL 127.3 379.975	CPDLC



CATEGORY	A	B	C	D	E
S-ILS 17	4422/18 200 (200-1/2)				
S-LOC 17	4700/24	478 (500-1/2)	4700/50 478 (500-1)		

SW-4, 20 FEB 2025 to 20 MAR 2025

SW-4, 20 FEB 2025 to 20 MAR 2025