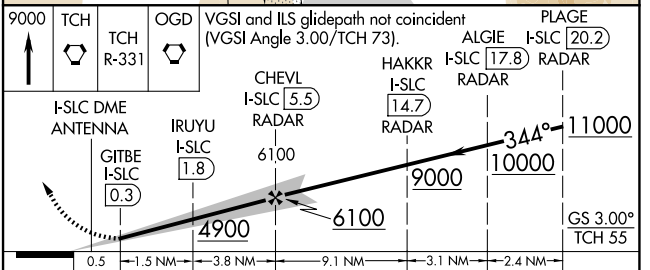
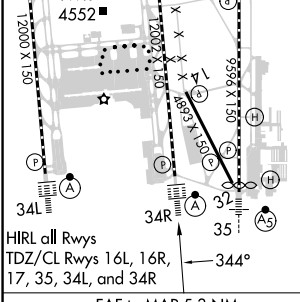
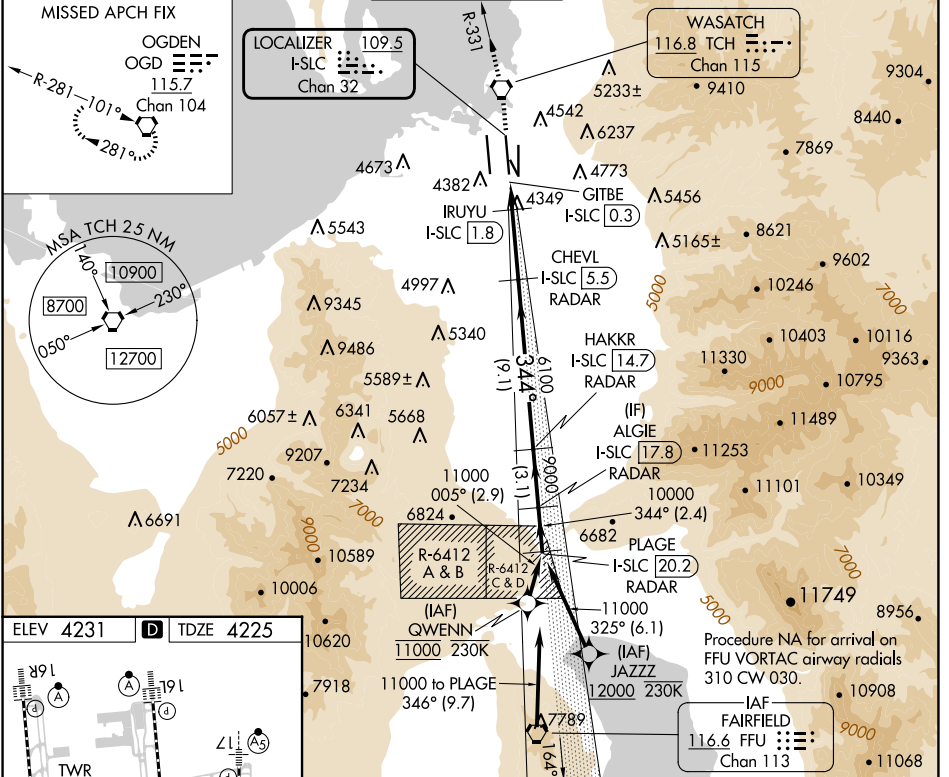


| | | |
|---|------------------------|--|
| LOC/DME I-LOC 109.5 Chan 32 | APP CRS 344° | Rwy Idg 12002 TDZE 4225 Apt Elev 4231 |
|---|------------------------|--|

ILS or LOC RWY 34R

SALT LAKE CITY INTL (SLC)

| | | | | | |
|---|--|---|--|----------------------------------|-------|
| RNP APCH - GPS. From QWENN or JAZZZ. | | ALSF-2 (A) | MISSED APPROACH: Climb to 9000 direct TCH VORTAC and on TCH VORTAC R-331 to OGD VORTAC and hold. | | |
| DME required for LOC only. DME or RADAR required. | | | | | |
| <p>Simultaneous approach authorized. For inop ALS, increase S-LOC 34R Cat C/D visibility to RVR 5500.</p> | | | | | |
| D-ATIS 124.75 125.625 | SALT LAKE CITY APP CON 125.7 284.6 | SALT LAKE CITY TOWER 119.05 257.8 | GND CON 123.775 348.6 | CLNC DEL 127.3 379.975 | CPDLC |



| | | | | |
|-----------|---------------------|-------------|---------|-------------|
| CATEGORY | A | B | C | D |
| S-ILS 34R | 4425/18 200 (200-½) | | | |
| S-LOC 34R | 4600/24 | 375 (400-½) | 4600/35 | 375 (400-¾) |

SW-4, 20 FEB 2025 to 20 MAR 2025

SW-4, 20 FEB 2025 to 20 MAR 2025