

(QWENN.QWENN6) 25051

QWENN SIX ARRIVAL (RNAV)

AL-365 (FAA)

SALT LAKE CITY INTL (SLC)
SALT LAKE CITY, UTAH

ARRIVAL ROUTE DESCRIPTION

BRYCE CANYON TRANSITION (BCE.QWENN6)
MILFORD TRANSITION (MLF.QWENN6)

From QWENN on track 344°. Expect RADAR vectors for ILS or RNAV approach to Rwy 34L/R, 35 or RADAR vectors to final approach course.

LOST COMMUNICATIONS

After QWENN, proceed on the ILS or LOC RWY 34L approach.

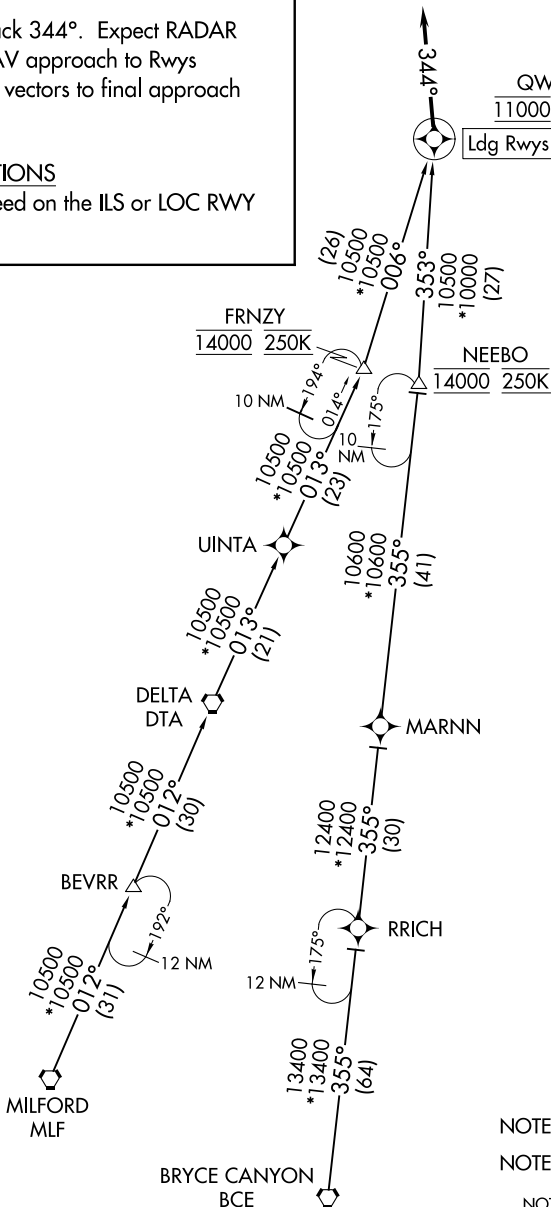
SALT LAKE CITY APP CON
128.6 322.3
D-ATIS
124.75 125.625

QWENN
11000 230K

Ldg Rwy 34L/R, 35

RNAV 1 - GPS.

RADAR required.



NOTE: Jet aircraft only.

NOTE: GPS required.

NOTE: Chart not to scale.

QWENN SIX ARRIVAL (RNAV)

(QWENN.QWENN6) 20FEB25

SALT LAKE CITY, UTAH
SALT LAKE CITY INTL (SLC)

SW-4, 20 FEB 2025 to 20 MAR 2025

SW-4, 20 FEB 2025 to 20 MAR 2025