

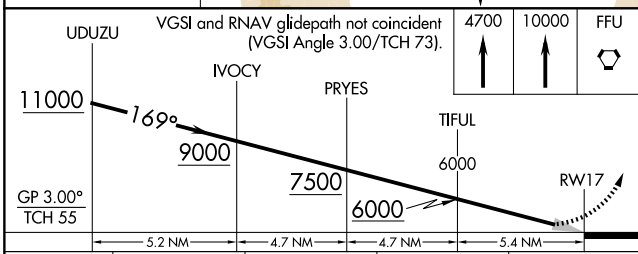
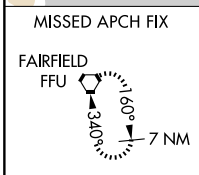
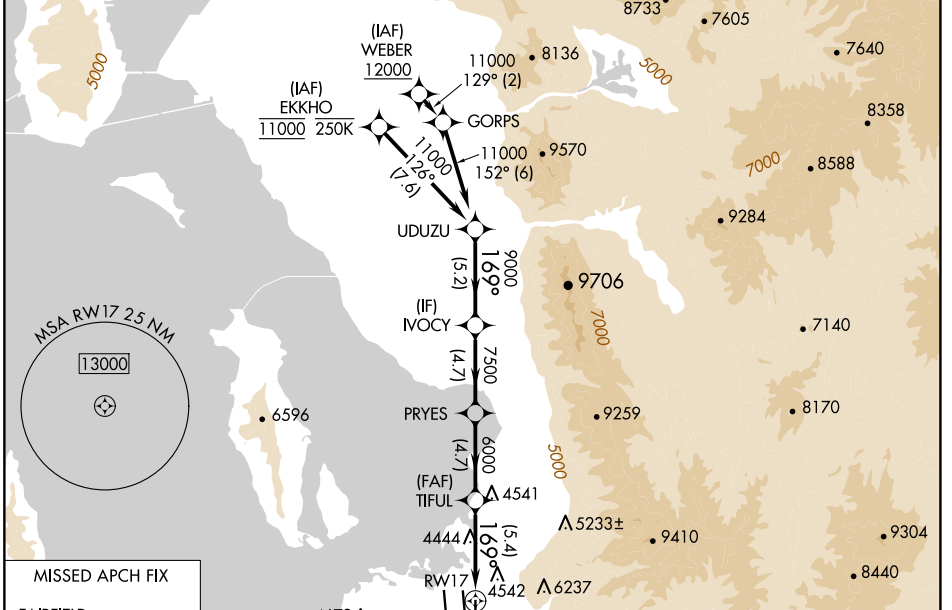
APP CRS	Rwy Idg	9596
169°	TDZE	4222
	Apt Elev	4231

RNAV (RNP) Z RWY 17

SALT LAKE CITY INTL (SLC)

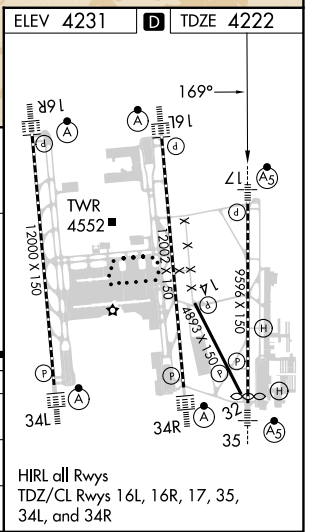
RNP AR APCH - GPS.		MALSR	MISSED APPROACH: Climb to 4700 then climb to 10000 direct FFU VORTAC and hold.
<p>▼ For uncompassated Baro-VNAV systems, procedure NA below -10°C or above 54°C. Simultaneous approach authorized. For inop ALS, increase RNP 0.20 all Cats visibility to RVR 4000 and RNP 0.30 all Cats visibility to RVR 5500.</p>			

D-ATIS	SALT LAKE CITY APP CON	SALT LAKE CITY TOWER	GND CON	CLNC DEL	CPDLC
124.75 125.625	125.7 284.6	118.3 257.8	121.9 348.6	127.3 379.975	



CATEGORY	A	B	C	D
RNP 0.20 DA		4472/24	250 (300-½)	
RNP 0.30 DA		4564/30	342 (400-¾)	

AUTHORIZATION REQUIRED



HIRL all Rwys
TDZ/CL Rwys 16L, 16R, 17, 35,
34L, and 34R

SW-4, 20 FEB 2025 to 20 MAR 2025

SW-4, 20 FEB 2025 to 20 MAR 2025