

RNAV (RNP) Z RWY 34R

SALT LAKE CITY INTL (SLC)

APP CRS	Rwy Idg	12002
344°	TDZE	4225
	Apt Elev	4231

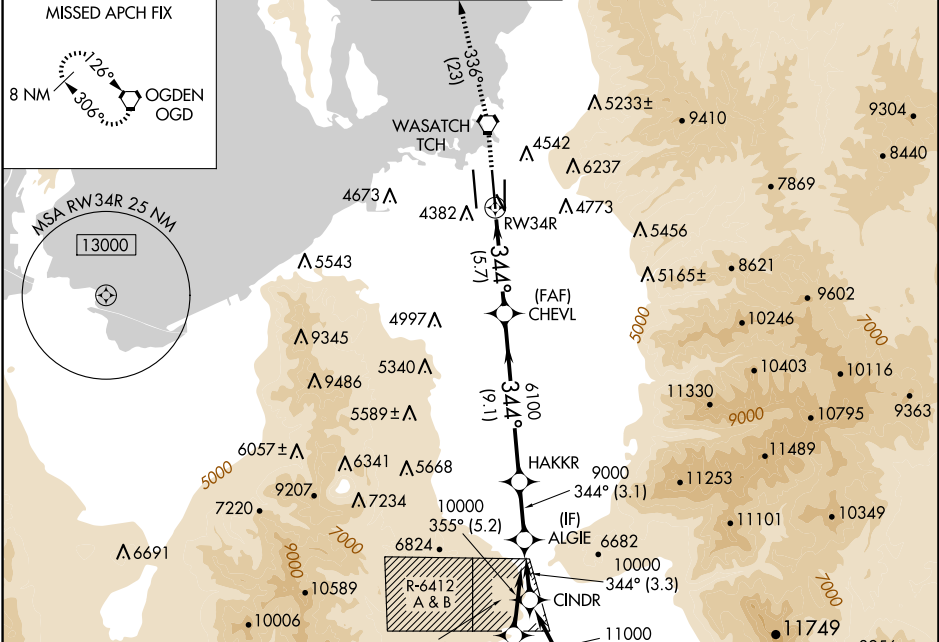
RNP AR APCH - GPS. Authorization required.

▼ For uncompensated Baro-VNAV systems, procedure NA below -10°C or above 54°C. Simultaneous approach authorized.

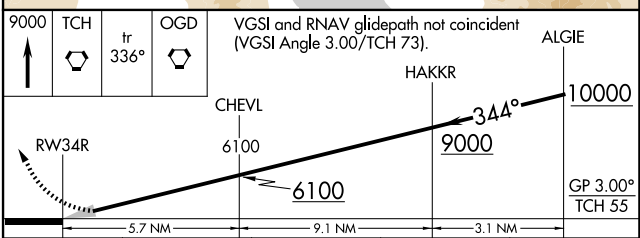
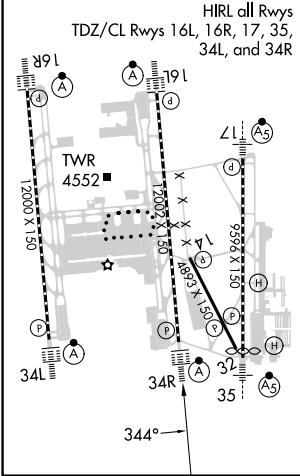
ALSIF-2

MISSED APPROACH: Climb to 9000 direct TCH VORTAC and on track 336° to OGD VORTAC and hold.

D-ATIS	SALT LAKE CITY APP CON	SALT LAKE CITY TOWER	GND CON	CLNC DEL	CPDLC
124.75 125.625	125.7 284.6	119.05 257.8	123.775 348.6	127.3 379.975	



ELEV 4231 **D** TDZE 4225



CATEGORY	A	B	C	D
RNP 0.10 DA		4546/26	321 (400-1/2)	
RNP 0.30 DA		4609/35	384 (400-3/8)	

AUTHORIZATION REQUIRED

SW-4, 20 FEB 2025 to 20 MAR 2025

SW-4, 20 FEB 2025 to 20 MAR 2025